

*Clean Rivers Project  
Northeast Boundary Tunnel*

*Tunnel Forum Meeting*

*First Street Pumping Station, T Street NW, Florida Avenue NW, R Street NW Construction Sites*

***GREETINGS NEIGHBORS!***

October 15, 2020

# Welcome to the Virtual Tunnel Forum Meeting!



## Participation Tips:

- Online meetings are subject to your bandwidth limitations. If your connection to the meeting should freeze, please exit and reenter the meeting to refresh your connection.
- Participants may opt to turn on or off your video.
- All participant lines are muted to minimize disruptions.
- The Questions and Answers period will be held at the end of the presentation. [Please hold your questions until the Q&A portion of the meeting.](#)
- During the Question and Answer period of the meeting, we will acknowledge questions from participants who are online and on phone.
- **ONLINE PARTICIPANTS:** send your questions to the Host by using the Chat mode. You may also click on “Participants” to raise your hand for a question.
- **PHONE PARTICIPANTS:** press \*9 to alert us that you want to ask a question. We will unmute you when it’s your turn to ask a question.

# Agenda

---

- **September 10th Flooding Event**
- **Responses to March 2020 Tunnel Forum Concerns**
- **Construction Site Updates**
  - [First Street NW Pumping Station](#)
  - [T Street NW](#)
  - [Florida Avenue NW](#)
  - [R Street NW](#)
- **LeDroit Park & Bryant Street Alternative Parking Areas**
- **NEBT Claims Process**
- **Main Street Contact Information**

# We Want Everyone To Be Safe

## Alan Etter



The city's response to Covid-19 focuses on social distancing and staying home. To see more on the city's response, go to [coronavirus.dc.gov](https://coronavirus.dc.gov). For coronavirus testing in DC, call **1-855-363-0333**.

NEBT has taken the following actions to ensure the safety of employees:

- Employees in the tunnel must undergo temperature screening at the start of their shift
- Masks and other personal protective equipment must be worn by all employees on site
- Employees maintain at least six feet of distance when possible whether on above or below ground operations
- All shared tools & equipment are regularly sanitized
- Please let us know how to make our engagement with you better

### Outreach During Quarantine

Our team continues to engage the community through virtual meetings, email, door-to-door newsletter distribution (when necessary) and can be reached by email at [dccleanrivers@dcwater.com](mailto:dccleanrivers@dcwater.com) and by calling the NEBT Hotline at **800-988-6151**.

# September 10, 2020 – Flooding

## Steven Bealby



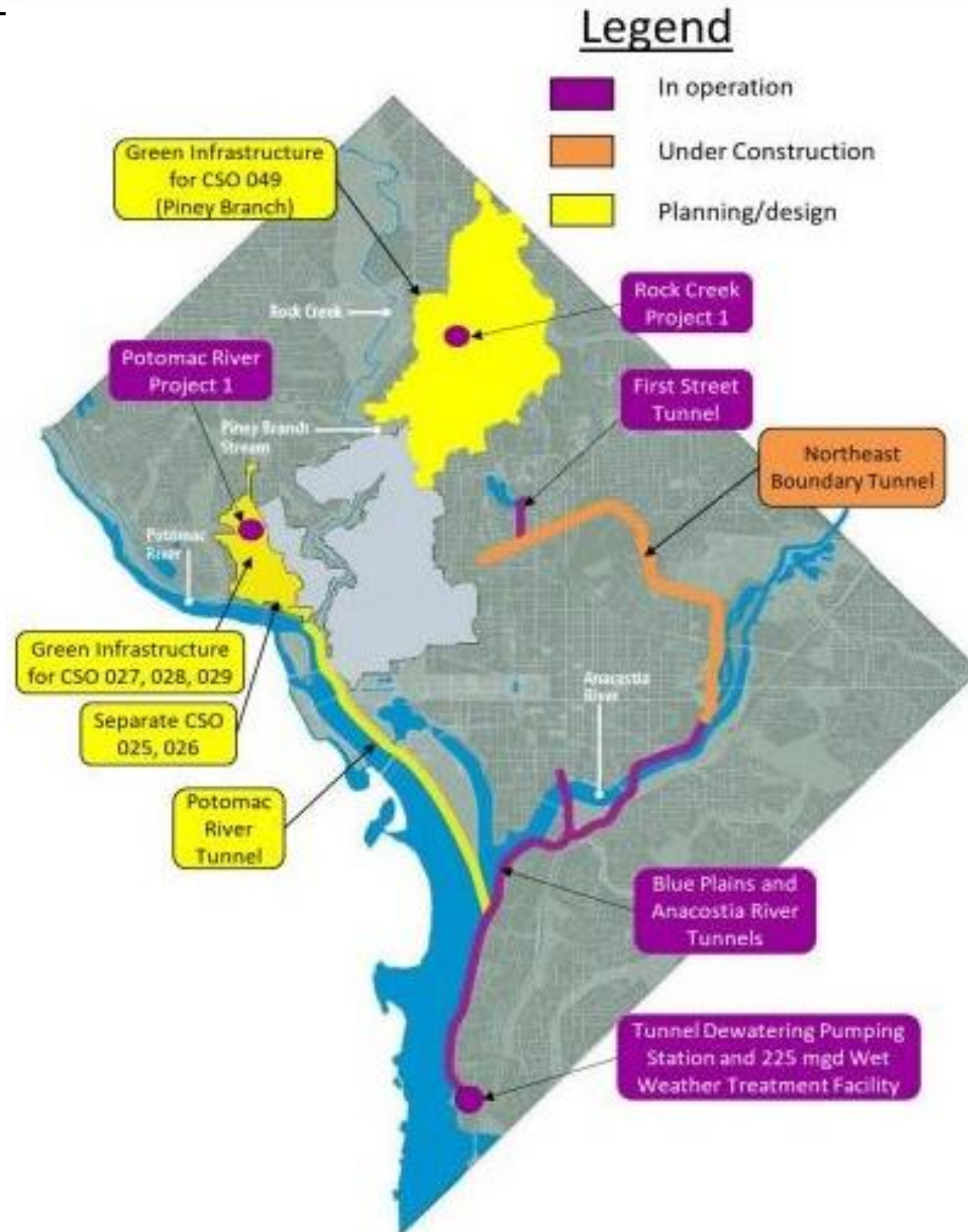
View of flooding on Rhode Island Avenue NW.

# What Happened?



- Sewer infrastructure and deep tunnels functioned as designed.
- No underlying issue with construction or malfunction or error that contributed to flooding.
- Caused primarily by historically high rain fall – more than 2.2 inches in 75 minutes; flooding reported across the region.
- Record rainfall for September 10 recorded at Reagan National Airport.
- Short window from weather prediction to the storm event.

# Performance of the First Street Tunnel



## FST Overview

- Temporary pumping station at the end of the tunnel
- Will be connected to the Northeast Boundary Tunnel in 2023
- The FST will operate by gravity once connected to the Northeast Boundary Tunnel

September 10, 2020

The First Street Tunnel (FST) filled to capacity and overflowed as designed

- Tunnel filled to capacity in about 35 minutes – full by about 2:10 pm
- 9 million gallons of storage placed in operation

# Performance of the Anacostia River Tunnel System

---

September 10, 2020

- Tunnel filled to capacity in about 35 minutes – full by about 2:20 pm
- Tunnel was emptied to Wet Weather Treatment Facility as designed

Anacostia River Tunnel from Blue Plains to RFK Stadium placed in operation on March 20, 2018

- 7 miles of 23' diameter tunnel
- Capacity of 124 million gallons

**195**

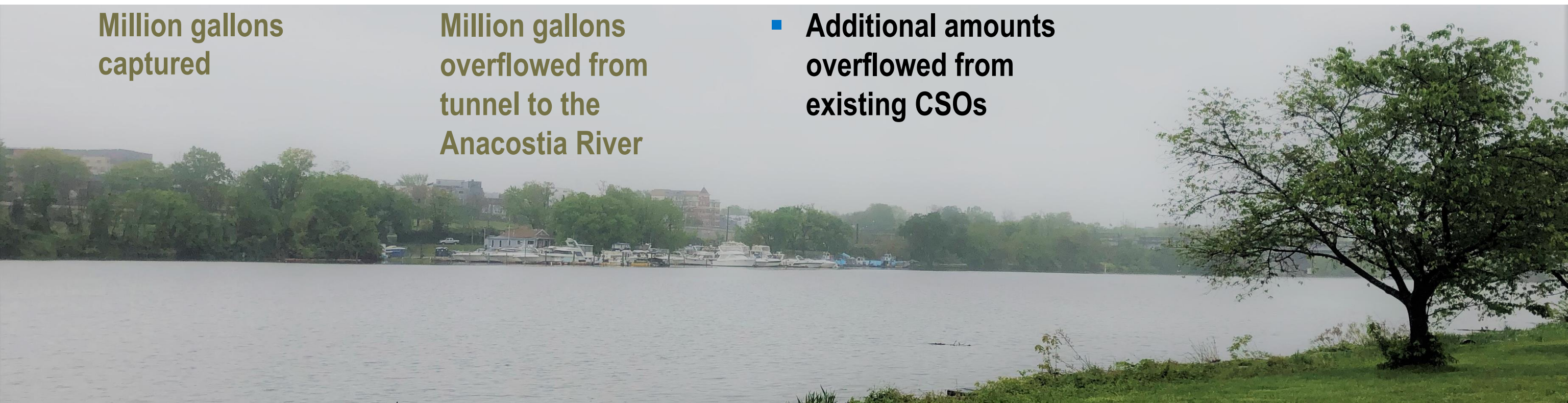
Million gallons captured

**108**

Million gallons overflowed from tunnel to the Anacostia River

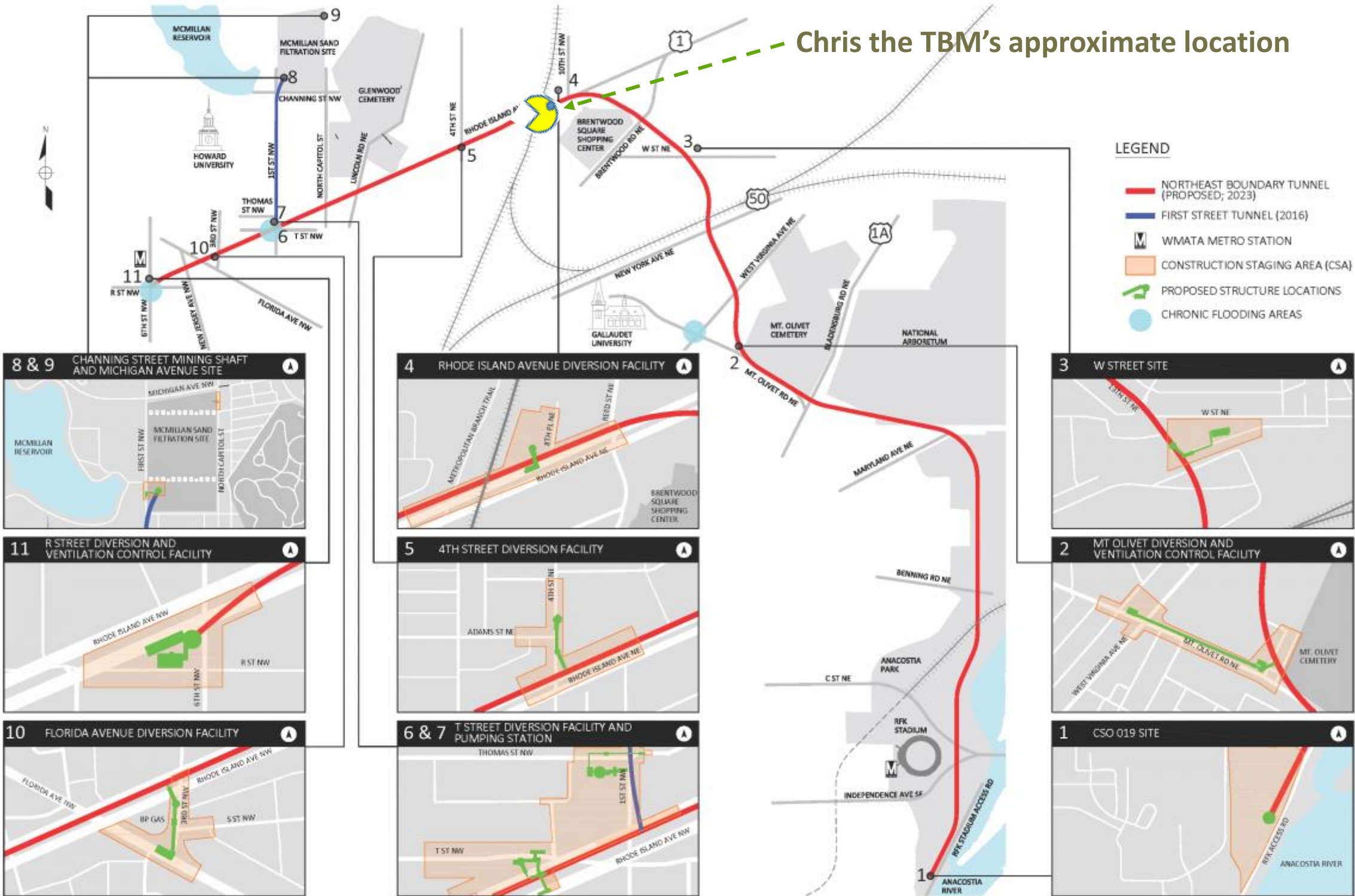
\* CSO = Combined Sewer Overflows. Learn more at [dcwater.com/css](https://dcwater.com/css).

- Additional amounts overflowed from existing CSOs





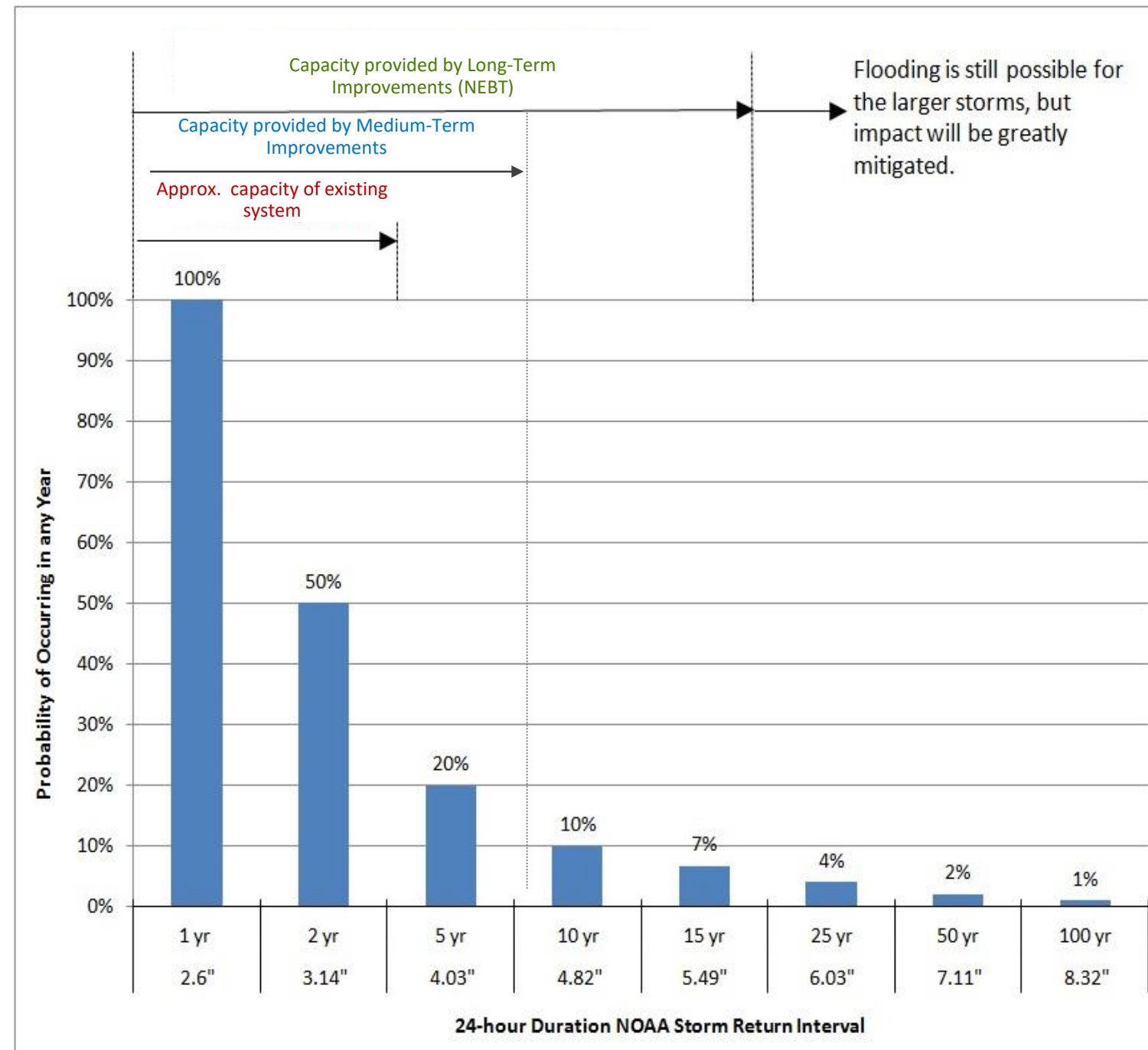
# Northeast Boundary Tunnel Project Overview



# Northeast Boundary Tunnel Project

## Benefits

- Reduce the frequency and magnitude of flooding
- Reduce the discharge of untreated wastewater into the Anacostia River and improve water quality
- Reduce risks to human health



- Significantly mitigate the frequency, magnitude and duration of sewer flooding and basement backups in the Northeast Boundary drainage area
- Control combined sewer overflow (CSO) discharges to the Anacostia River, significantly improving water quality
- Prevent deterioration of historic resources from water damage caused by flooding

# DC Water Flood Assistance Programs

---

## Clean-up Relief Program

DC Water has contracted with two companies to help with dewatering, cleaning and sanitizing. The per property limit is \$5,000 and DC Water will pay the company directly.

- Call **Service Master** at 703-212-7000 (24/7) or **ServePro** at 703-448-8444 (24/7).
- Or call the **Emergency Clean Up Program** hotline at 202-428-5244 (9:00 a.m. to 5:00 p.m., Monday through Friday).

## Backwater Valve Rebate Program

DC Water will pay up to \$6,000 for the installation of a backwater valve which helps prevent wastewater from entering your home during back-ups caused by storms.

- Visit [dcwater.com/backwatervalves](https://dcwater.com/backwatervalves) for more information about eligibility and the application process.

## Flood Claims Process

If you have homeowner's insurance, you should file a claim with your insurer. Uninsured or underinsured residents may seek reimbursement for cleaning expenses by filing a claim with DC Water.

- For information regarding the claims process, visit [dcwater.com/claims](https://dcwater.com/claims) or call 202-787-2050.

# Responses to May 21<sup>st</sup> Tunnel Forum Concerns

Andy Galli

CONCERN	RESPONSE
Workers are parking in residential spots.	Staff have been informed not to use on-street residential parking spaces.
The Bike lane at RST requires thicker lines distinguishing it from car lane. The bike lane should be wider.	Repainted lines and widened the bike lane.
There is a grate in RIA that became loose during median removal and is very noisy when traffic runs over it.	Repair has been completed to grate.
Street detour and other stand-alone signs are falling down.	Righted signs and increased and added new sandbags to bases.
Garbage and other litter are being thrown over new project jersey barrier at FLA	Make sure NEBT work and other areas are free of garbage and litter.
Bulldog Trucking subcontractors and deliveries are not using sanctioned travel routes.	Bulldog trucking sub-contractors and deliveries have improved route communication with the drivers and use tracking technology on their trucks.
Workers are gathering in close groups along the sidewalk and on corners of the work-sites.	Workers have been informed of safe social distancing behaviors in public spaces including wearing masks.

# Construction Site Updates

Andrea Sesenna and Matt Wolniak



# First Street Pumping Station Construction Site

## Work Overview



### Current Activity: Jet Grout Coring

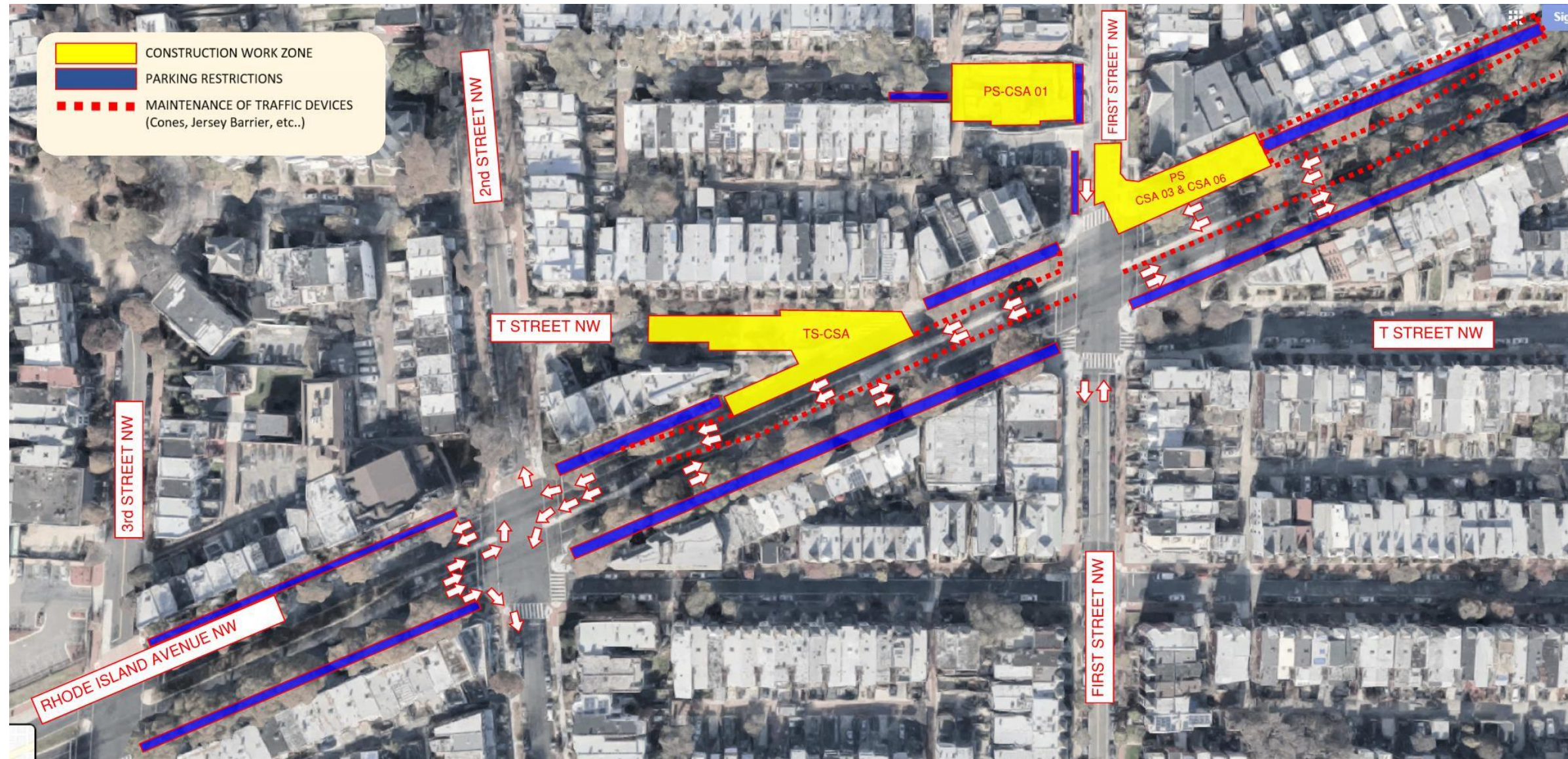
Jet grout coring will be completed in October 2020. Crews will also remove the muck bins. The jet grout mill located in the Mt. Bethel Baptist Church parking lot on Thomas and First Streets NW will remain and operate to supply the T Street NW Construction Site.

### Next Activity: Temporary Restoration

Demobilization of the First Street Pumping Station Construction Site by removing equipment and fences; modifying signals at the intersection; and temporarily restoring sidewalks and pavement. Upon completion of these activities eastbound traffic lanes between North Capitol and First Street will reopen, as well as northbound traffic on First Street.

# First Street Pumping Station & T Street NW Construction Sites

## Traffic Patterns



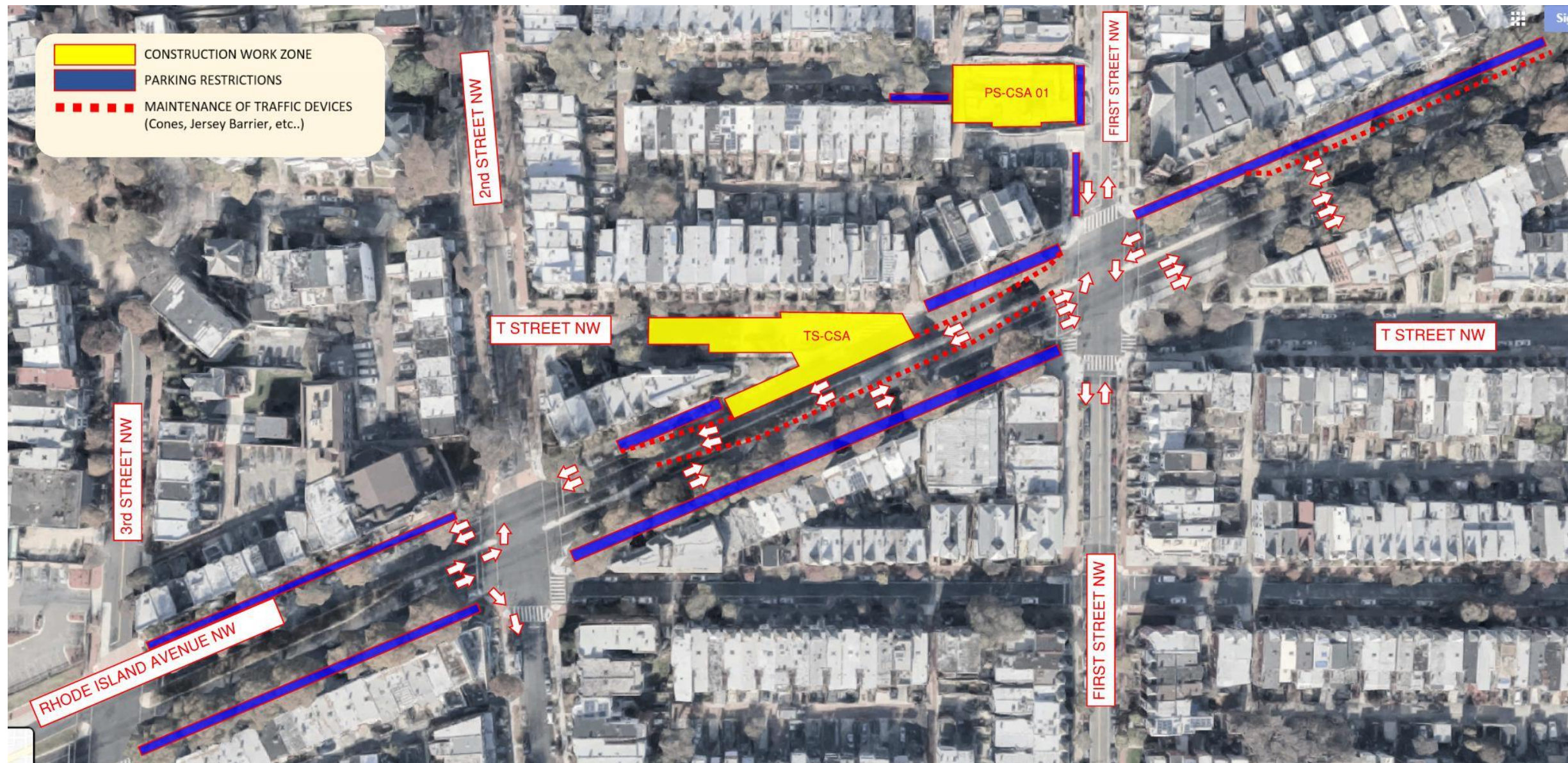
### FIRST STREET PUMPING STATION and T STREET NW CONSTRUCTION SITE – Travel Lanes

#### MAIN IMPACT:

Traffic access to the 100-block of T Street will be closed from Rhode Island Avenue NW. However, access to T Street will still be available from 2<sup>nd</sup> Street NW. Two-lanes of traffic in each direction and parking restrictions on Rhode Island Avenue.



# First Street Pumping Station Construction Site Roadway Restoration



## FIRST STREET PUMPING STATION and T STREET NW CONSTRUCTION SITE – Travel Lanes

### MAIN IMPACT:

Two lanes of westbound traffic with parking restrictions on Rhode Island Avenue NW between North Capitol Street NW and First Street NW. Three lanes of eastbound traffic and NO parking restrictions between North Capitol Street and First Street. Southbound traffic reopened on First Street beginning at Thomas Street NW.





# No Parking Signs



**Residents, please follow the No Parking signs. The closed parking lanes allow for a smooth flow of traffic.**

# First Street Pumping Station Construction Site

## Pedestrian Detour



### FIRST STREET PUMPING STATION CONSTRUCTION SITE – Pedestrian Detour

MAIN IMPACT:

On Rhode Island Avenue NW the crosswalk is closed on the eastern half of the intersection at First Street. This detour will be eliminated in November.



# T Street NW Construction Site

## Work Overview



### Current Activity: Jet Grouting

A process to strengthen existing soft ground that will allow safe excavation of the diversion chamber and drop shaft to connect to the new Northeast Boundary Tunnel. Muck pits were also installed at the site. Jet Grouting will be completed by the end of December 2020

### Next Activity: Soldier Piles

Soldier piles are part of a retaining wall system for deep excavation work. The piles have a relatively small diameter, so the work will be quieter than past secant pile drilling. Work is expected to begin following jet grouting. Duration: approximately 10-15 days.

# T Street NW Construction Site

## Pedestrian Detour



**T STREET NW CONSTRUCTION SITE – Pedestrian Detour**

**MAIN IMPACT:** At T Street NW the crosswalk is closed at the westbound side of Rhode Island Avenue NW. Pedestrians please follow the detour signs.



# Florida Avenue NW Construction Site

## Work Overview



### Completed: Sewer Repair

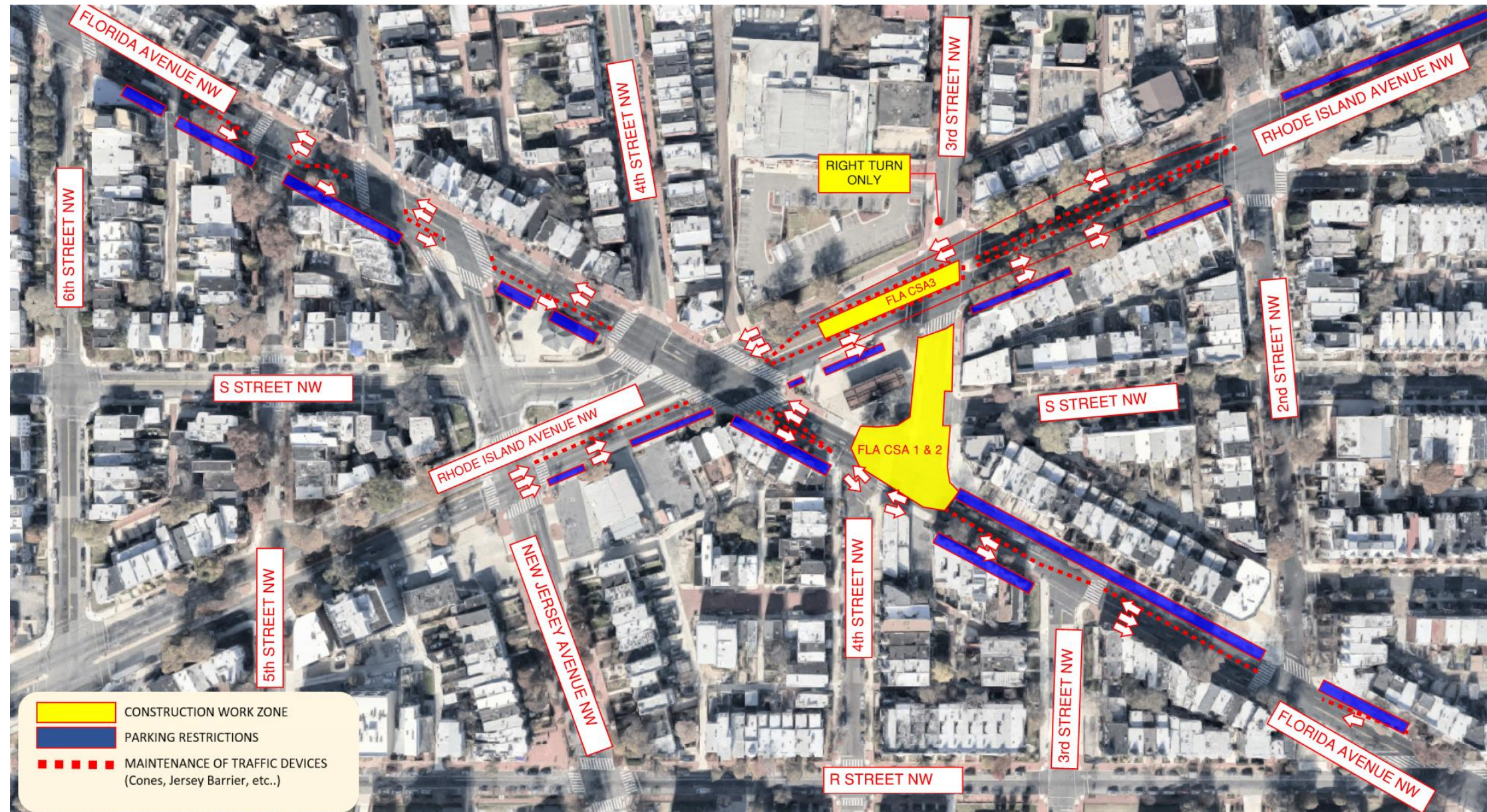
This site was damaged during the Sept 10 flooding. Crews connected a temporary flume to the existing sewer system to create a bypass. Customer service was maintained. Work required a 24-hour bypass pump for approximately a week. The pump was shrouded and positioned as far away from resident homes as is practicable.

### Next Activities: Excavation and Jet Grouting

Continuing the excavation of the diversion chamber and begin jet grouting for the adit. The jet grout mill silos will be installed closest to the BP gas station. Duration: 6-8 weeks beginning in mid-November.

# Florida Avenue NW Construction Site

## Traffic Patterns



### FLORIDA AVENUE NW CONSTRUCTION SITE – Travel Lanes

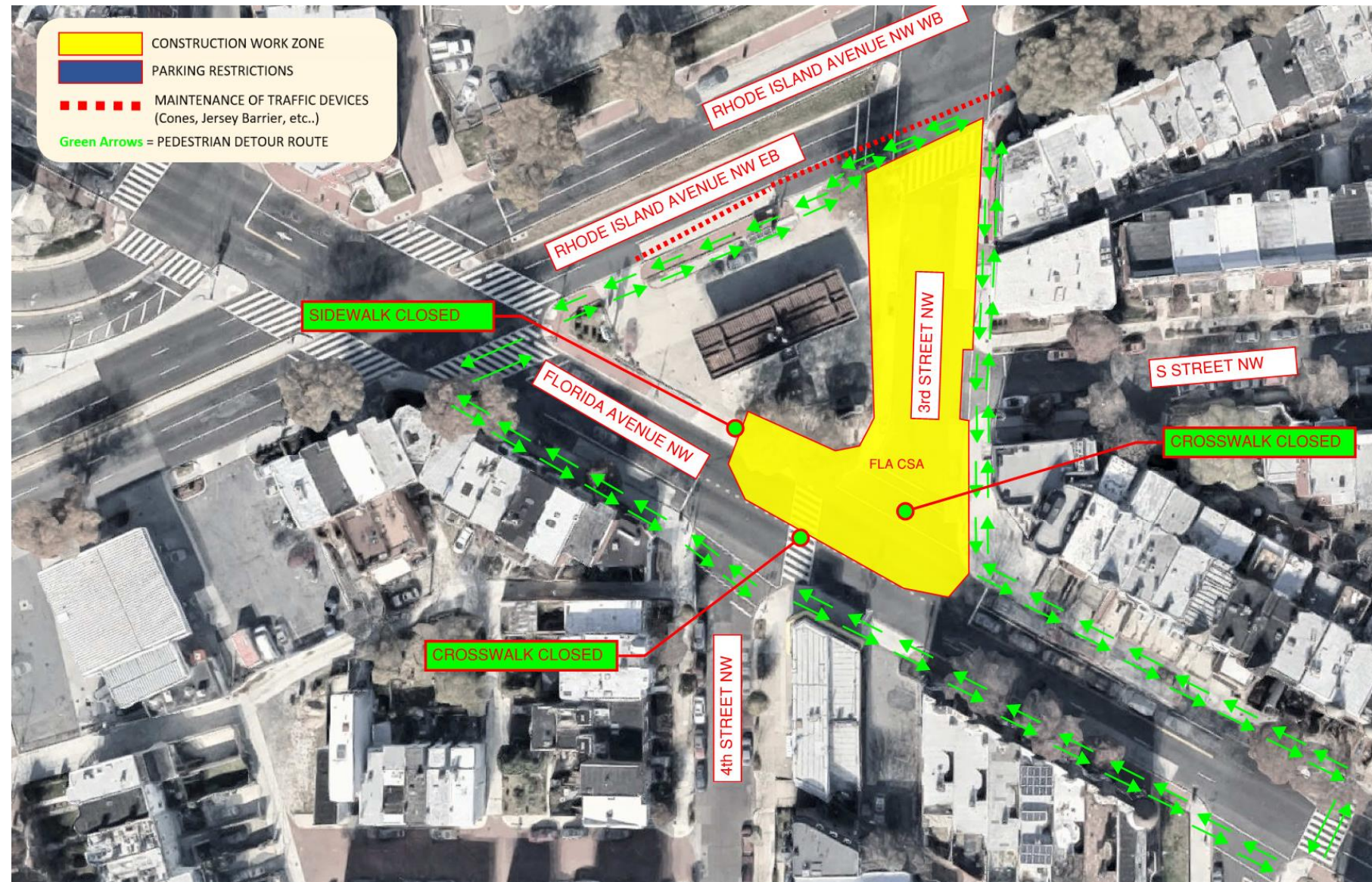
#### MAIN IMPACT:

3<sup>rd</sup> Street NW closed between Rhode Island Avenue NW and Florida Avenue NW. 3<sup>rd</sup> Street traffic southbound must turn right at Florida Avenue. One lane eastbound and westbound on Florida Ave closed. Two lanes of traffic eastbound and westbound on Rhode Island Avenue.



# Florida Avenue NW Construction Site

## Pedestrian Detour



### FLORIDA AVENUE NW CONSTRUCTION SITE – Pedestrian Detour

#### MAIN IMPACT:

Crosswalk open at Rhode Island Avenue NW at 3<sup>rd</sup> Street NW. Crosswalk closed at Florida Avenue NW between 3<sup>rd</sup> Street and 4<sup>th</sup> Street. Pedestrians please follow the detour signs.



# R Street NW Construction Site

## Work Overview

---



### Current Activity: Shaft Excavation

Shaft Excavation (46-foot diameter, 78-foot deep) began at the R Street site in September 2020 and will be completed at the end of October 2020.

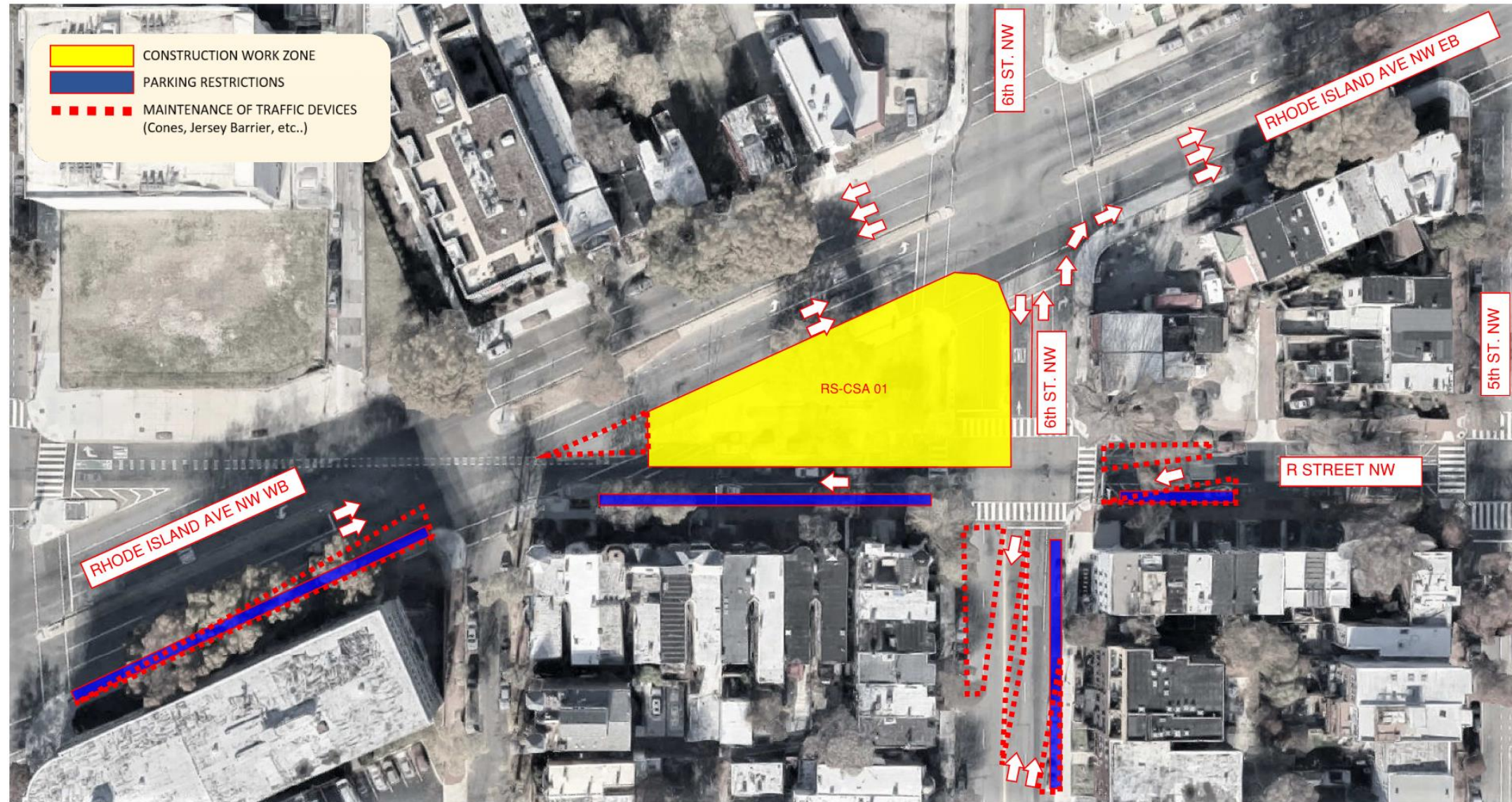
### Next Activities: Cast in Place Liner

Place concrete liner inside the shaft.  
Duration: Two months to complete (January 2021)



# R Street NW Construction Site

## Traffic Patterns



The bike lane remains open through R Street NW.

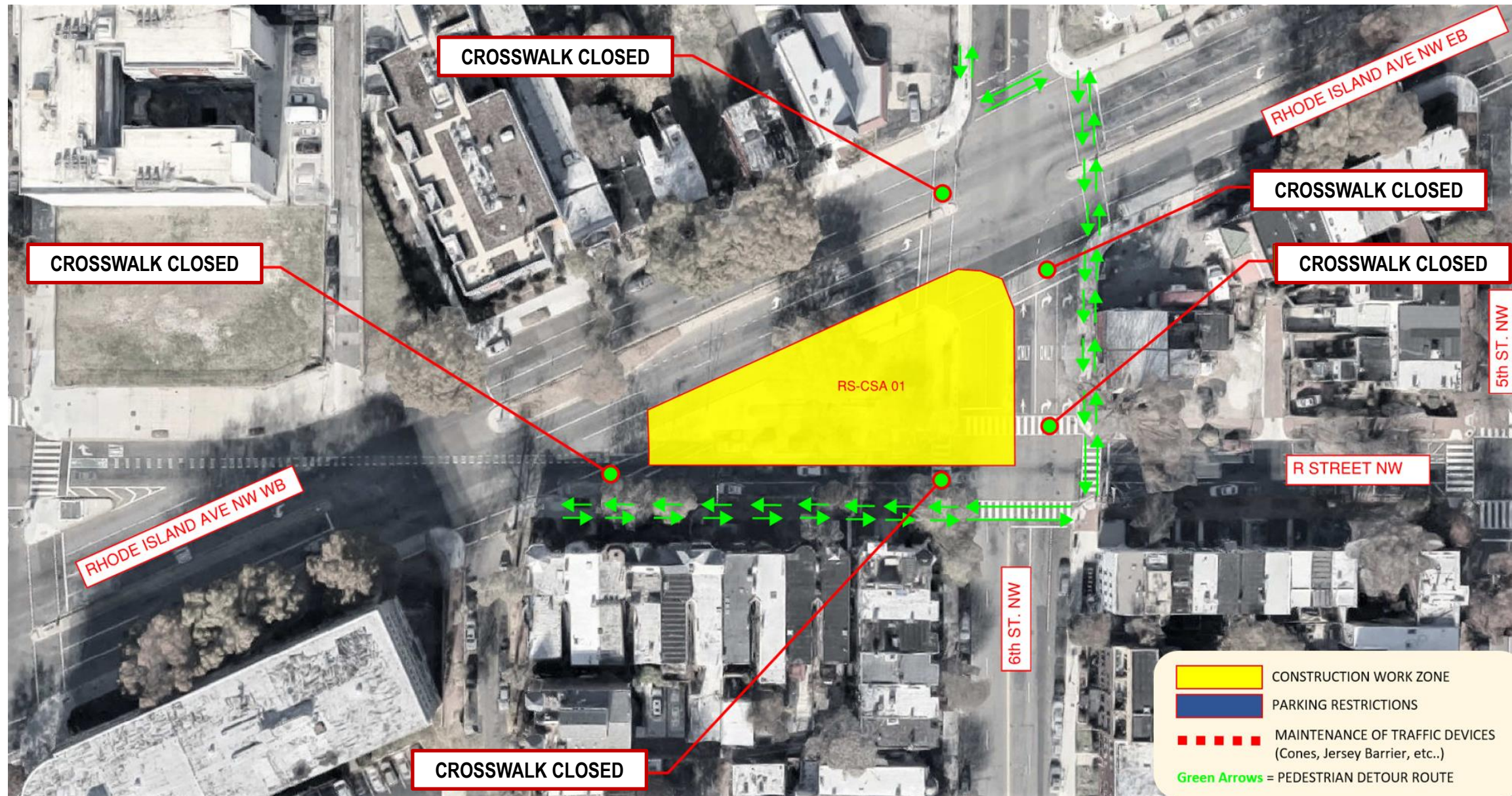
### R STREET NW CONSTRUCTION SITE – Travel Lanes

**MAIN IMPACT:** Reduction and shifting of travel lanes on 6th Street and R Street. One lane closure on Rhode Island Ave NW eastbound.



# R Street NW Construction Site

## Pedestrian Detour



R STREET – Pedestrian Detour	
MAIN IMPACT:	Crosswalk closed at Rhode Island Avenue NW and 6 <sup>th</sup> Street NW intersections and on 6 <sup>th</sup> Street and R Street NW intersection. Pedestrians please follow the detour signs.



# Alternative Parking Areas (APA)

## Alan Etter



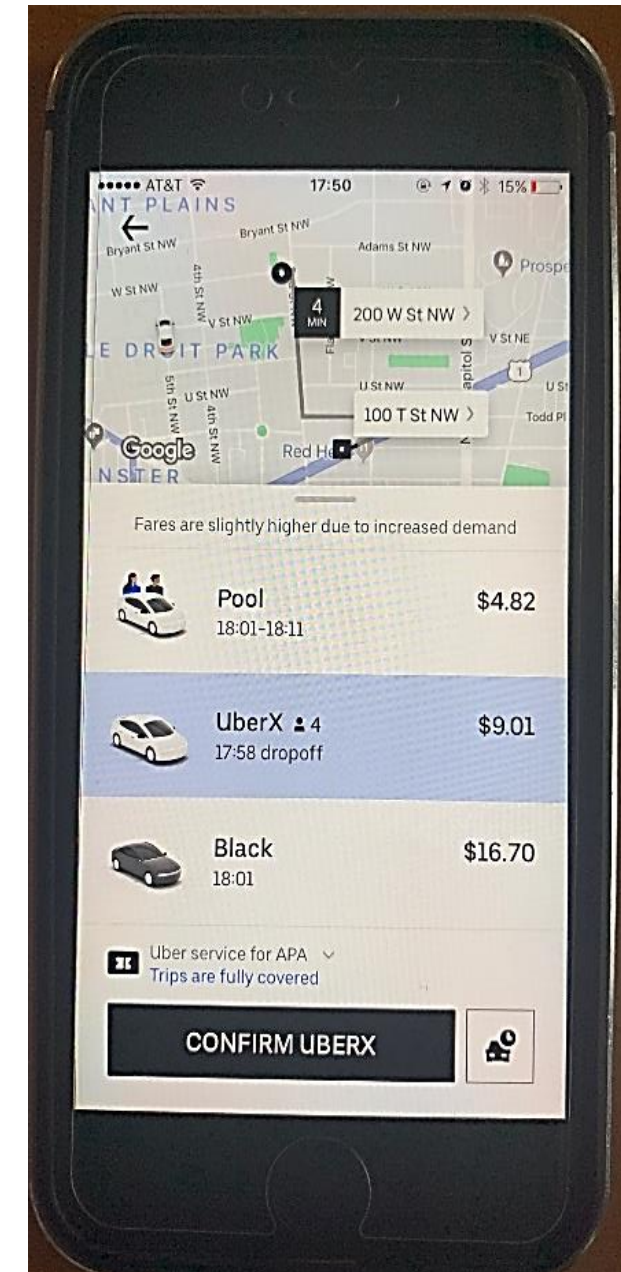
The **Bryant Street APA** is located at the intersection of Bryant Street and 2<sup>nd</sup> Street NW and is available to eligible residents.

The **LeDroit Park APA** is located on the 300 block of Elm St. NW.

To register for a parking pass at the APA, please send an email to [dccleanrivers@dcwater.com](mailto:dccleanrivers@dcwater.com) or call the NEBT Hotline at (800) 988-6151.

# How to Use the Uber Service for the Alternative Parking Areas

- Register for Bryant Street APA.  
(email: [dccleanrivers@dcwater.com](mailto:dccleanrivers@dcwater.com))
- You must have a smartphone with the Uber App installed.
- Check your email for a link. Click on the link, and the Uber App will be opened.
- Follow the instructions to download Uber Vouchers.
- When you are ready to ride, open the Uber App.
- Type in your destination.
- If you are within the geographically designated area, you will see a screen like this:



# NEBT Claims Process

---

- **If you are a property owner and you believe that construction activities undertaken as a result of this project have damaged your property in some way, you may call the 24/7 NEBT Hotline – (800) 988-6151 – to initiate the claims process. Leave a message stating that you would like to submit a claim and include your name and contact information.**
- **A member of the contractor team will visit your property and confirm the details but will not make a claim determination.**
- **The contractor has insurance and may initiate a site visit. The claim will be reported to the insurance company and further communications will occur between the property owner and the contractor’s insurance company.**
- **The claim receives a claim number and an adjuster investigates.**
- **It is recommended that when you see damage, report it.**

# Main Street Contact Information

## Hadijah Jordan

---

DC Water continues to partner with the Main Street organizations to work with businesses impacted by the Northeast Boundary Tunnel Project.



**Alexander M. Padro, Executive Director**

**875 N Street NW  
Washington, DC 20001**

**202-265-SHAW**  
[info@shawmainstreets.org](mailto:info@shawmainstreets.org)  
[shawmainstreets.org](http://shawmainstreets.org)



**Aisha Bond, Esq., Executive Director**

**Office Location:**

**22 Quincy Place, NW  
Washington, D.C. 20001**

**Mailing Address:**

**P.O. Box 29068, Washington, D.C. 20002**

**202-409-6485**  
[info@northcapitoldc.com](mailto:info@northcapitoldc.com)  
[northcapitoldc.com](http://northcapitoldc.com)

We will acknowledge questions from participants who are online and on the phone.



- **ONLINE PARTICIPANTS:** send your questions to the Host by using the Chat mode. You may also click on “Participants” to raise your hand for a question.
- **PHONE PARTICIPANTS:** press \*9 to alert us that you want to ask a question. We will unmute you when it’s your turn to ask a question.

**For more information, please contact**

Email: [dccleanrivers@dcwater.com](mailto:dccleanrivers@dcwater.com)

24/7 NEBT Hotline: **(800) 988-6151**

Northeast Boundary Tunnel Project Website: [dcwater.com/NEBT](http://dcwater.com/NEBT)

