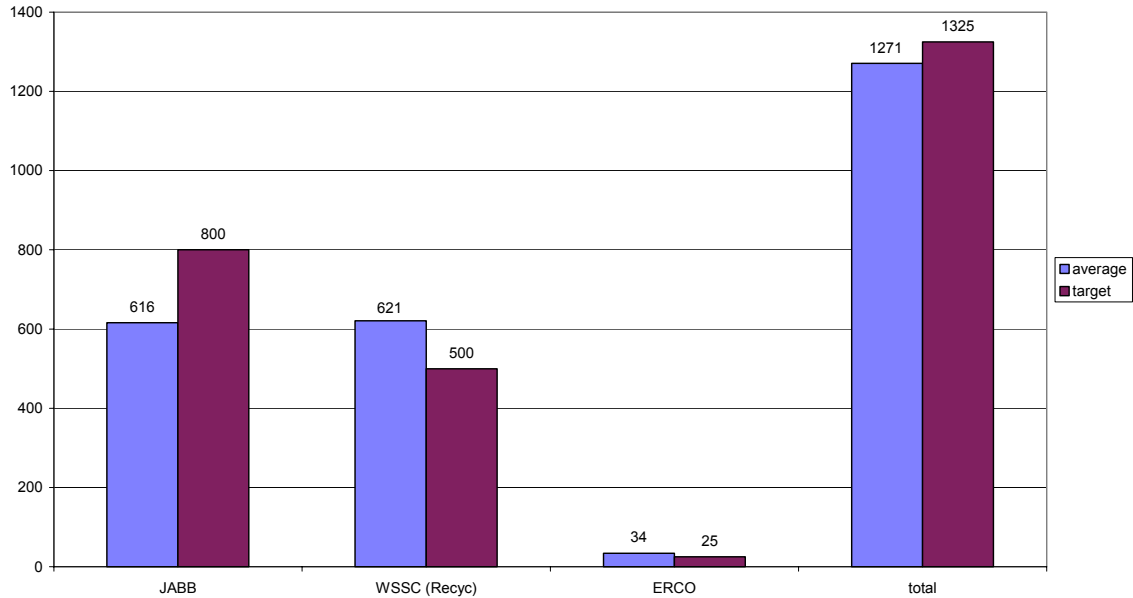


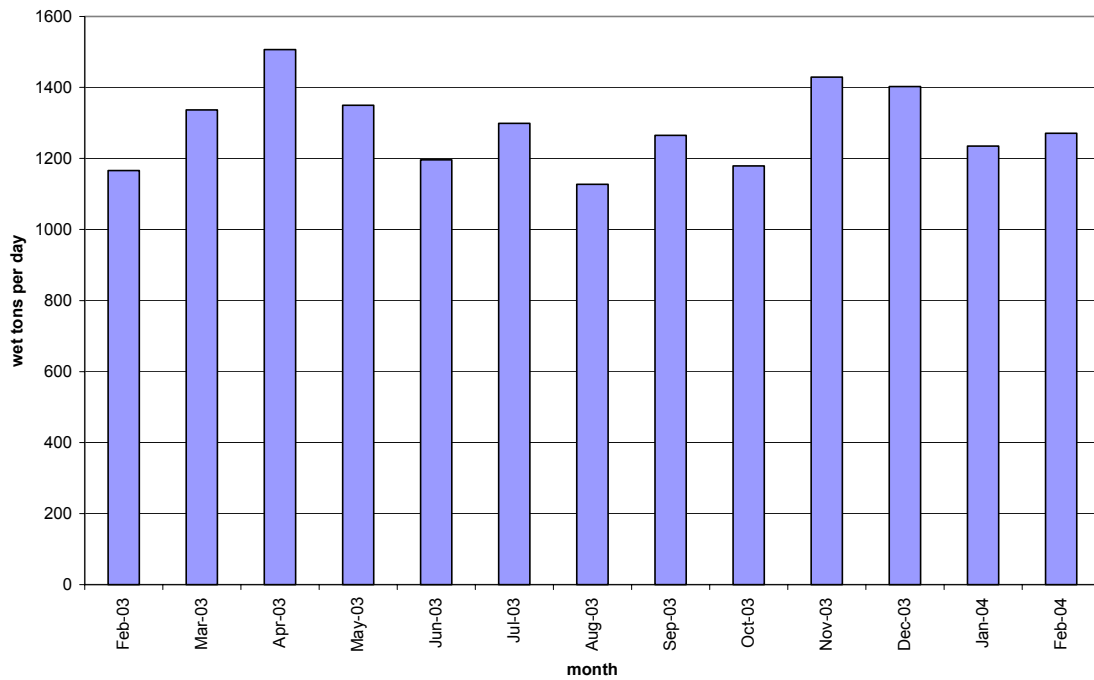
February 2003 General Managers Report – Biosolids Management

In February, biosolids hauling averaged 1271 wet tons per day. The graph below shows the hauling by contractor for the month of February. A second graph shows the average daily production per month for the previous 12-month period.

Average Daily Hauling by Contractor for February, 2003

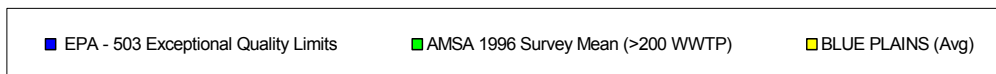
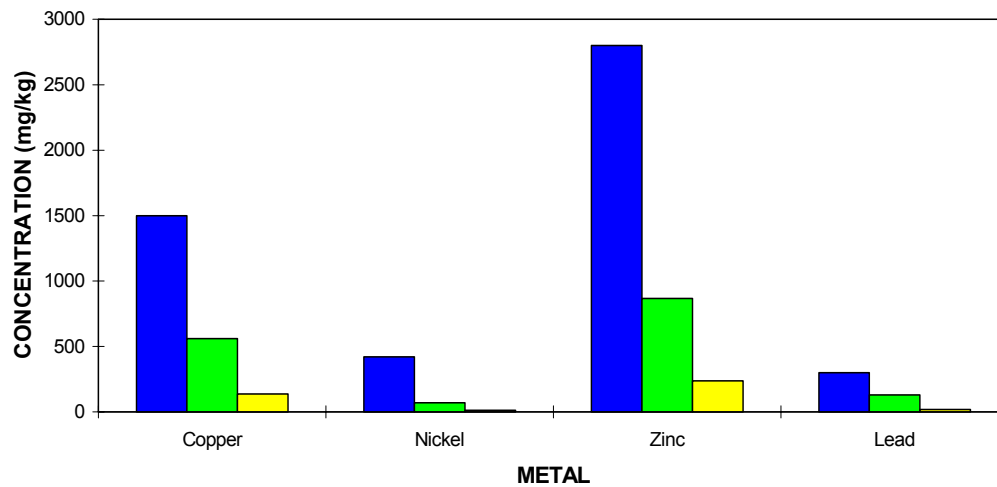
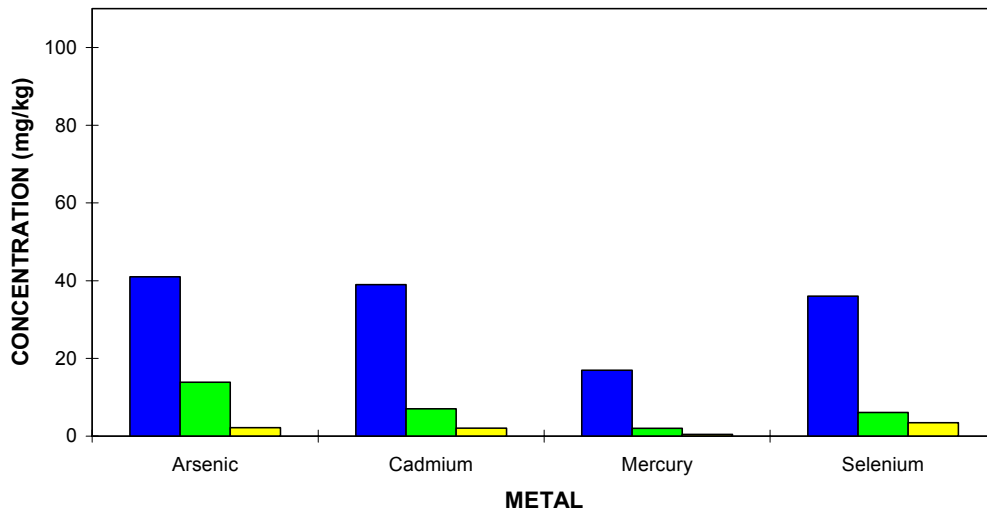


12 Month Average Monthly Biosolids Production



The graphs below show the EPA regulated heavy metals in the Blue Plains biosolids for the month of January 2003. As can be seen in the graphs, the Blue Plains levels are considerably below the regulated exceptional quality limits.

**BLUE PLAINS BIOSOLIDS METALS COMPARISON
JANUARY 2004**



HIGHLIGHTS

Staff attended the Water Environment Federation Residuals conference in Salt Lake City, Utah in February. Staff made 7 presentations on issues ranging from reaching out to interested parties in the community, the DCWASA biosolids Environmental Management System (EMS) program, regulatory changes in Virginia, and odor research. Of note, staff developed and presented along with the Biosolids Odor Research Group a diagnostic chart to help facilities diagnose and optimize odor problems with biosolids. All presentations were well received and drew considerable interest.

Staff communicated with a citizens group in Lancaster County, VA who are concerned with well buffer distances. After listening to their concerns, an agreement was reached between the contractor, the state, and the citizens group on increasing the buffer for several wells. Discussion on this issue included the concerned citizens, the involved contractors, state regulators, and staff. This communication stems from discussions held last summer after contacts were made at the WEF/EPA biosolids research summit.

Map of Blue Plains Biosolids Applications and Agricultural \$'s for January 2003

