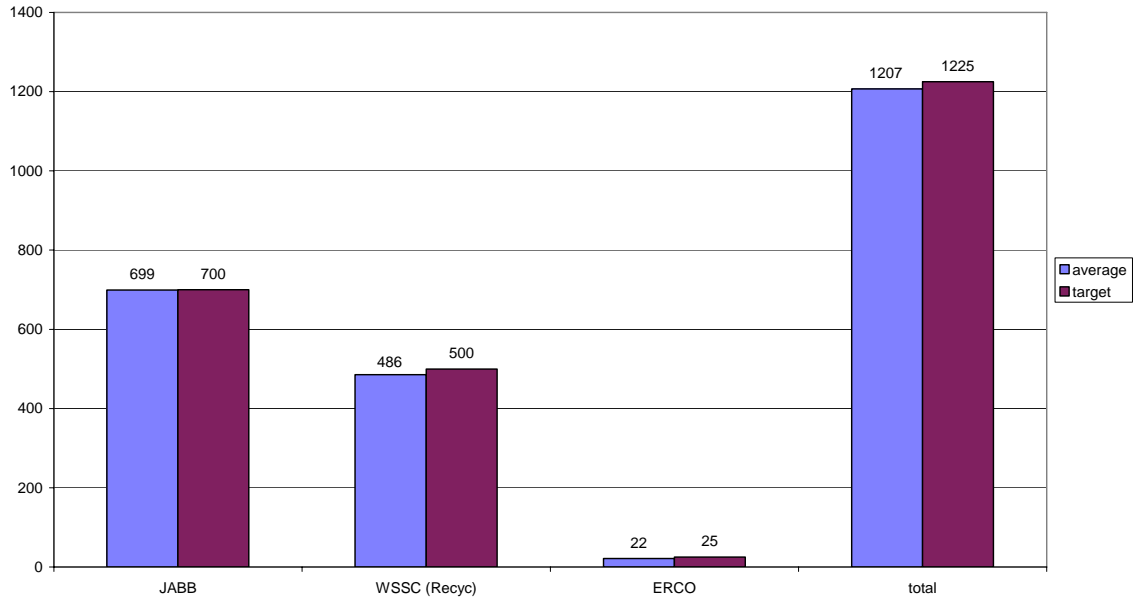


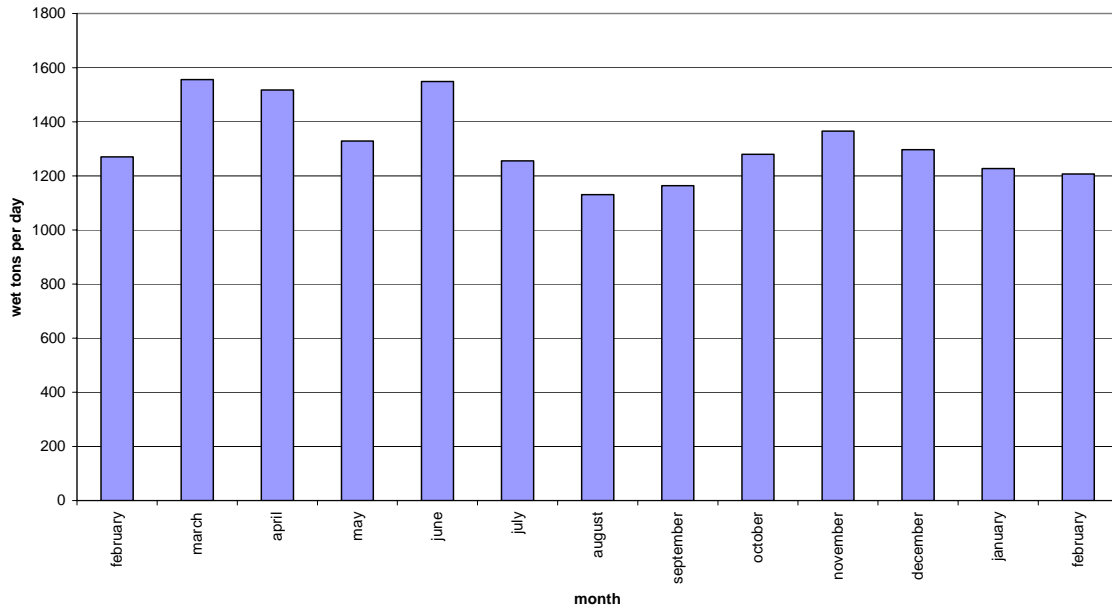
February 2005 Blue Plains Biosolids Report

In February, biosolids hauling averaged 1207 wet tons per day. The graph below shows the hauling by contractor for the month of February. A second graph shows the average daily production per month for the previous 12-month period.

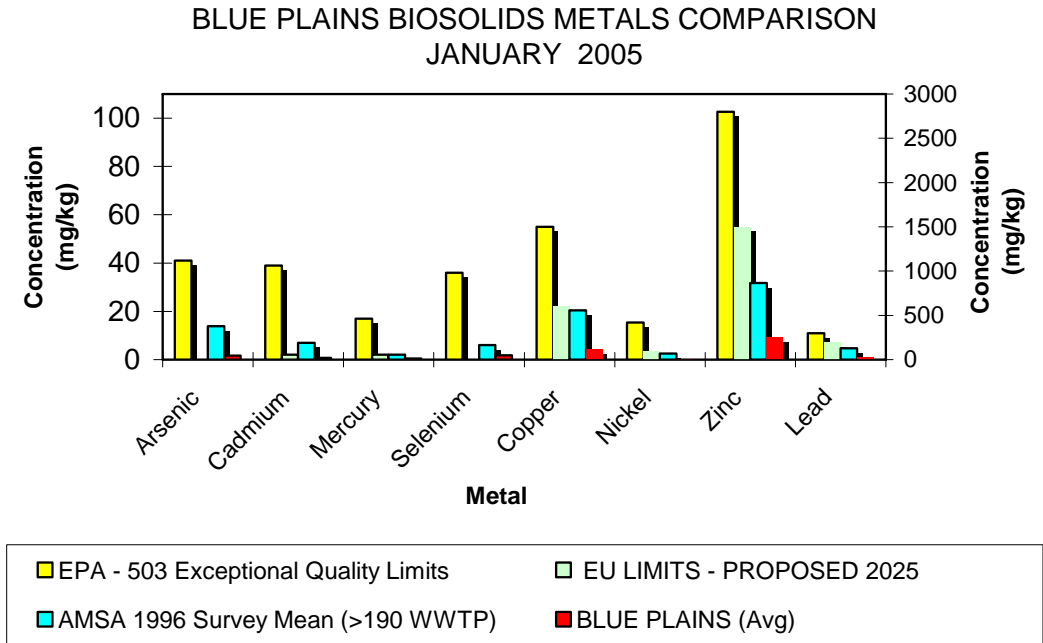
Average Daily Hauling by Contractor for February, 2005



12 Month Average Monthly Biosolids Production



The graphs below show the EPA regulated heavy metals in the Blue Plains biosolids for the month of January 2005. As can be seen in the graphs, the Blue Plains levels are considerably below the regulated exceptional quality limits, the AMSA average levels surveyed in 1996, and even the proposed 2025 European Union (EU) limits.



HIGHLIGHTS

Based in part on the success of the biosolids Environmental Management System (EMS), the WASA Department of Wastewater Treatment has decided to embark upon a plant-wide EMS for Blue Plains. In the past month, we have chosen our cross-functional team (CFT) and established agendas for the next ten CFT meetings. The Blue Plains EMS will help identify processes that need improvement and will strive toward solutions that will improve processes and communication plant-wide.

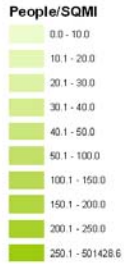
Staff hosted EPA personnel for tours of Blue Plains and two of our reuse sites. EPA will likely schedule additional staff for these tours in the future. This followed meetings with EPA personnel in downtown DC, where DCWASA staff briefed them on the biosolids program and our EMS involvement.

Map of Blue Plains Biosolids Applications and Agricultural \$'s for January 2005



January 2005 Biosolids Land Applied from Plant & Storages

County, Tons to Storage (if applicable)
Tons Applied, Agriculture\$



- Direct from Plant**
- 13 - 100
 - 100 - 200
 - 200 - 330
 - 330 - 510
 - 510 - 1111
- Out of Storage**
- 22 - 90
 - 90 - 150
 - 150 - 250
 - 250 - 330
 - 330 - 485

