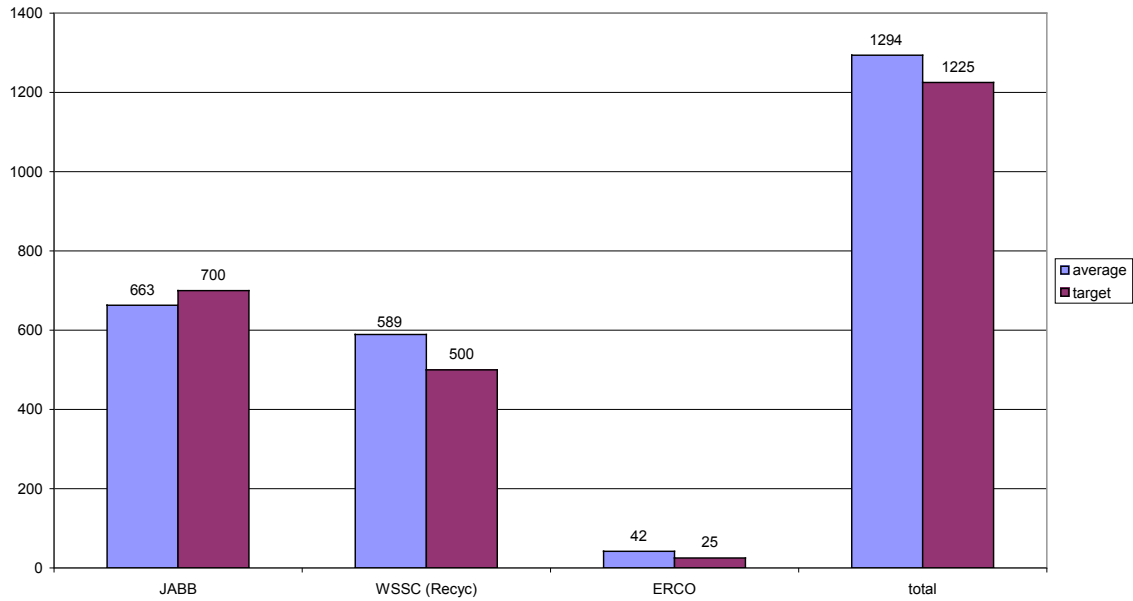


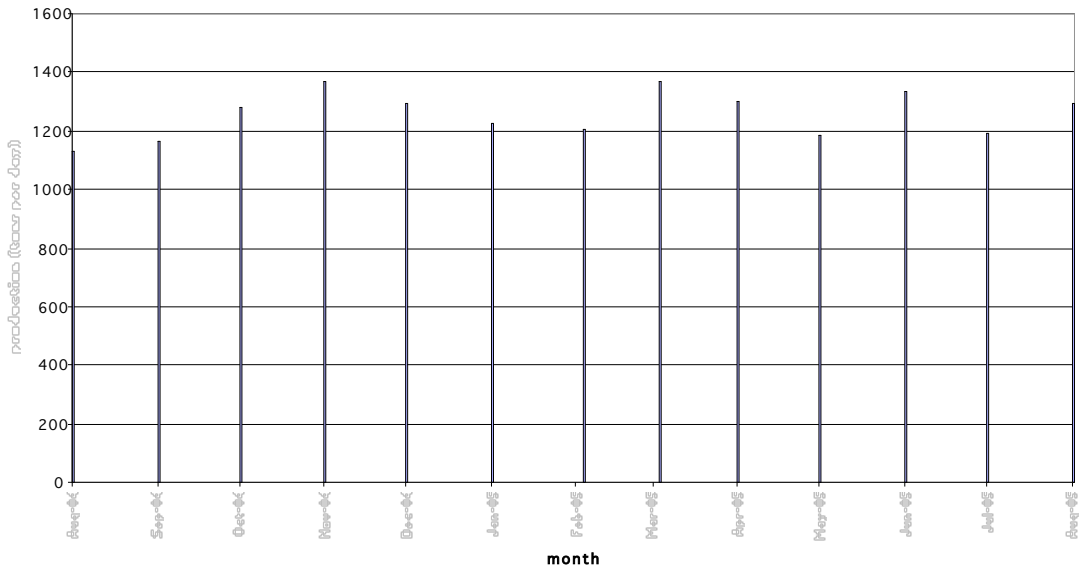
August 2005 Blue Plains Biosolids Report

In August, biosolids hauling averaged 1294 wet tons per day. The graph below shows the hauling by contractor for the month of August. A second graph shows the average daily production per month for the previous 12-month period.

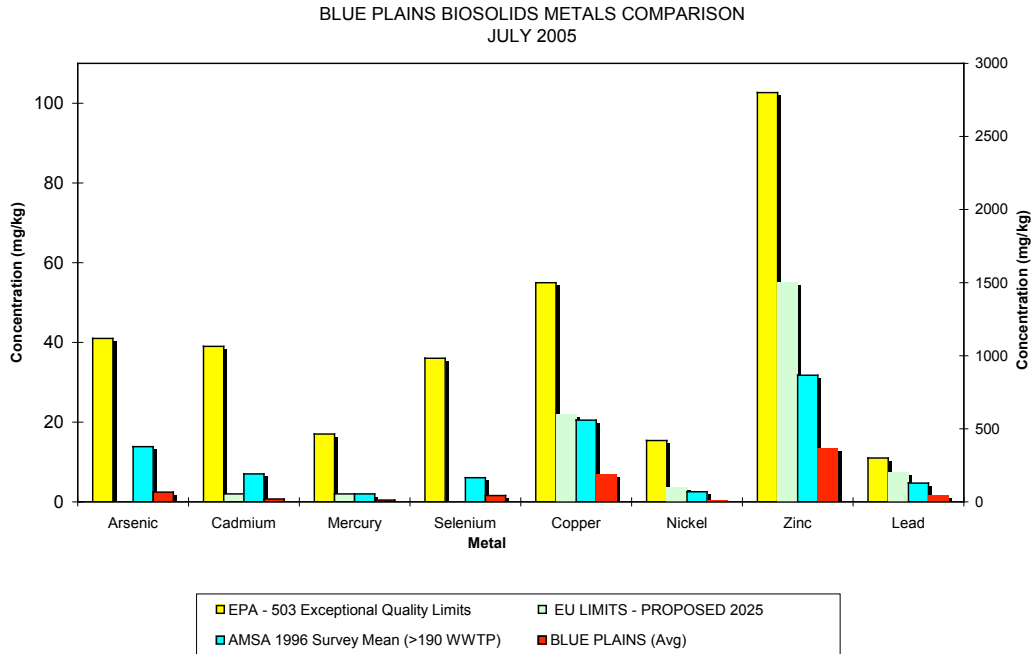
Average Daily Hauling by Contractor for August, 2005



Biosolids Average Daily Production



The graphs below show the EPA regulated heavy metals in the Blue Plains biosolids for the month of July 2005. As can be seen in the graphs, the Blue Plains levels are considerably below the regulated exceptional quality limits, the AMSA average levels surveyed in 1996, and even the proposed 2025 European Union (EU) limits.



HIGHLIGHTS

Staff attended the Virginia Ag Expo on the Northern Neck. The Ag Expo is an annual event designed to draw in a farming audience and showcase equipment, research, and services. Staff set up a biosolids booth and handed out literature and answered questions of the participants. The farming community is generally very accepting of biosolids reuse, and several new contacts were made with potential sites for reuse.

Staff is working with the National Biosolids Partnership to develop a time line for the interim audits to ensure retention of the EMS certification DCWASA received last fall. The partnership is offering an extension to the end of the calendar year to agencies in order to provide answers to questions many of the agencies have posed. DCWASA has decided to accept this extension, and staff expects the interim audit to occur in November.

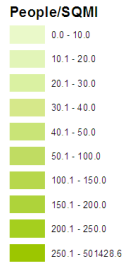
EPA informed staff that the DCWASA biosolids program will receive the annual large operating system excellence award (first place) for this year. The award is presented to the agency that shows innovative programming and is a leader in the field, and will be presented at the WEFTEC conference in Washington DC this November.

Map of Blue Plains Biosolids Applications and Agricultural \$'s for July 2005



July 2005 Biosolids Land Applied from Plant & Storages

County, Tons to Storage (if applicable)
Tons Applied, Agriculture\$



Direct from Plant

- ◊ 17 - 70
- ◊ 70 - 140
- ◊ 140 - 220
- 220 - 400
- 400 - 970

Out of Storage

- ◊ 54 - 130
- ◊ 130 - 200
- 200 - 300
- 300 - 470
- 470 - 660

