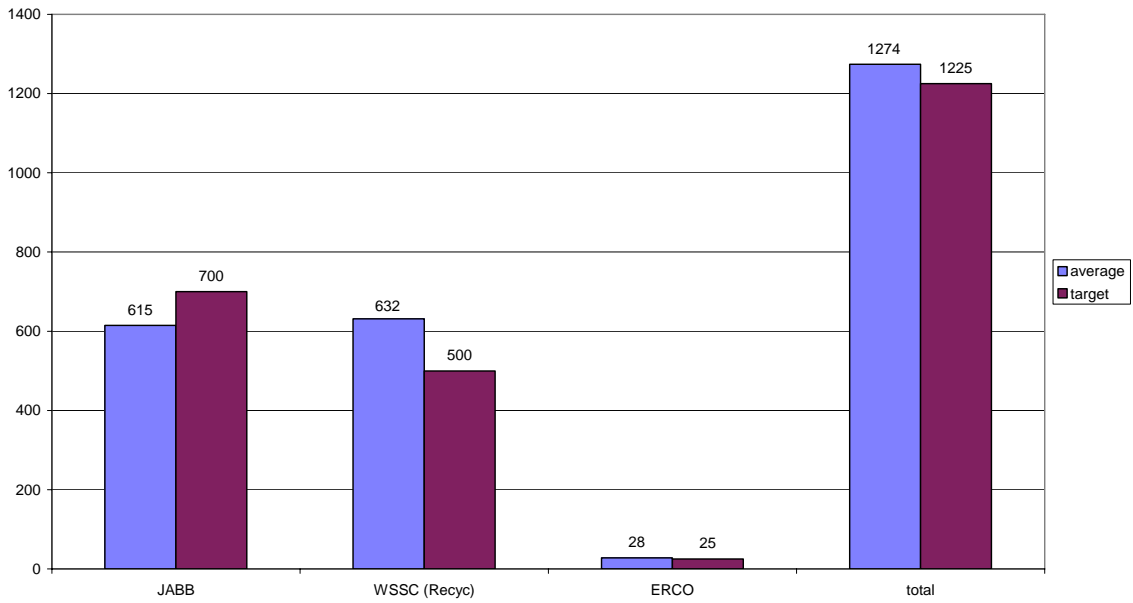


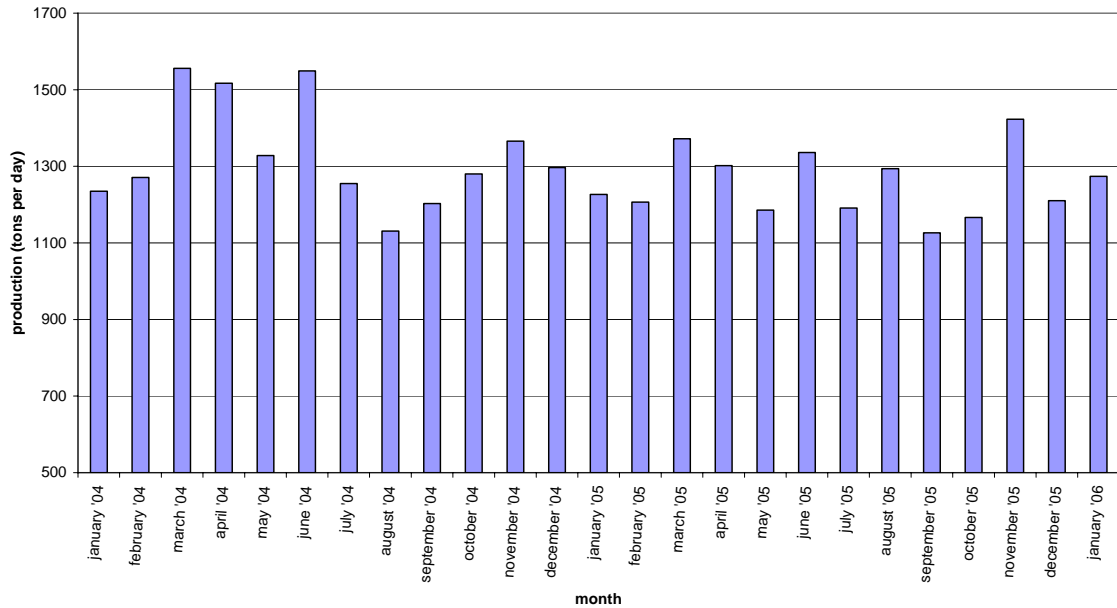
# January 2006 Blue Plains Biosolids Report

In January, biosolids hauling averaged 1274 wet tons per day. The graph below shows the hauling by contractor for the month of January. A second graph shows the average daily production per month for the previous 24-month period.

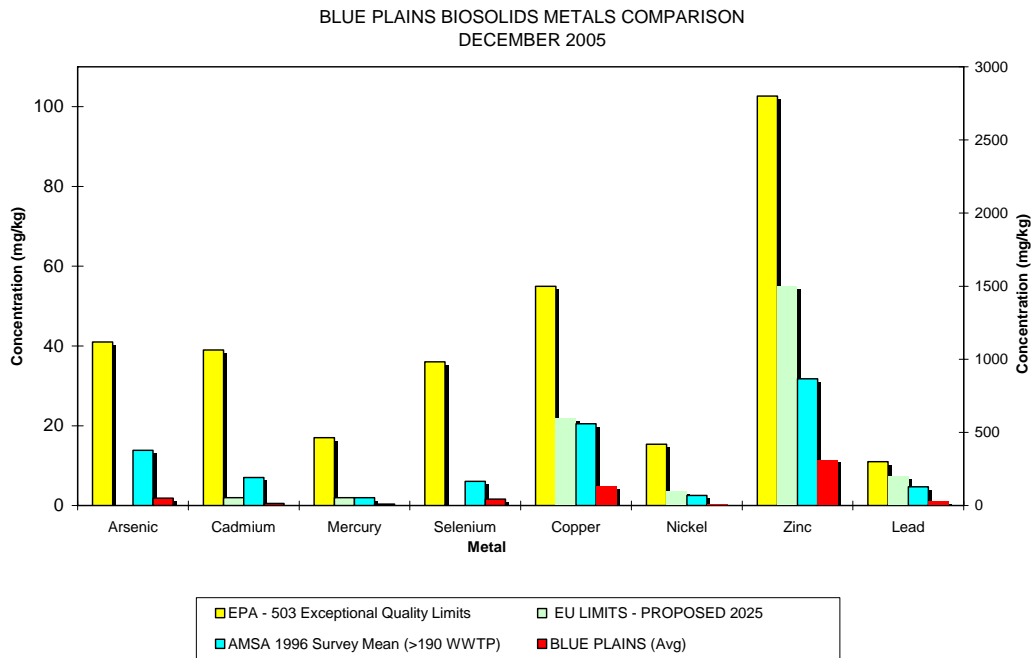
Average Daily Hauling by Contractor for January, 2006



Average Daily Biosolids Production



The graphs below show the EPA regulated heavy metals in the Blue Plains biosolids for the month of December 2005. As can be seen in the graphs, the Blue Plains levels are considerably below the regulated exceptional quality limits, the AMSA average levels surveyed in 1996, and even the proposed 2025 European Union (EU) limits.



## HIGHLIGHTS

Several bills have been introduced in the Virginia legislative session aimed at further regulating biosolids recycling in the Commonwealth. The bills, with author and short description are as follows:

HB 690 (Hogan, 3-day maximum field storage period)

HB 688 (Abbitt, restricts land application to the locality where the biosolids are generated)

HB 1134 (Cline,VDH permit fees)

HJR 101 (Byron, directs DCR and DEQ to study water quality impacts)

HB 690, HB 688, and HB 1134 did not make it out of sub-committee and were not advanced for full committee votes. Bills 690 and 1134 could be revived if compromises are reached. HJR 101 is still active at the time of this writing. Staff is tracking all bills with the help of VAMWA.

Staff hosted several of the local biosolids monitors from Virginia counties at Blue Plains for a tour of the facility. The tour was designed to allow the monitors the opportunity to learn about control measures in place at Blue Plains in order to allow them to answer questions from the public.

# Map of Blue Plains Biosolids Applications and Agricultural \$'s for December 2005



## December 2005 Biosolids Land Applied from Plant & Storages

County, Tons to Storage (if applicable)  
Tons Applied, Agriculture\$

- |                    |                          |
|--------------------|--------------------------|
| <b>People/SQMI</b> | <b>Direct from Plant</b> |
| 0.0 - 10.0         | ◦ 13 - 170               |
| 10.1 - 20.0        | ◐ 170 - 400              |
| 20.1 - 30.0        | ◑ 400 - 610              |
| 30.1 - 40.0        | ◒ 610 - 950              |
| 40.1 - 50.0        | • 850 - 1961             |
| 50.1 - 100.0       |                          |
| 100.1 - 150.0      | <b>Out of Storage</b>    |
| 150.1 - 200.0      | ◦ 23 - 50                |
| 200.1 - 250.0      | ◐ 50 - 140               |
| 250.1 - 501428.6   | ◑ 140 - 235              |
|                    | ◒ 235 - 315              |
|                    | • 315 - 440              |

