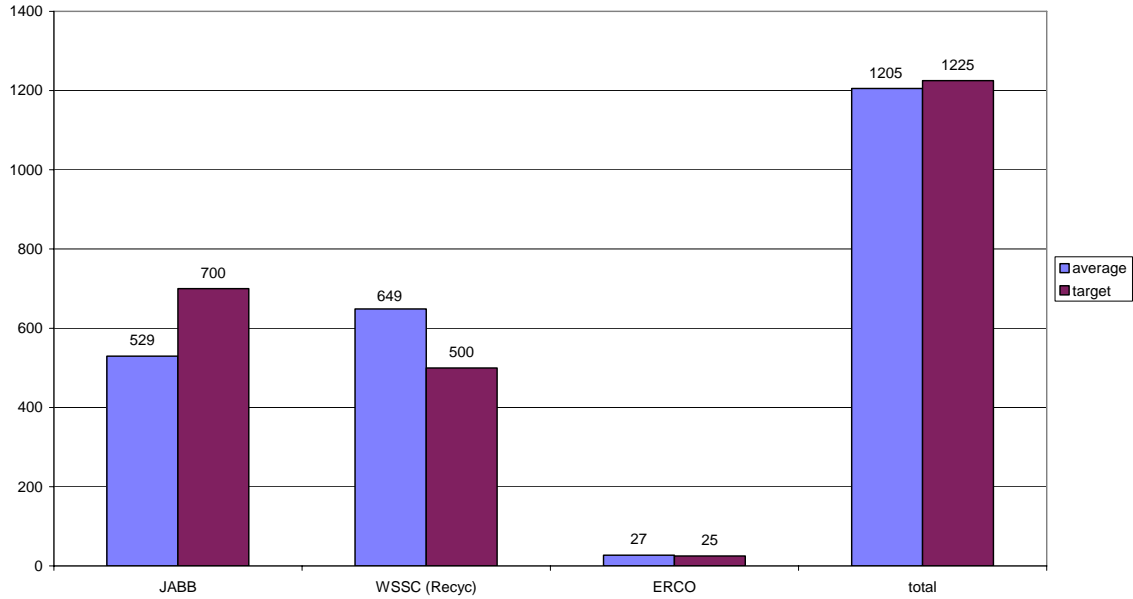


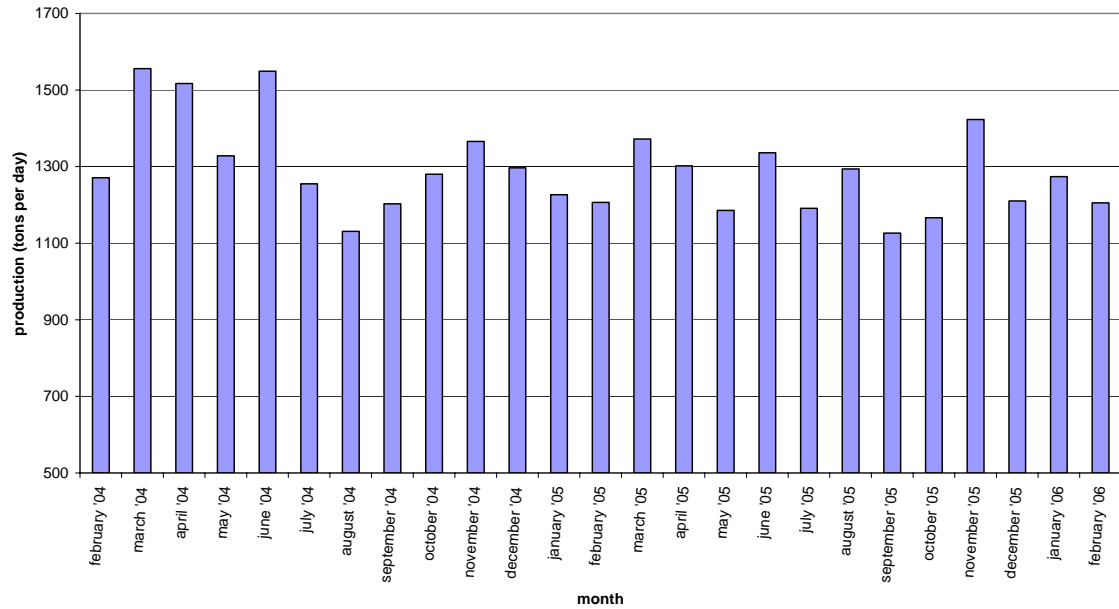
## February 2006 Blue Plains Biosolids Report

In February, biosolids hauling averaged 1205 wet tons per day. The graph below shows the hauling by contractor for the month of February. A second graph shows the average daily production per month for the previous 24-month period.

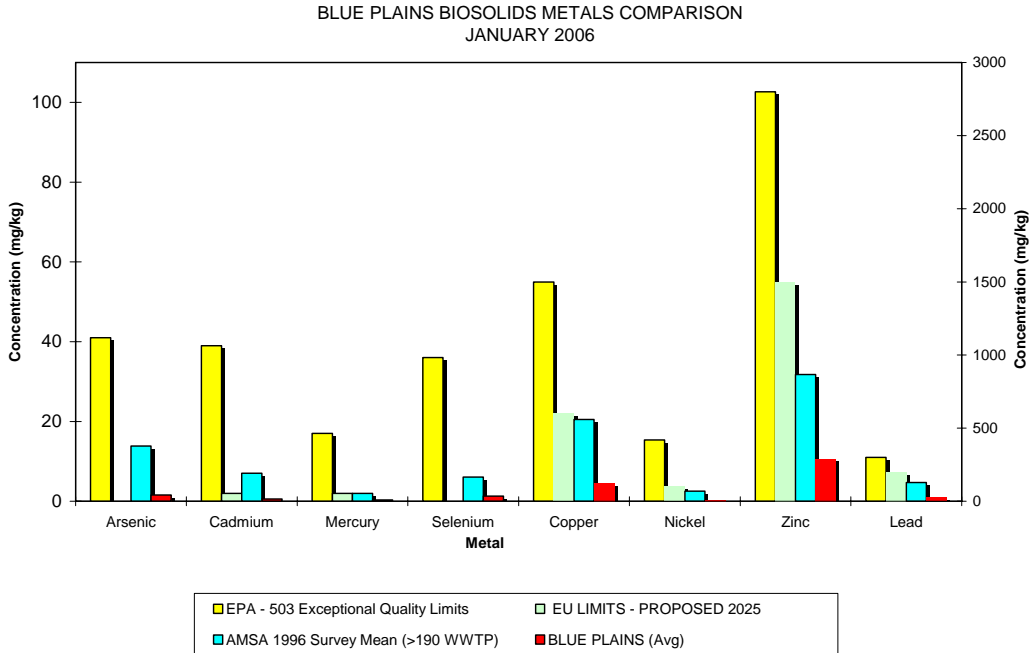
Average Daily Hauling by Contractor for February, 2006



Average Daily Biosolids Production



The graphs below show the EPA regulated heavy metals in the Blue Plains biosolids for the month of January 2006. As can be seen in the graphs, the Blue Plains levels are considerably below the regulated exceptional quality limits, the AMSA average levels surveyed in 1996, and even the proposed 2025 European Union (EU) limits.



## HIGHLIGHTS

Of the four bills that were introduced in the Virginia legislative session aimed at further regulating biosolids recycling in the Commonwealth, only one passed through for implementation. Staff calculates the bill will mean approximately \$0.25/ton increase cost for our program. The fee will be paid by the permit holder (in WASA's case the contractor) and will likely be passed through to us when the next contract language is negotiated (next November). If in fact it were passed on to us, it would mean an increase of about \$100,000 annually for the material land applied in VA. Current total program cost for biosolids is around \$16,000,000, so this represents an increase of about a half percent.

Staff participated in a planning meeting with the National Biosolids Partnership (NBP) in Alexandria to discuss the biosolids Environmental Management System (EMS) audit (interim and internal) schedule and frequency. Several of the participating agencies, including WASA, had lingering questions about how to best proceed and where potential cost savings might be found. The workshop included member agencies from across the country, NBP and EPA representatives, and 3<sup>rd</sup> party auditors. Confusion over how to proceed was cleared up, and WASA now will proceed with its internal audit and have its 3<sup>rd</sup> party interim audit by next fall.

## Map of Blue Plains Biosolids Applications and Agricultural \$'s for January 2006



# January 2006 Biosolids Land Applied from Plant & Storages

County, Tons to Storage (if applicable)  
Tons Applied, Agriculture\$

