



Construction Site | CSO 028 Fact Sheet

PROJECT OVERVIEW

The Potomac River Tunnel is the next major phase of the DC Clean Rivers Project. The project consists of a large-diameter deep sewer tunnel, diversion facilities, drop shafts, and support structures to capture flows from existing combined sewer overflows (CSOs) along the Potomac River and convey them to the Blue Plains Advanced Wastewater Treatment Plant. The project is needed to reduce CSOs that contribute to water quality impairment of the Potomac River and ultimately the Chesapeake Bay; and to comply with the 2005 Federal Consent Decree entered by DC Water, the District of Columbia, the US Environmental Protection Agency, and the US Department of Justice, as amended in January 2016.

CSOs are released into the Potomac River from CSO outfalls during rainfalls that exceed the capacity of the system. CSOs impair water quality by increasing water bacteria levels, contributing to low dissolved oxygen impacting aquatic life, and increasing the amount of trash in waterways. An estimated 654 million gallons of CSOs currently enter the Potomac River in a year of average rainfall. The proposed controls are estimated to reduce the volume of CSOs to the Potomac River by 93% and reduce their frequency from approximately 74 events to 4 events in a year of average rainfall.

Construction of the Potomac River Tunnel began in early 2024 and will be completed in 2030.

ANTICIPATED SCHEDULE

(SUBJECT TO CHANGE)



CONSTRUCTION START

Early 2025



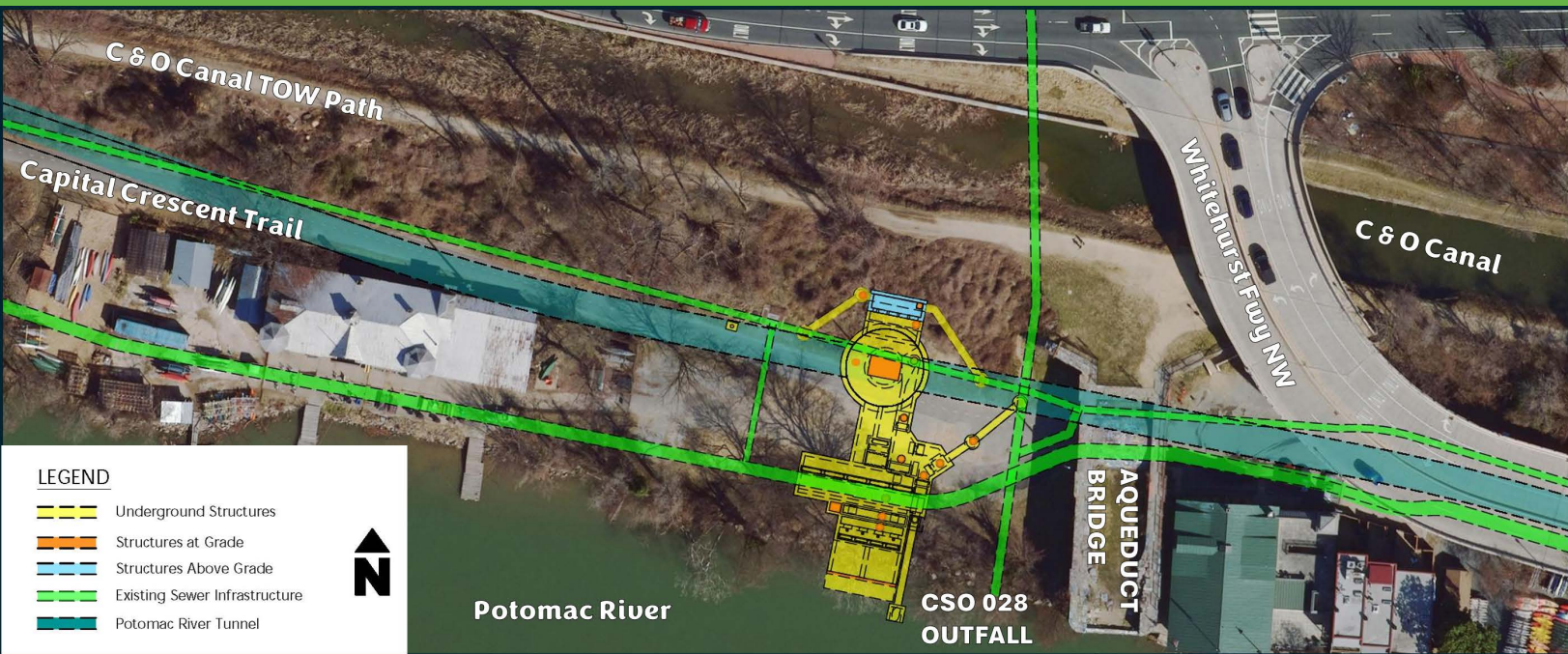
ESTIMATED CONSTRUCTION COMPLETION

2030

SITE OVERVIEW

This site is located in Georgetown, west of the Potomac (Alexandria) Aqueduct Ruins at the Capital Crescent Trail trailhead.






SCOPE OF WORK

- Installation of construction staging and fencing
- Construction of 42' diameter drop shaft
- Construction of a diversion chamber and approach channel for the CSO 028 outfall pipe
- Construction of a diversion chamber on the Upper Potomac Interceptor Relief Sewer
- Construction of the surge relief structure and other ancillary structures

WORK HOURS

 7:00 am – 7:00 pm for surface activities

PROJECT CONTACT INFORMATION

Project Email:

dcpotomacrivertunnel@dcwater.com

Project Website:

www.dcwater.com/prt

Dedicated Project Hotline:

202-972-1388

DC Water 24-hour Emergency:

202-612-3400

ANTICIPATED CONSTRUCTION ACTIVITY

- Redirect road & trails around the work site
- Bypass the existing Upper Potomac Interceptor Relief Sewer to maintain service
- Construct the drop shaft and diversion Chamber structures
- Prepare for the tunnel boring machine to pass through the drop shaft
- Construct the diversion chamber and surge relief structure which includes work within the river
- Install utilities using traffic controls on Water Street NW
- Site restoration and landscaping



SCAN ME!