



District of Columbia Water and Sewer Authority
David L. Gadis, CEO and General Manager

Northeast Boundary Tunnel Project 4th Street NE Construction Site Virtual Meeting

Thursday, June 11, 2020
Zoom Meeting



Welcome to the 4th Street NE Construction Site Virtual Meeting!



Participation Tips:

- Online meetings are subject to your bandwidth limitations. If your connection to the meeting should freeze, please exit and reenter the meeting to refresh your connection.
- All participant lines are muted to minimize disruptions. Video cameras are off as well.
- The Questions and Answers period will be held at the end of the presentation. [Please hold your questions to the end.](#)
- During the Question and Answer period of the meeting, we will acknowledge questions from participants who are online and on phone.
- **ONLINE PARTICIPANTS:** send your questions to the Host by using the Chat mode. You may also click on “Participants” to raise your hand for a question.
- **PHONE PARTICIPANTS:** press *9 to alert us that you want to ask a question. We will unmute you when it’s your turn to ask a question.

Agenda

- 1. 4th Street NE Construction Site Map**
- 2. Project Overview**
- 3. Project Benefits**
- 4. What's Completed?**
- 5. What's Next?**
- 6. Extended Work Hours**
- 7. Noise Reduction Measures**
- 8. Invitation: Tunnel Forum Meeting**
- 9. Questions & Answers**
- 10. Contact Information**

Northeast Boundary Tunnel Project Overview

Hadijah Jordan

- Reduce flooding and basement backups in the Northeast Boundary drainage area
- Reduce the discharge of untreated wastewater into the Anacostia River and improve water quality
- Reduce risks to human health



Project Benefits

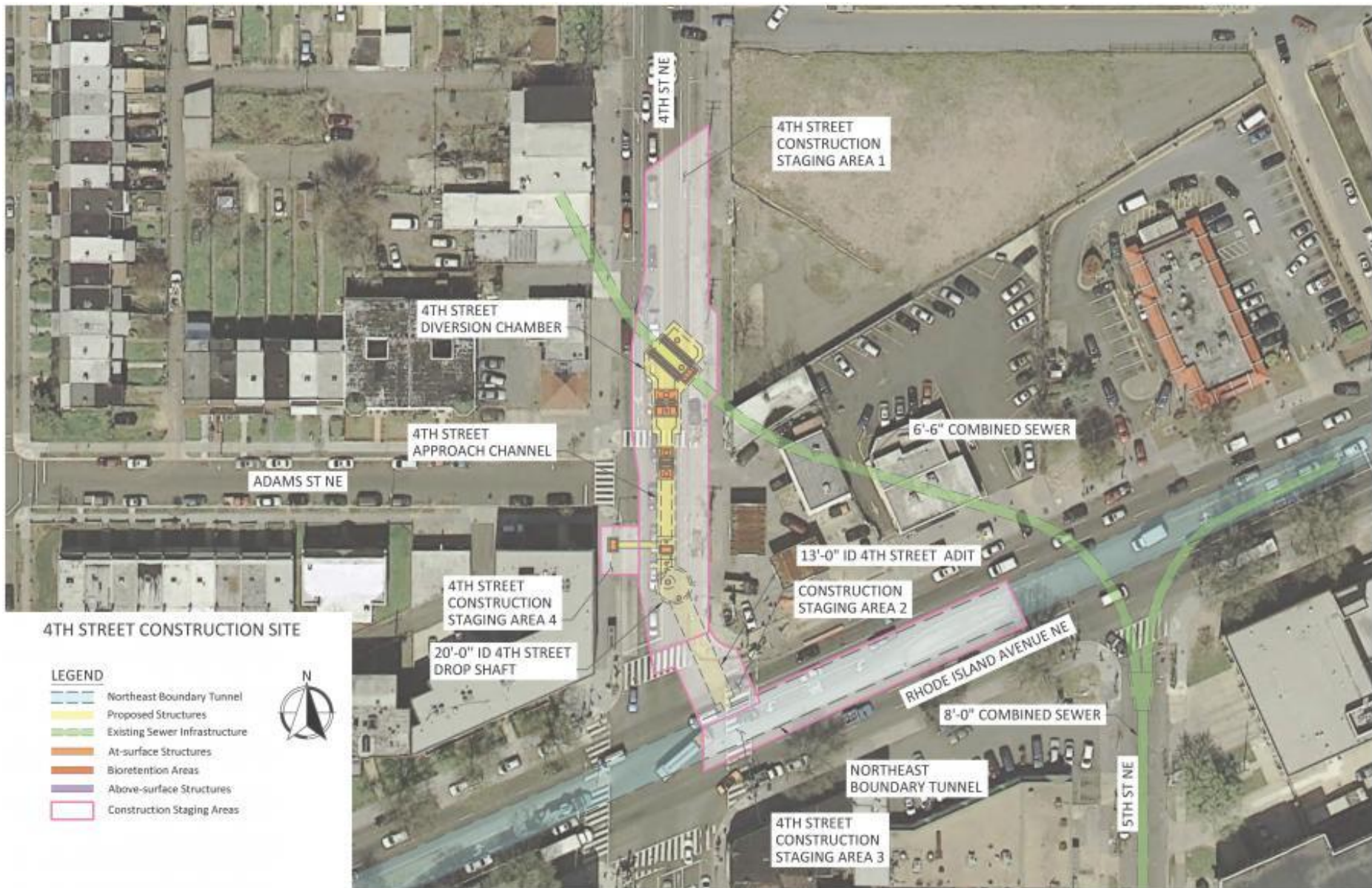
To date the Anacostia River Tunnel has captured

- 7.9 billion gallons combined sewer overflows
- 3,900 tons trash



4th Street NE Construction Site Map

Shane Yanagisawa



What's Completed at the 4th Street NE Construction Site?

- Excavation of the drop shaft which is approximately 100 feet deep with an inside diameter of 23 feet.
- The soil freeze system is operating. The soil freeze system hardens the ground to support excavation work.
- The flume piping is now inserted into the existing sewer so that temporary bypass pumping is no longer necessary.



View down
the drop shaft

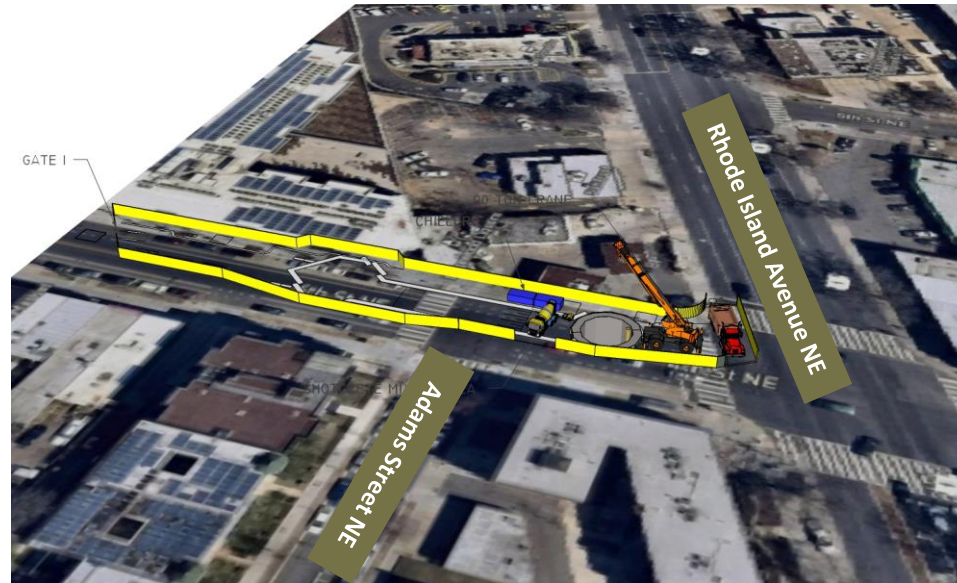


Soil freeze system
behind noise barriers



Flume serving as the temporary
bypass of the existing sewer system

Ground Freezing

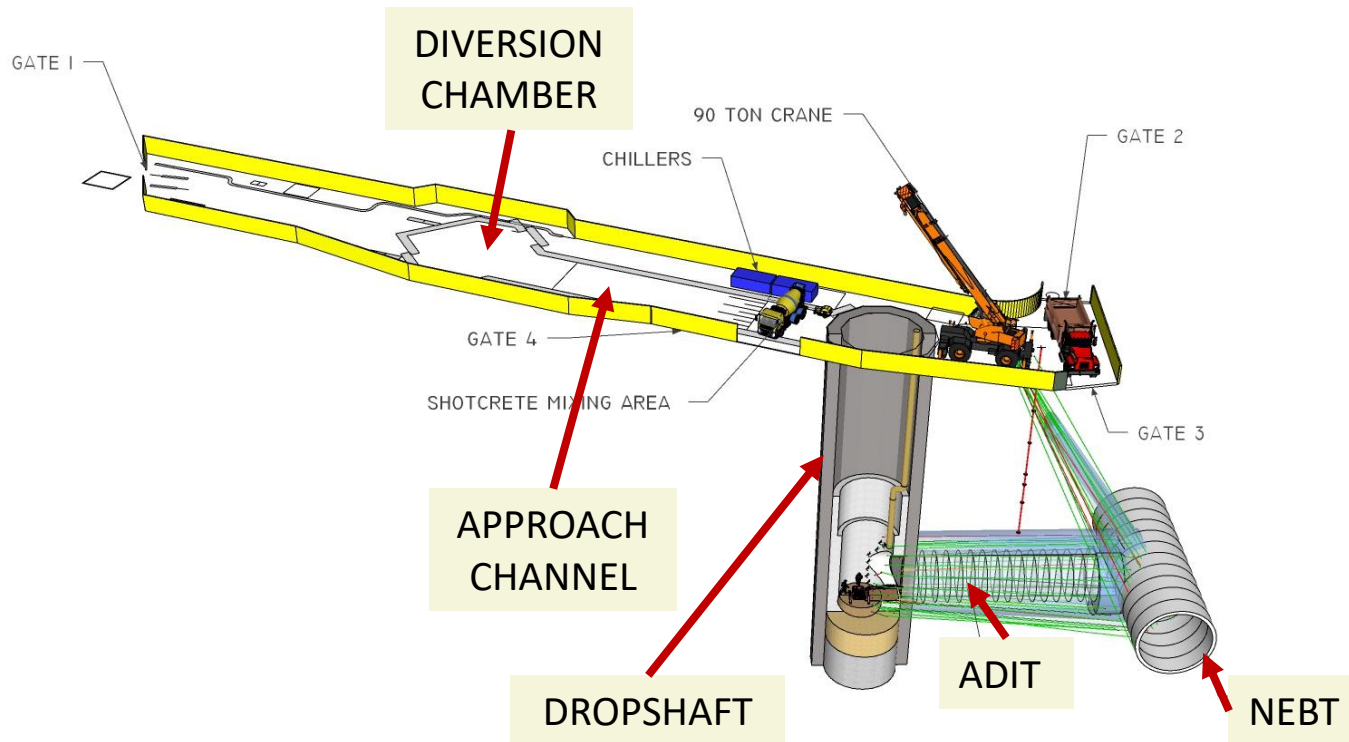


Ground freezing is a construction technique used in circumstances where **soil** needs to be stabilized so it will not collapse next to excavations, or to prevent contaminants spilled into **soil** from being leached away.

- **Ground freezing** has been used for at least one hundred years.
- The ground is frozen now and maintained.
- The thaw begins in September 2020.

What's Next – Summer 2020 Construction Activity

- Excavate the adit
- Excavate the Near Surface Structures– the diversion chamber and approach channel



Extended Work Hours

Construction Dates are Approximate



The work hours will be adjusted in mid June 2020. We anticipate ending the extended work hours in December 2020.



Workdays:
Monday – Saturday



Work Hours:
7:00 AM to 11:00 PM

Why Extended Work Hours

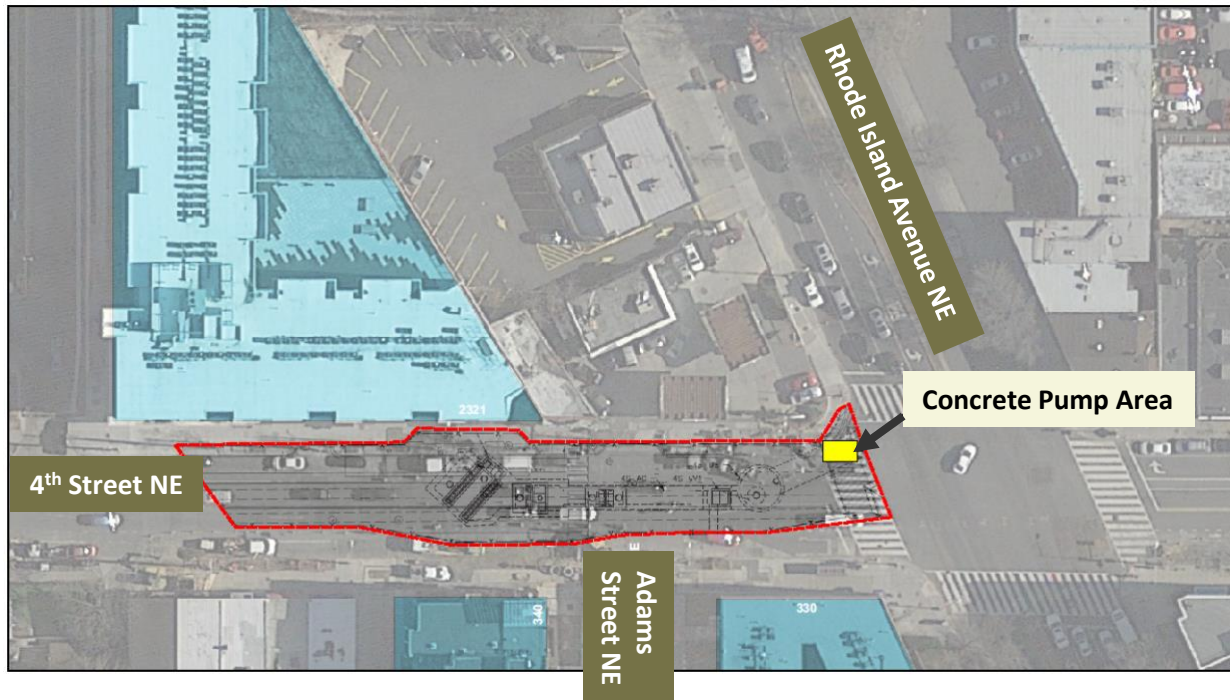
- **Implementing extended work hours is a risk reduction measure and helps to maintain the schedule.**
- **Important to work expeditiously in frozen ground so the freeze can be turned off and ground thawing can start.**
- **We also want to end the need for the loud pumps and generators.**
- **Extending work hours helps to keep the work on schedule. This is a small footprint site with lots of complex construction activities.**
 - Assist the site's readiness for the TBM arrival expected in September 2020.
 - Meet the 4th Street NE Construction Site completion date of Summer 2021.

Construction Dates are Approximate

Noise Reduction Measures

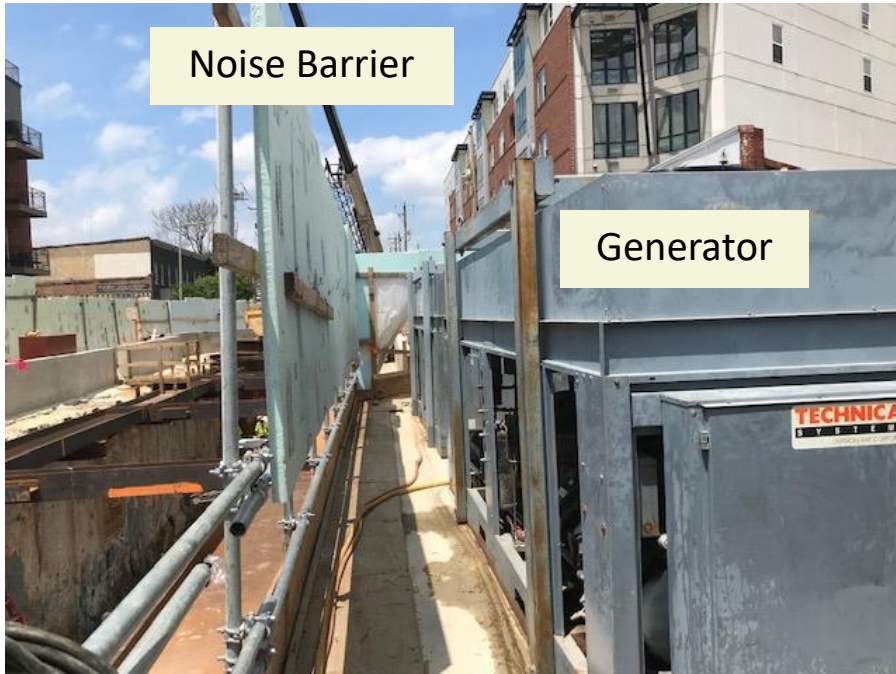
Gabe Illingworth

- Much of the nighttime work (7:00 PM – 11:00 PM) will occur within the dropshaft, approximately 100 feet underground.
- Support equipment at the surface will be used as minimally as possible during nighttime hours.
- Surface equipment that generates significant noise levels will be positioned furthest away from residents.



Legend:
Red Line =
Construction
Site Outline

Noise Reduction Measures



- Sound dampening noise barriers erected near noise generating machines, such as generators.
- Noise and vibration monitoring will be conducted 24/7 to ensure limits are not exceeded.



- The shotcrete pump will not be in continuous use. When support equipment will be needed, the equipment will be covered with noise barriers.

Invitation: Tunnel Forum Meeting

Alan Etter

Join Us at the next Tunnel Forum Meeting

Thursday, July 16, 2020, at 6:30 PM

Agenda

- ◆ Construction updates, impacts, and schedule
 - ◆ 4th Street NE Construction Site
 - ◆ Rhode Island Avenue NE Construction Site

We will distribute the Zoom meeting details next week.

Questions & Answers



We will acknowledge questions from participants who are online and on phone.

- **ONLINE PARTICIPANTS:** send your questions to the Host by using the Chat mode. You may also click on “Participants” to raise your hand for a question.
- **PHONE PARTICIPANTS:** press *9 to alert us that you want to ask a question. We will unmute you when it’s your turn to ask a question.



For More Info

- [24/7 NEBT Hotline: \(800\) 988-6151](tel:8009886151)
- [Email: dccleanrivers@dcwater.com](mailto:dccleanrivers@dcwater.com)
- [Website: dcwater.com/NEBT](http://dcwater.com/NEBT)