
Clean Rivers Project Northeast Boundary Tunnel (NEBT) Tunnel Forum Meeting

March 31, 2022

Construction Sites

- First Street Pumping Station
- Florida Avenue NW
- T Street NW
- R Street NW

Greetings Neighbors!

Welcome to the Tunnel Forum Virtual Meeting!



Participation Tips:

- Online meetings are subject to your bandwidth limitations. If your connection to the meeting should freeze, please exit and reenter the meeting to refresh your connection.
- **Participants may opt to turn on or off your video.**
- All participant lines are muted to minimize disruptions.
- The **Questions and Answers (Q&A) period** will be held at the end of the presentation. **Please hold your questions until the Q&A portion of the meeting.**
- During the Q&A period of the meeting, we will acknowledge questions from participants who are online and on phone.
- **ONLINE PARTICIPANTS:** send your questions to the Host by using the Chat mode. You may also click on “Participants” to raise your hand for a question.
- **PHONE PARTICIPANTS:** press *9 to alert us that you want to ask a question. We will unmute you when it’s your turn to ask a question.

Agenda

1. Site Safety
2. Anacostia River Tunnel System
3. Responses to Recent Concerns
4. Construction Site Updates
 - [First Street NW Pumping Station](#)
 - [T Street NW](#)
 - [Florida Avenue NW](#)
 - [R Street NW](#)
5. NEBT Claims Process
6. Main Streets Partnership
7. Outreach Team Contact Information

Safety *(Alan Etter)*

Coronavirus restrictions have been lifted for most indoor and outdoor areas. Lane Construction abides by the latest DC Department of Health and DC Water guidance.

- Masks are optional but encouraged indoors
- Social distancing is optional but encouraged indoors
- Testing is made available if symptoms appear
- Constant monitoring of local and regional trends
- NEBT meetings will continue to be virtual

To inquire about the city's Coronavirus status, call [1-855-363-0333](tel:1-855-363-0333) or visit coronavirus.dc.gov.

Site Safety: Four Points

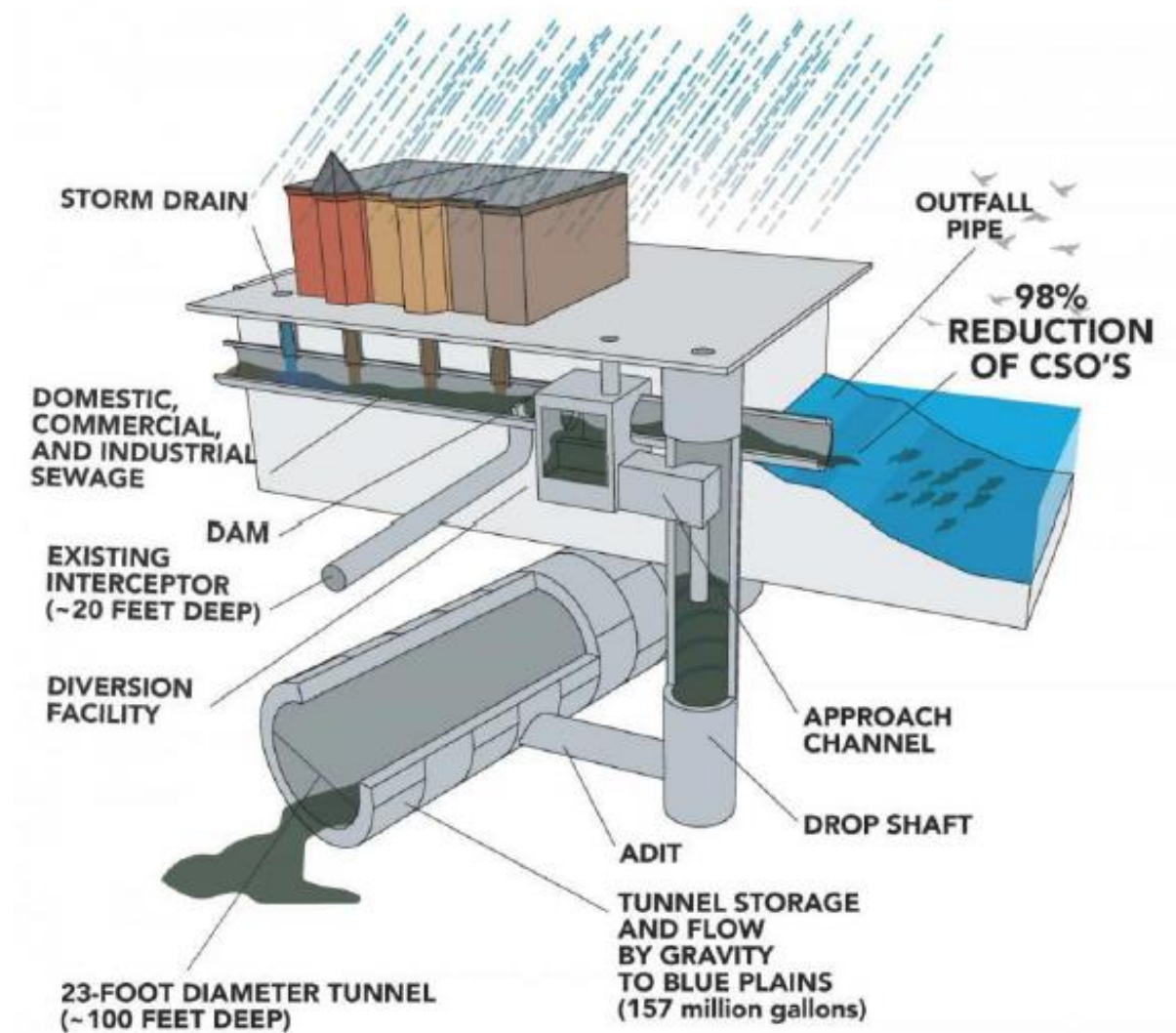
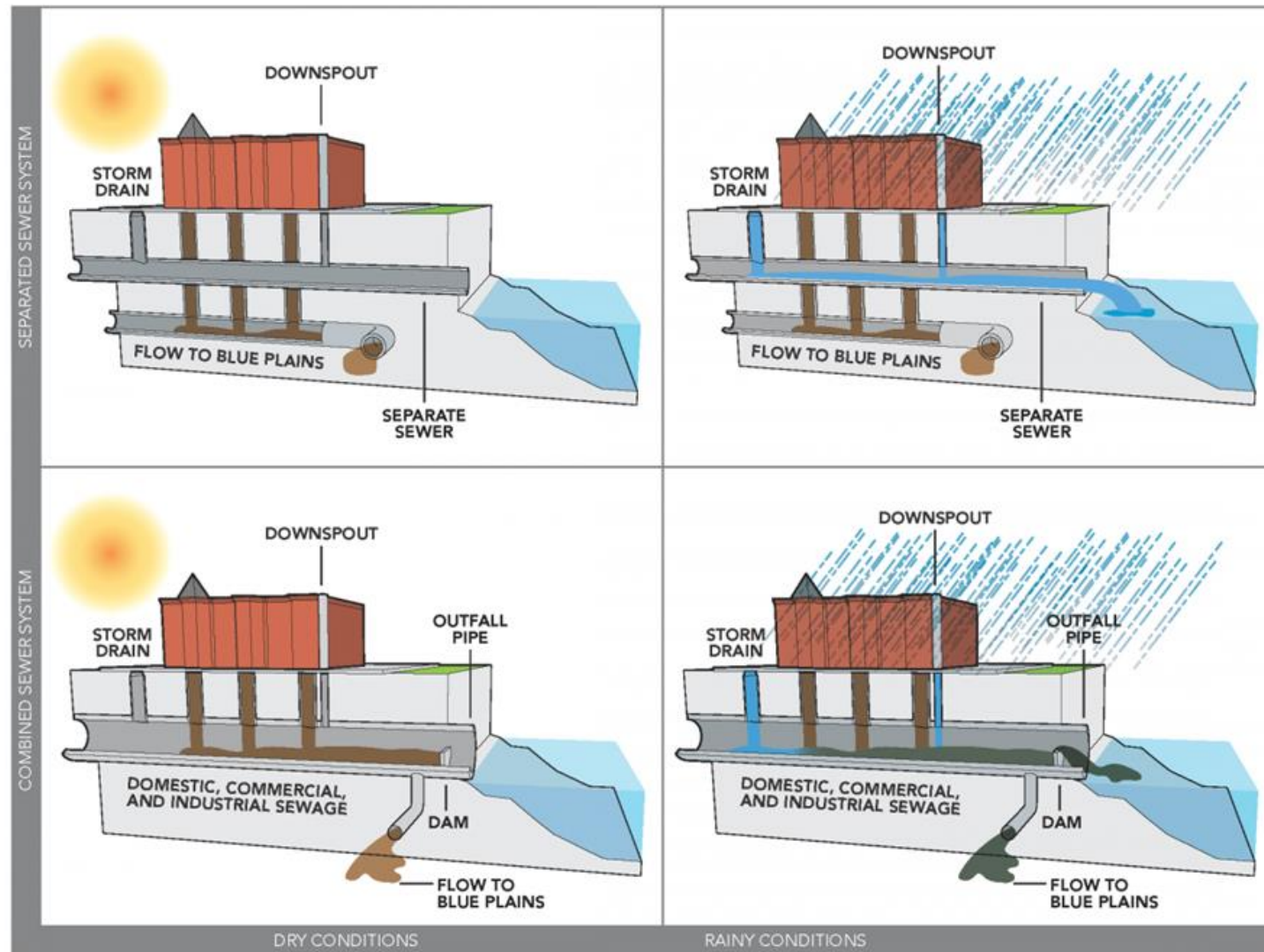
- Pay attention to all signs and stay on designated walking paths near and around active sites
- All construction equipment have the right of way—dump trucks, lowboys, forklifts, etc.
- Listen to the direction of site personnel while construction activities are going on around the site
- All construction entrances and exits must always remain clear of the public's vehicles or during work activities



Outreach Concern/Response *(Tijuana Haynes)*

CONCERN	RESPONSE
<p>During construction at First and Thomas Streets NW, the existing District Department of Transportation (DDOT) <i>No Parking</i> signs were temporarily removed. Can they be restored?</p>	<p>The contractor restored DDOT's <i>No Parking</i> signs on Thomas Street NW.</p>
<p>The developer and a utility company removed the tubular markers on the east side of 2nd Street at S Street, NW.</p>	<p>DC Water contractors will reinstall the tubular markers.</p>
<p>Various signs and posts are on the ground.</p>	<p>DC Water contractors have picked up these signs/posts which are often from another project in the area.</p>
<p>Resident complained of rattling noise/shaking inside her home which she stated, seemed to be coming from the 6th and R Streets construction site. She noted it was quite disruptive and was concerned about possible damage to her home. She asked if our team could do something to minimize the impact?</p>	<p>On March 3, 2022, the NEBT outreach sent a notification to affected R Street residents stating; while the bypass pump must remain in operation continuously through the weekend, steps would be taken such as erecting foam and wood barriers around the pump to further absorb sound and noise mitigation. The bypass pumping operation has since been completed.</p>
<p>The crew working on the tunnel project at 6th & R Streets NW are parking three cars on the lot behind the alley.</p>	<p>The DC Water contractor is leasing an upstairs office space on 6th Street and has been allotted 2 parking spaces for the project; however, the restaurant owner has allowed the team to occasionally have a third car park on the lot if it doesn't block the alley or sidewalk.</p>
<p>Some of the residents on R Street, NW were having issues with their trash cans being emptied.</p>	<p>The number of times DPW has missed trash on this street has raised concerns with the interim director of DPW. To effectively keep track of this issue, moving forward, the Director is requesting residents to use DC 311 to report missed trash pickup. Calling 311 directly or using the website will start a ticket for DPW to respond your issue. https://311.dc.gov/citizen/home</p>

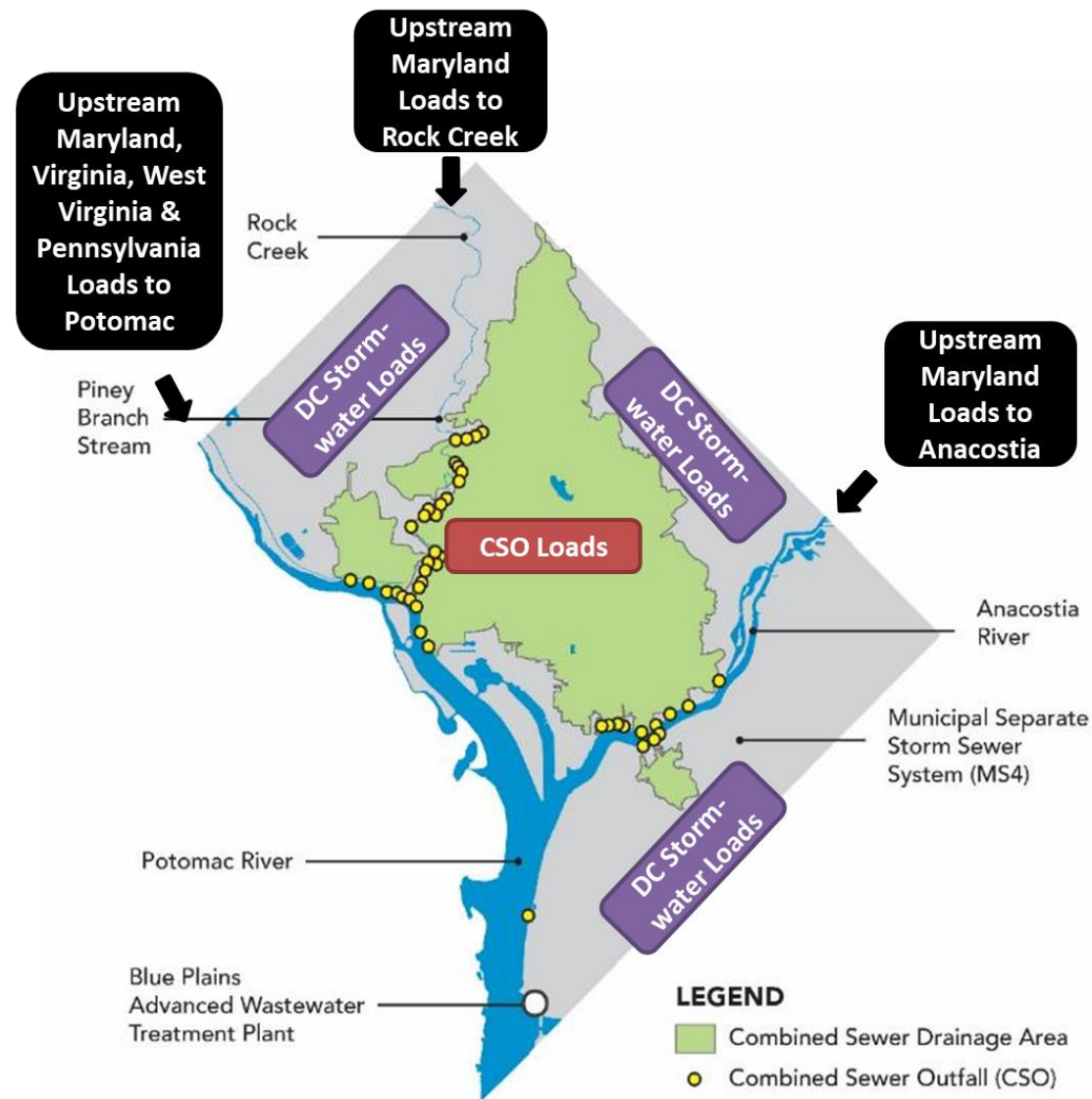
The CSO Problem and the Solution: What are we constructing? *(Bill Levy)*



DC Clean Rivers Project Background: Water Quality Benefits *(Bill Levy)*

Anacostia River CSO System

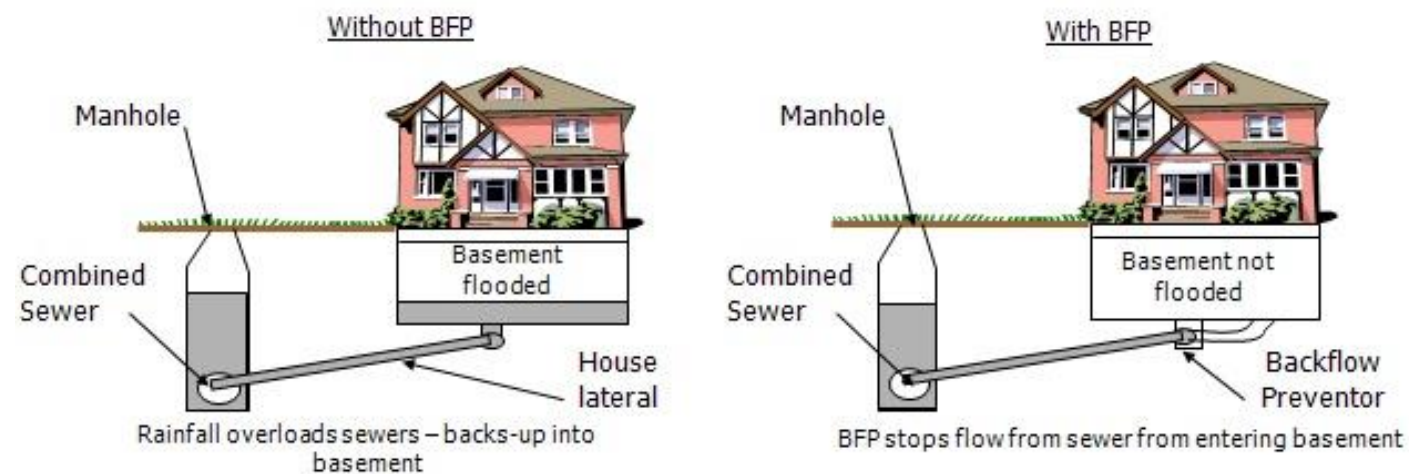
- Over **12.7 billion gallons** captured to date
- Over **8,019 tons of trash, debris, and other solids** captured
- Exceeding predicted capture rate (90% > 80%)
- First year in operation was the wettest year on record for the District of Columbia



* **CSO = Combined Sewer Overflows.**
Learn more at dcwater.com/css

Backwater Valve Information & Rebate Program Application *(Bill Levy)*

Backwater valves, also known as backflow prevention devices, are installed on a sewer lateral that connects the building to the public sewer in the street. A properly working backwater valve allows flow to go in only one direction (out), preventing wastewater from entering your building during surcharges of the public sewer system or back-ups caused by storms.



Please contact DC Water Community Outreach Manager: Emanuel Briggs (202) 787-2003, emanuel.briggs@dcwater.com for more information on the eligibility process and required documentation in support of the application.

Construction Site Updates

(Andrea Sesenna/Matt Wolniak)



First Street Pumping Station Construction Site: Work Overview *(Andrea Sesenna)*

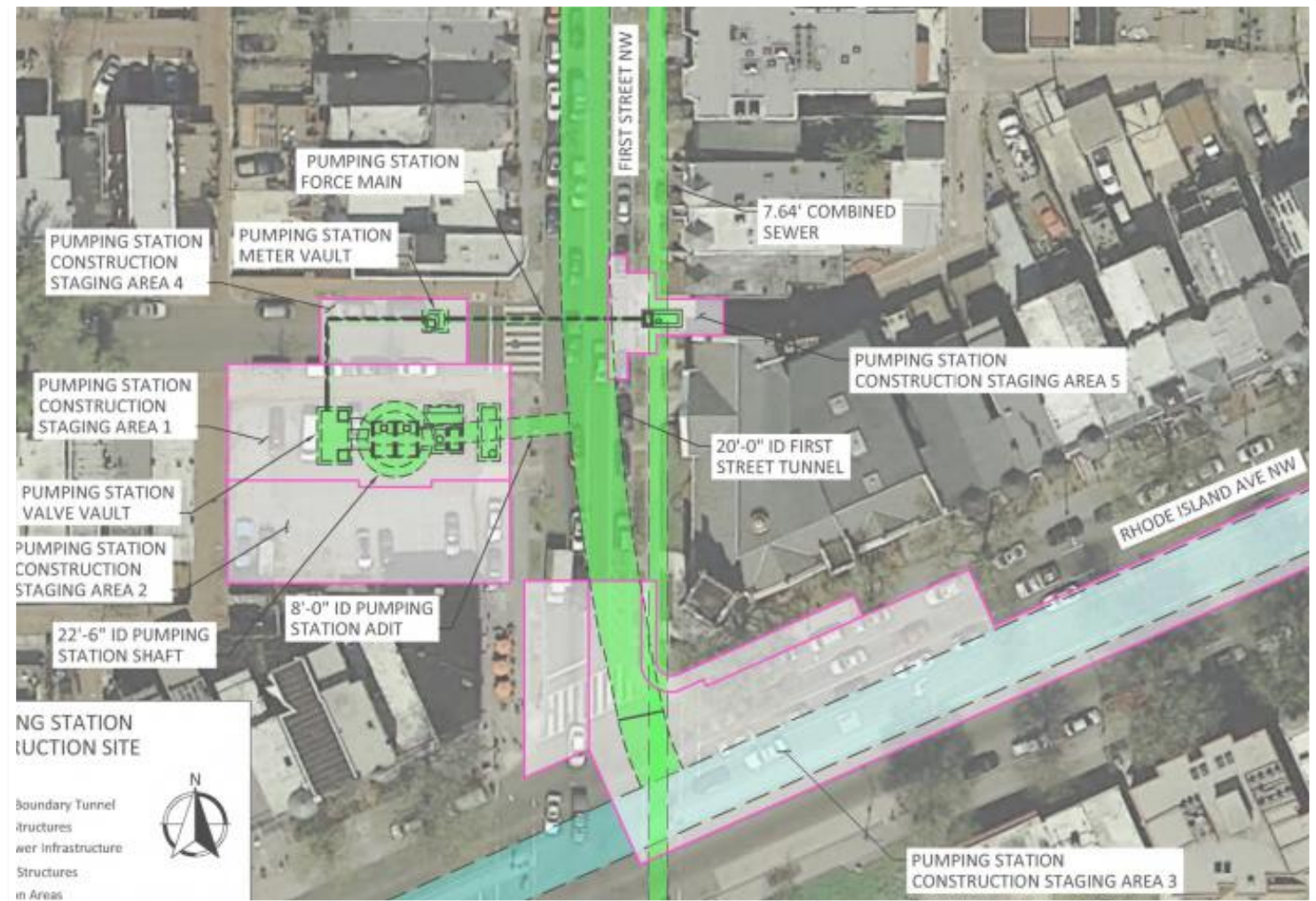
Current Activities: All construction activities are underground in the tunnel. Dismantling and remove the First Street Tunnel TBM. Adding a new lining is almost complete.

Next Activities: Connect the NEBT to the First Street Tunnel in November 2022.

Later: Demolition of the pump station in the Spring to Summer of 2023.

* The Construction End Date includes completing the restoration of the sidewalks and roadway.

CONSTRUCTION WORK HOURS	
Monday – Friday	7:00 AM to 7:00 PM
Saturday	7:00 AM to 5:00 PM
Construction End Date	Spring 2023



T Street NW Construction Site: Work Overview *(Andrea Sesenna)*

Current Activities: Removing the floodwall and secant piles around the approach channel and junction chamber. Installing the internal hydraulic structures inside the drop shaft. Excavating the ventilation vault.

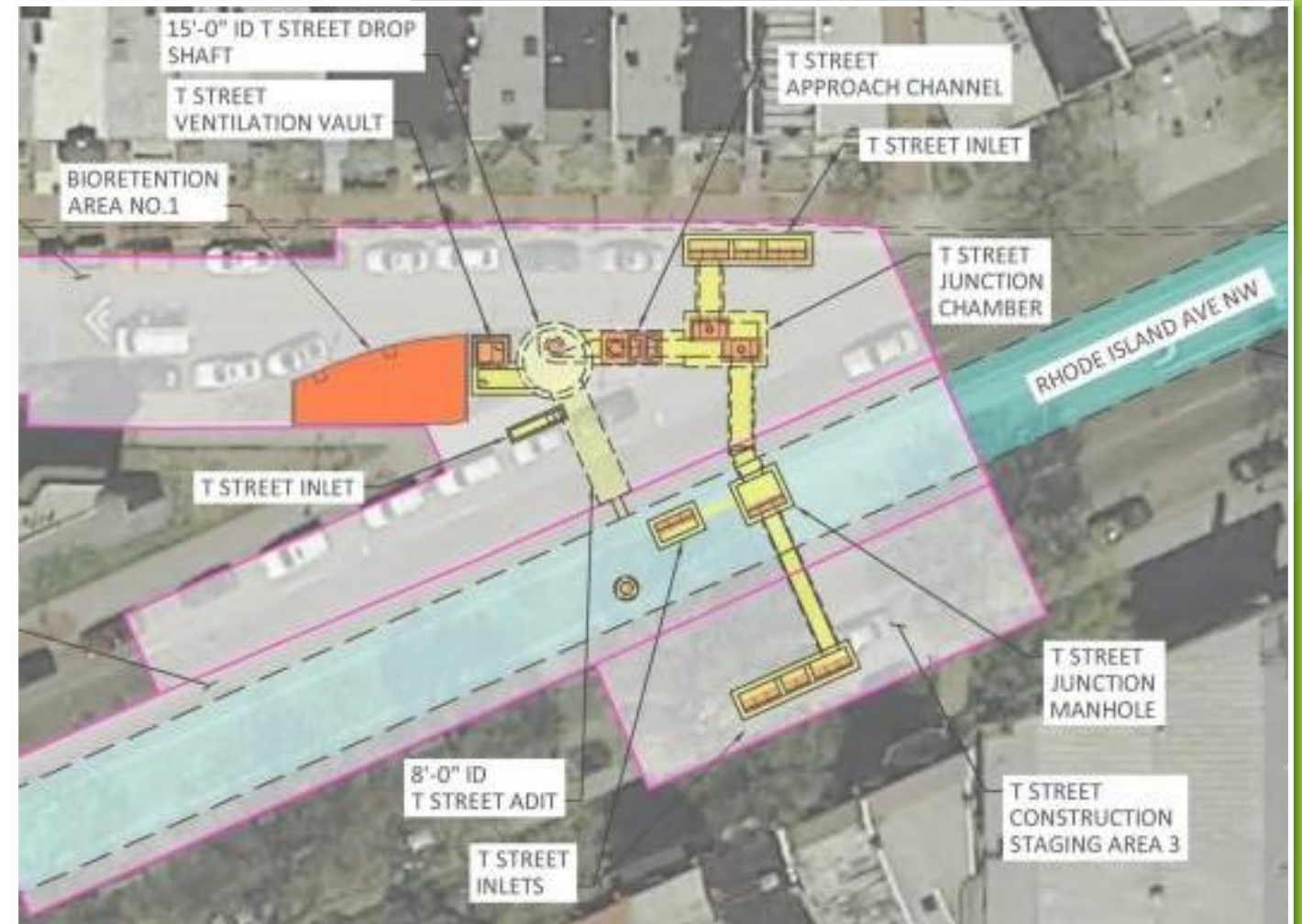
Next Activities: Applying temporary pavement to a portion of the 100-block of Rhode Island Avenue NW and adjusting the traffic pattern around the median area work to begin next week.

Later: Construct the median area inlet and junction manhole followed the by south side of Rhode Island Avenue inlet.

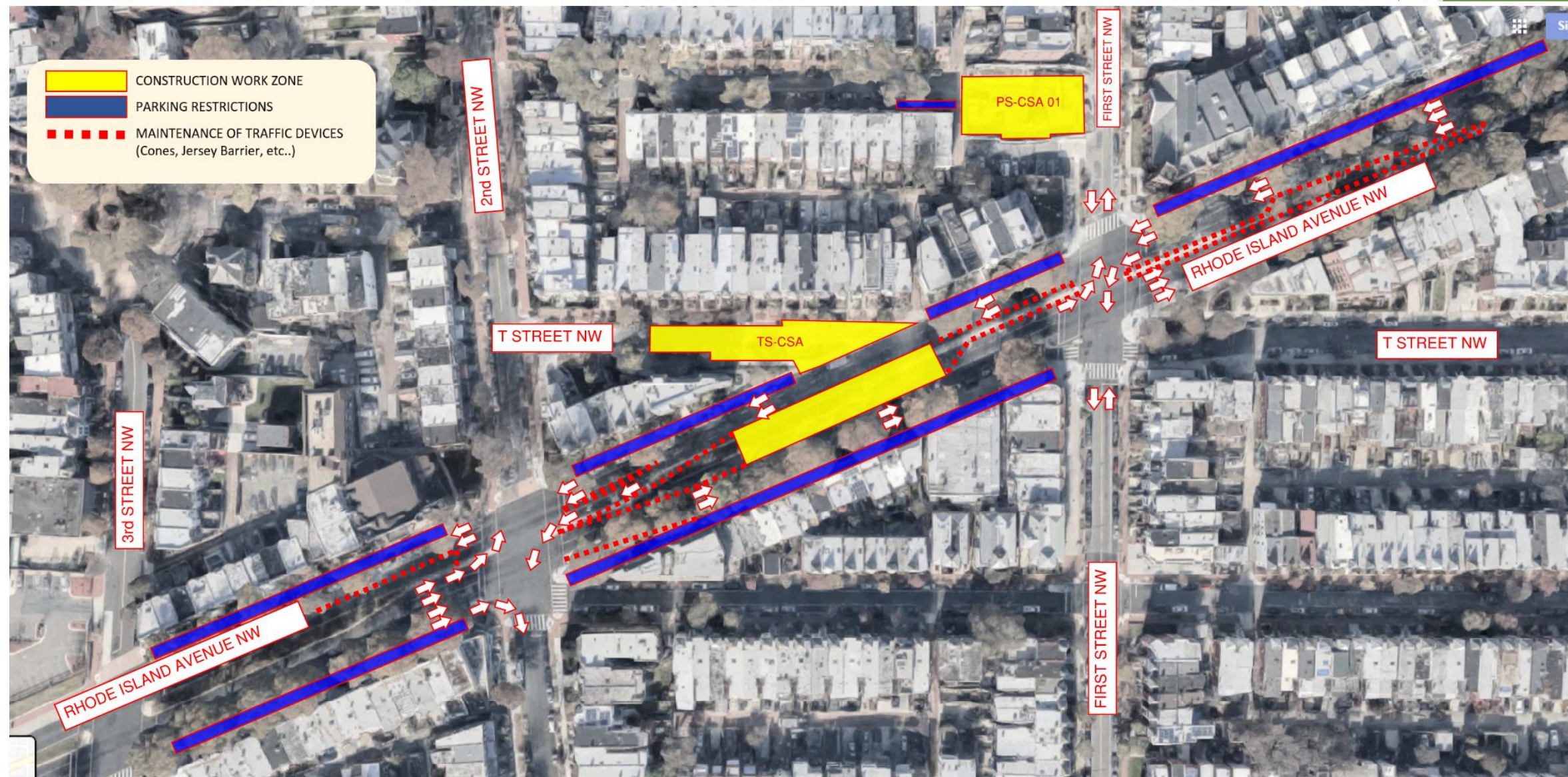
* The Construction End Date includes completing the restoration of the sidewalks and roadway.

CONSTRUCTION WORK HOURS

Monday – Friday	7:00 AM to 7:00 PM
Saturday	7:00 AM to 5:00 PM
Construction End Date *	Summer 2023



T Street NW Construction Site: Traffic Pattern Phase 8 *(Matt Wolniak)*



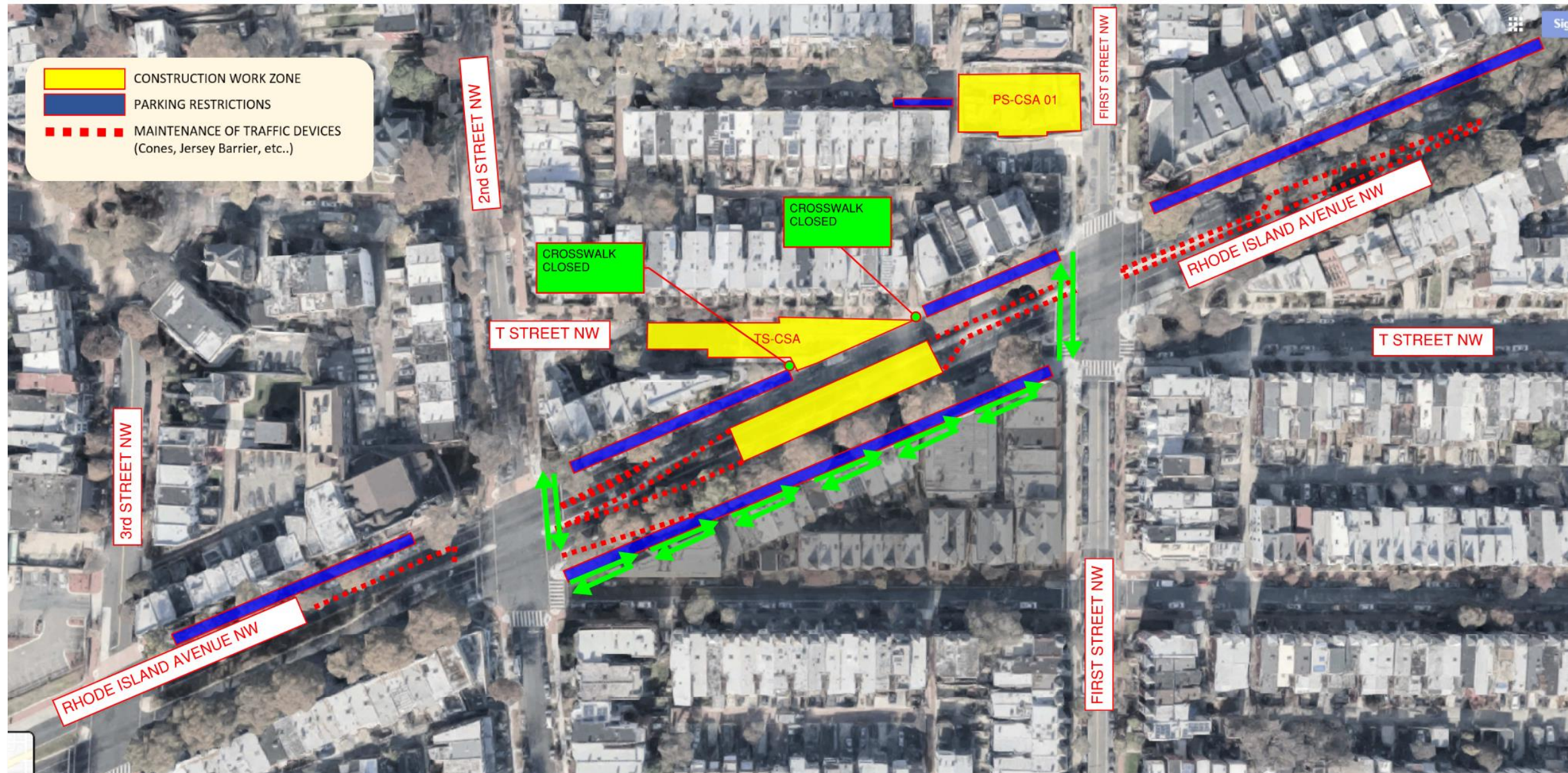
T STREET NW CONSTRUCTION SITE – TRAVEL LANES

MAIN IMPACT:

Travel is reduced to two lanes in each direction around the median area construction on the 100-block of Rhode Island Avenue NW. Parking restrictions are on each side of Rhode Island Avenue.



T Street NW Construction Site: Pedestrian Detour Phase 8 *(Matt Wolniak)*

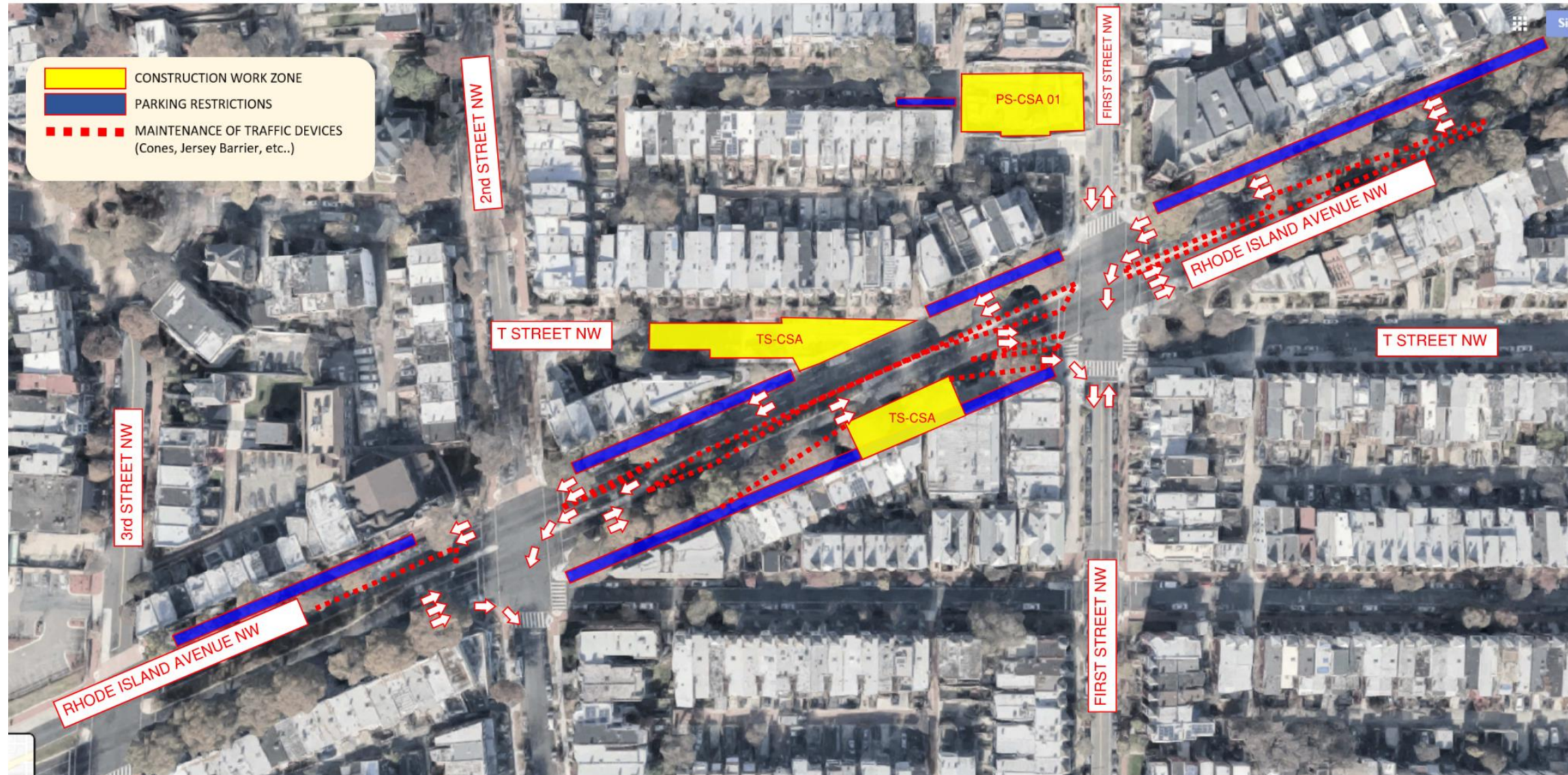


T STREET NW CONSTRUCTION SITE – PEDESTRIAN DETOUR

MAIN IMPACT: At T Street NW the crosswalk is closed at the westbound side of Rhode Island Avenue NW. **All crosswalks at First Street are open.** Pedestrians, please follow the detour signs.



T Street NW Construction Site: Traffic Pattern Phase 9A *(Matt Wolniak)*



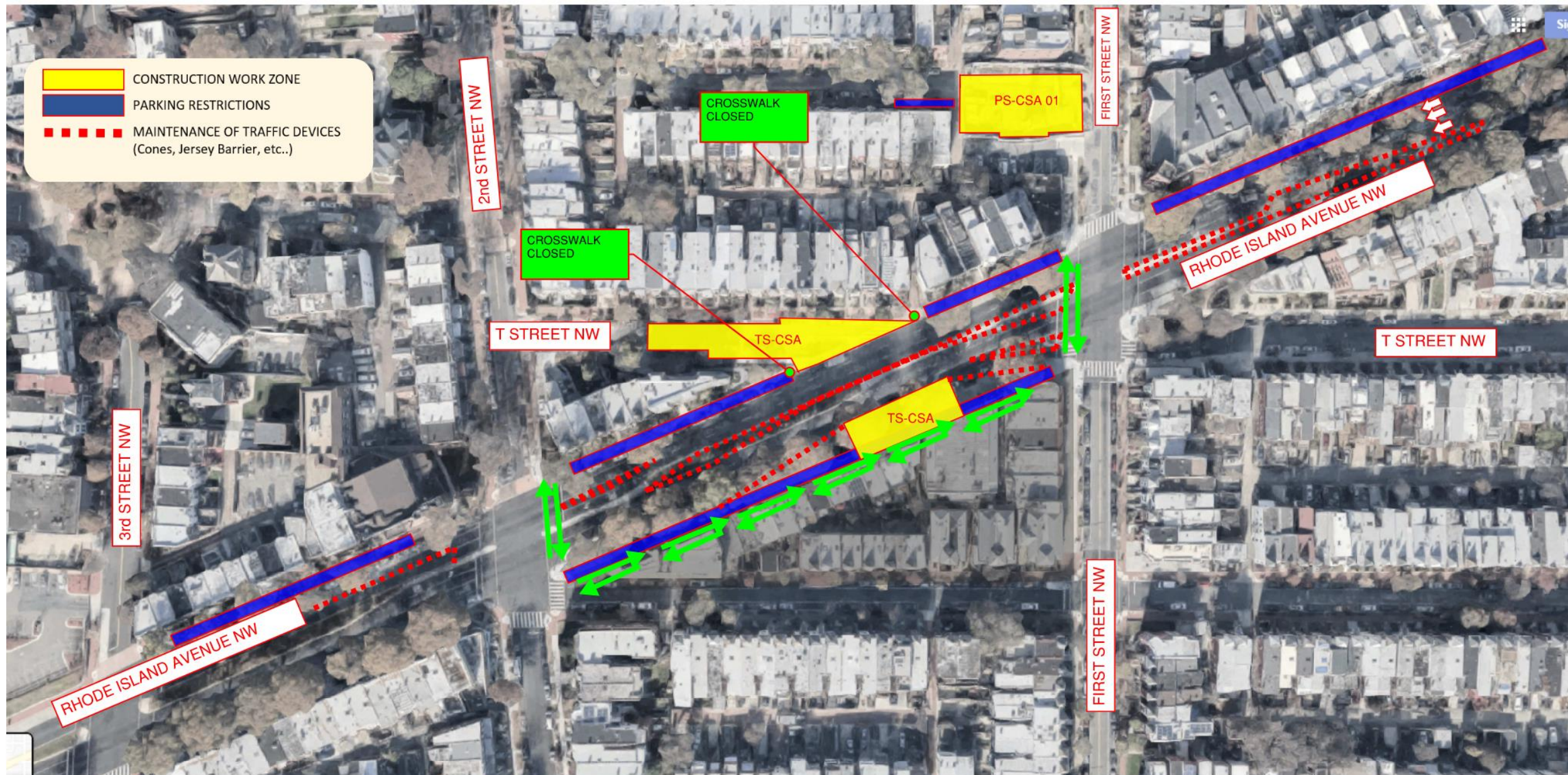
T STREET NW CONSTRUCTION SITE – TRAVEL LANES

MAIN IMPACT:

Travel is reduced to two lanes in each direction around the south side area construction on the 100-block of Rhode Island Avenue NW. The left turn from Rhode Island Avenue NW, eastbound to 1st Street NW, will be prohibited with traffic detoured to 2nd Street NW. Parking restrictions are on each side of Rhode Island Avenue.



T Street NW Construction Site: Pedestrian Detour Phase 9A *(Matt Wolniak)*



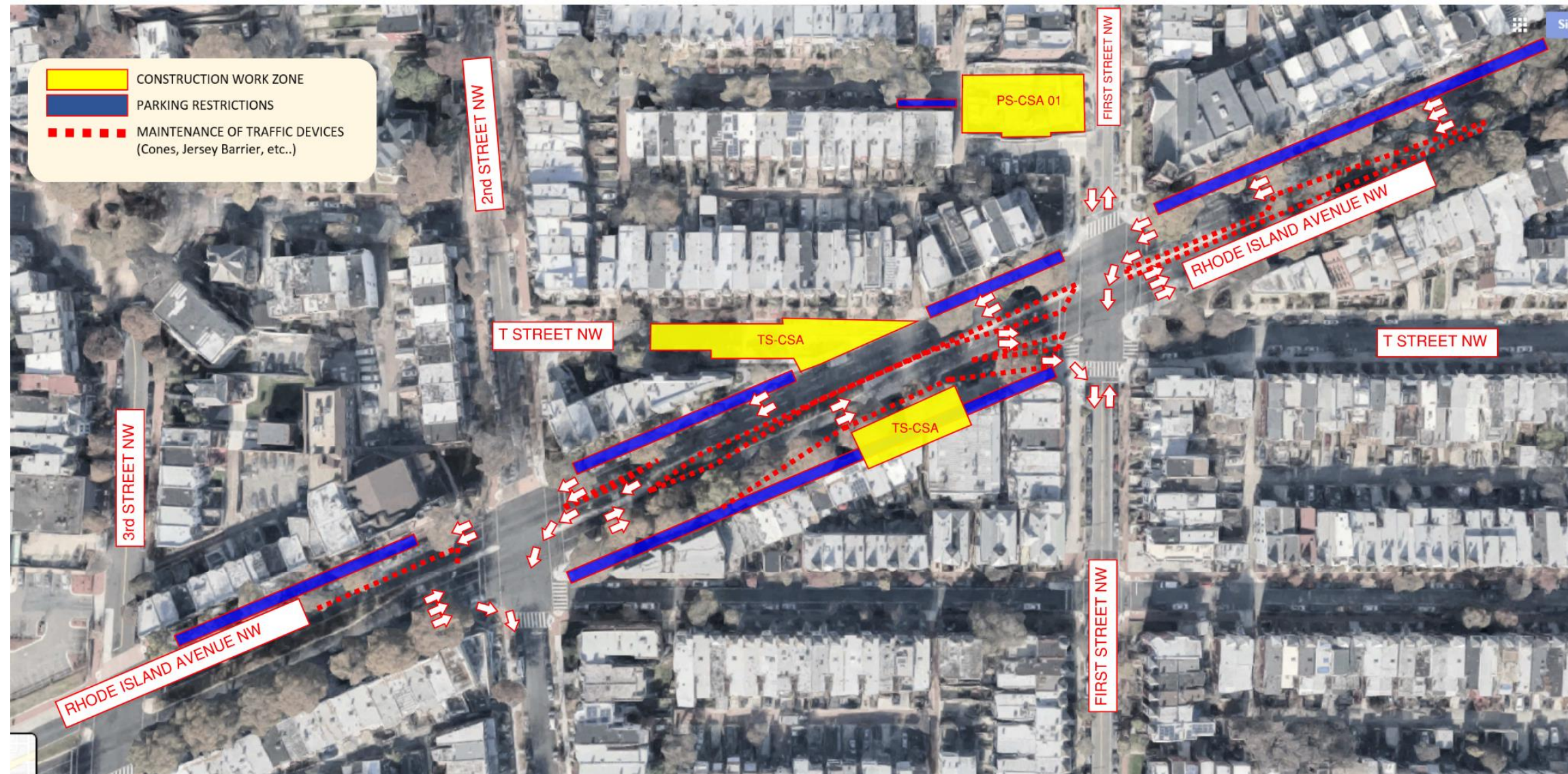
T STREET NW CONSTRUCTION SITE – PEDESTRIAN DETOUR

MAIN IMPACT:

At T Street NW the crosswalk is closed at the westbound side of Rhode Island Avenue NW. All crosswalks at First Street are open. Pedestrians, please follow the detour signs.



T Street NW Construction Site: Traffic Pattern Phase 9B *(Matt Wolniak)*



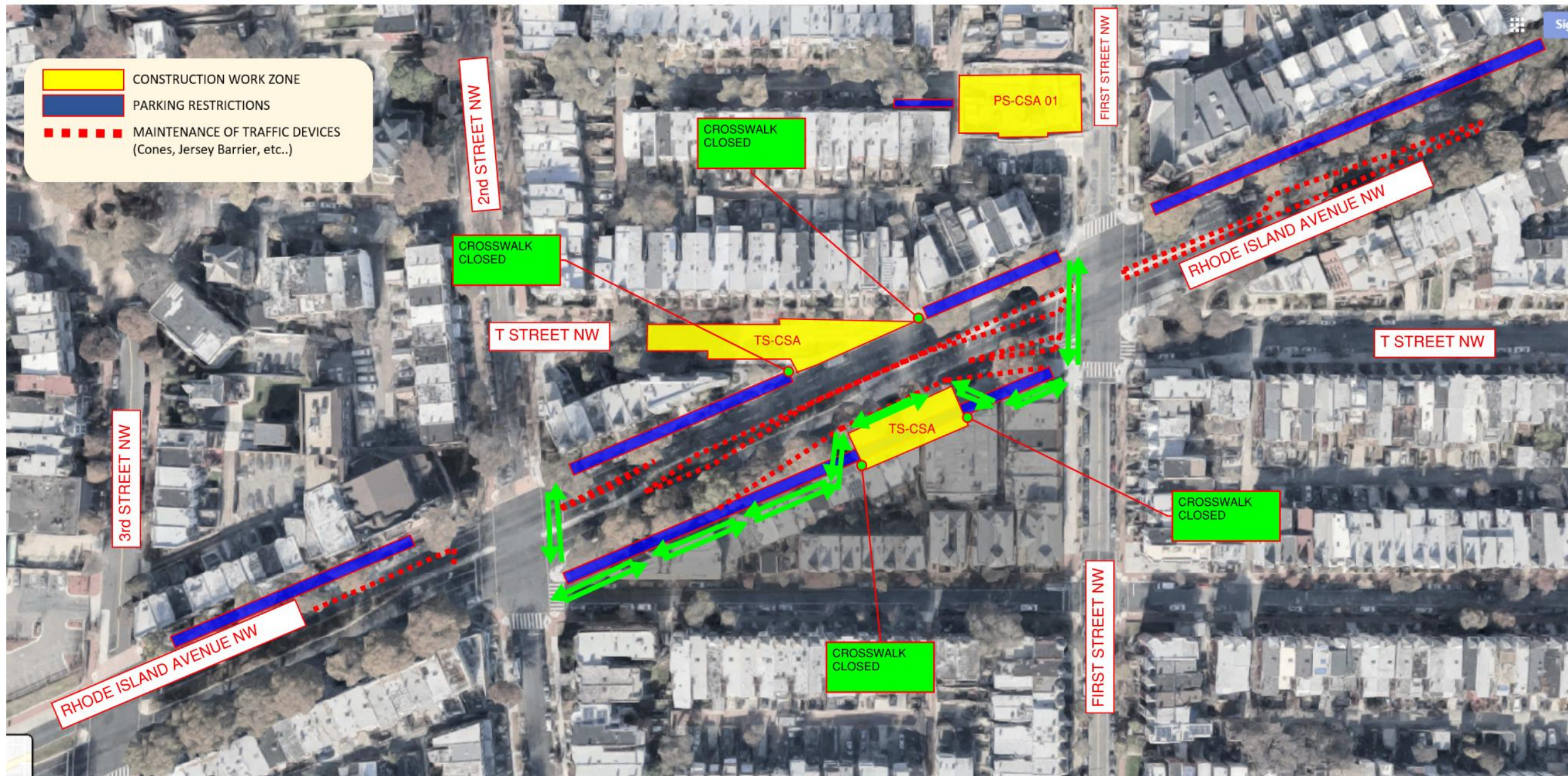
T STREET NW CONSTRUCTION SITE – TRAVEL LANES

MAIN IMPACT:

Travel is reduced to two lanes in each direction around the south side area construction on the 100-block of Rhode Island Avenue NW. The left turn from Rhode Island Avenue NW, eastbound to 1st Street NW, will be prohibited with traffic detoured to 2nd Street NW. Parking restrictions are on each side of Rhode Island Avenue.



T Street NW Construction Site: Pedestrian Detour Phase 9B *(Matt Wolniak)*



T STREET NW CONSTRUCTION SITE – PEDESTRIAN DETOUR

MAIN IMPACT:

At T Street NW the crosswalk is closed at the westbound side of Rhode Island Avenue NW. All crosswalks at First Street are open. Pedestrians, please follow the detour signs.



Florida Avenue NW Construction Site: Work Overview *(Andrea Sesenna)*

Current Activities: Excavation of the frozen ground and lining of the connection to the NEBT tunnel is underway. Noise monitoring indicates levels meet the DC statutory limits. Constructing the concrete roof for the approach channel. Demolishing portions of the secant piles surrounding the diversion chamber.

Next Activities: Temporarily repave Florida Avenue, NW and return traffic to two lanes in each direction. 3rd Street, NW, will remain closed between Florida Avenue, NW and Rhode Island Avenue, NW.

Later: Complete the drop shaft internal structures and approach channel tie-in. Excavate the ventilation vault.

* The Construction End Date includes completing the restoration of the sidewalks and roadway.

CONSTRUCTION WORK HOURS	
Monday – Friday	7:00 AM to 7:00 PM
Construction End Date	Fall 2022



Florida Avenue NW Construction Site: Traffic Pattern *(Matt Wolniak)*



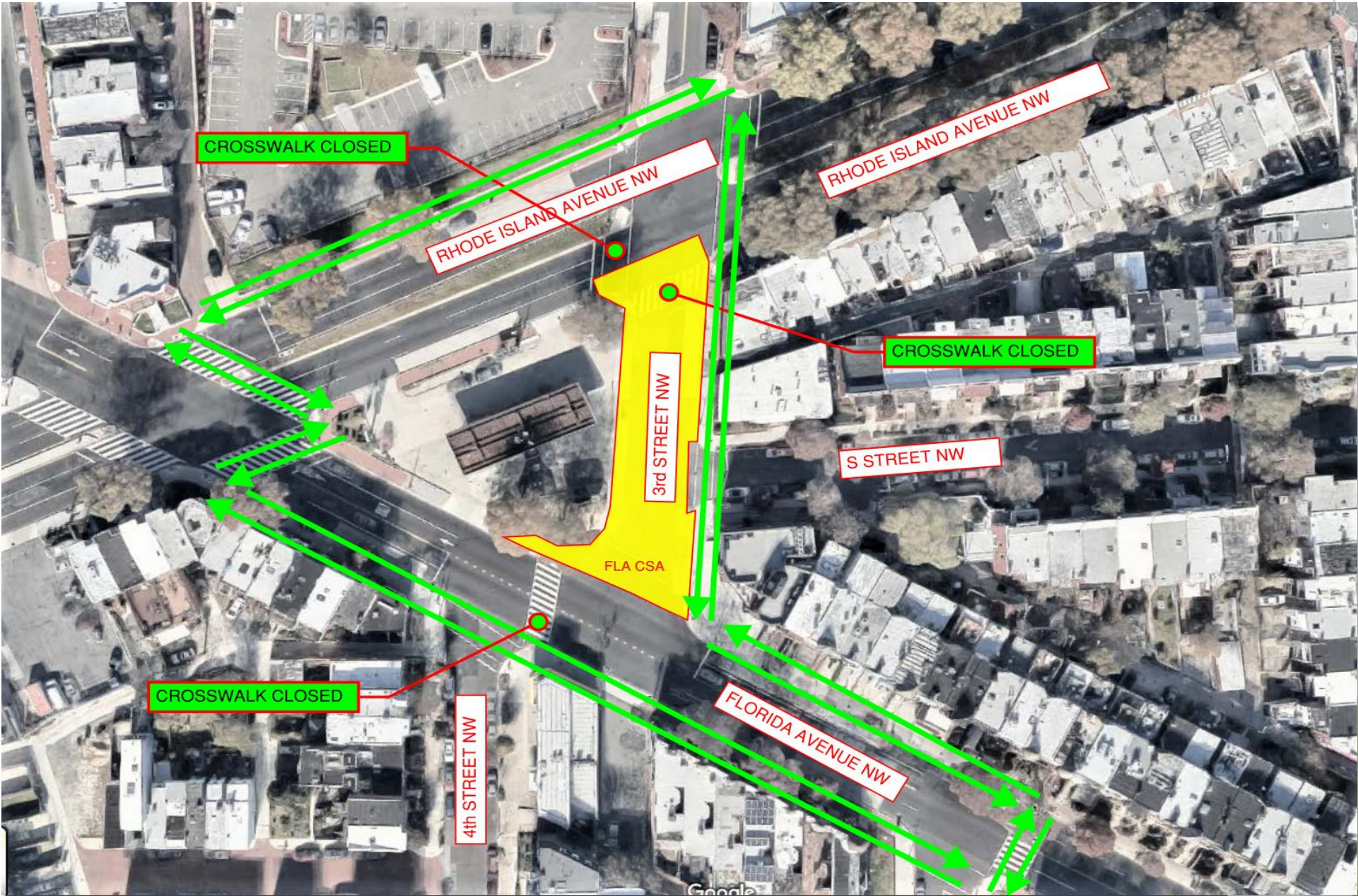
FLORIDA AVENUE NW CONSTRUCTION SITE – TRAVEL LANES

MAIN IMPACT:

Traffic will travel in two lanes eastbound on Rhode Island Avenue between New Jersey Avenue and North Capitol Street NW. Southbound traffic on the 1800-block of 3rd Street will be able to make right turns onto Rhode Island Avenue.



Florida Avenue NW Construction Site: Pedestrian Detour *(Matt Wolniak)*



FLORIDA AVENUE NW CONSTRUCTION SITE – PEDESTRIAN DETOUR

MAIN IMPACT: East crosswalk open at Rhode Island Avenue NW at 3rd Street NW. Crosswalk closed at Florida Avenue NW between 3rd Street and 4th Street. **Pedestrians, please follow the detour signs.**



R Street NW Construction Site: Work Overview *(Andrea Sesenna)*

Current Activities: Completing the diversion chamber and approach channel. Constructing the hydraulic structure inside the drop shaft. Supporting the tunnel crew.

Next Activities: Remove the large crane from the site and replace it with a smaller crane. The smaller crane will install drilled soldier piles for temporary support of excavation. Backfill the diversion chamber and approach channel.

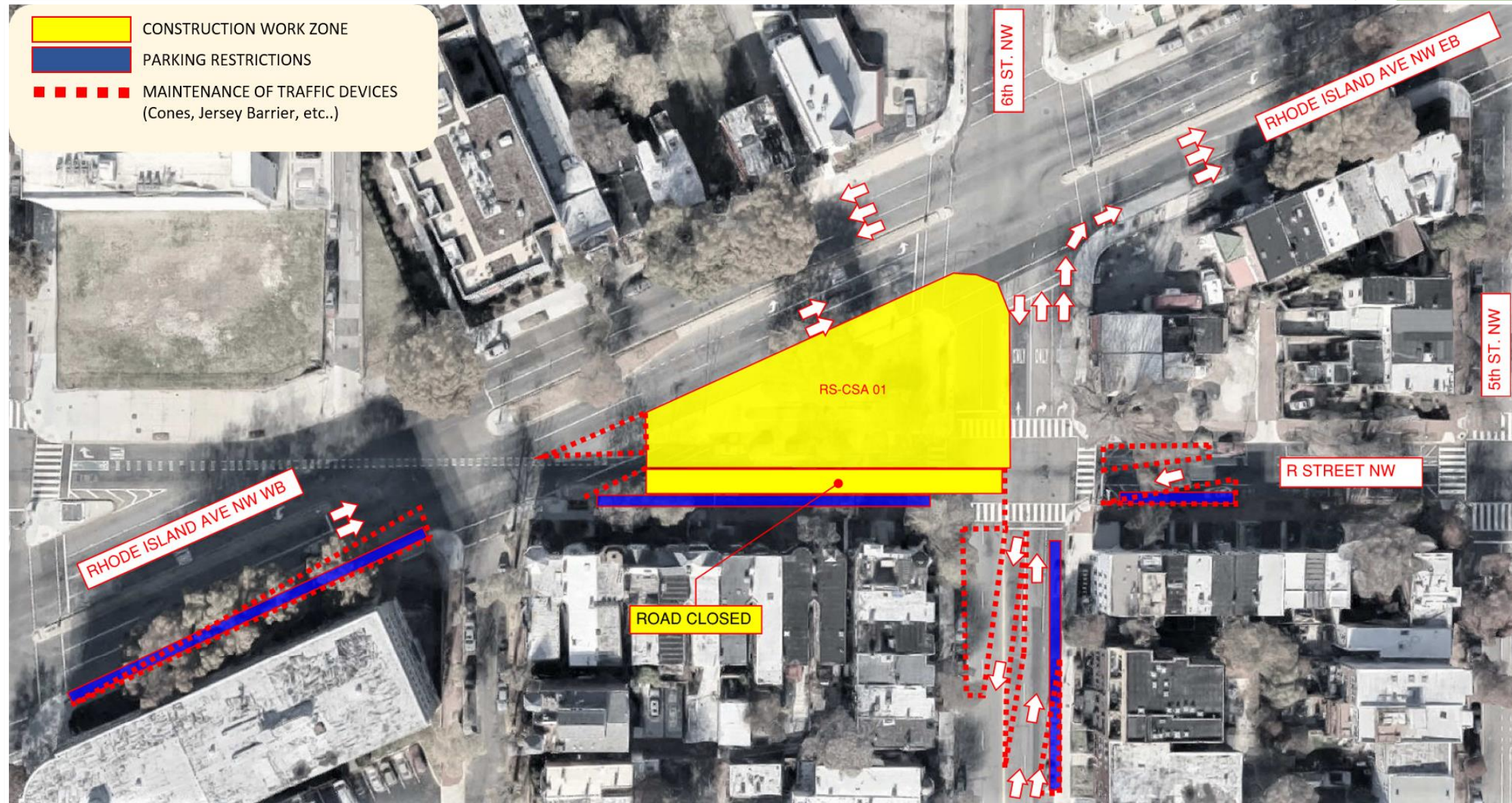
Later: Excavate the ventilation control vault.

* The Construction End Date includes completing the restoration of the sidewalks and roadway.

CONSTRUCTION WORK HOURS	
Monday – Friday	7:00 AM to 7:00 PM
After-Hours	7:00 PM to 3:00 AM
Saturday	7:00 AM to 5:00 PM
Construction End Date	Spring 2023

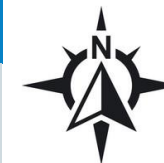


R Street NW Construction Site: Traffic Pattern *(Matt Wolniak)*



R STREET NW CONSTRUCTION SITE – TRAVEL LANES

MAIN IMPACT: Reduction and shifting of travel lanes on 6th Street. One lane closure on Rhode Island Ave NW eastbound. R Street NW westbound traffic is detoured. **Bike lane remains open through R Street NW.**



R Street NW Construction Site: Traffic Detour *(Matt Wolniak)*



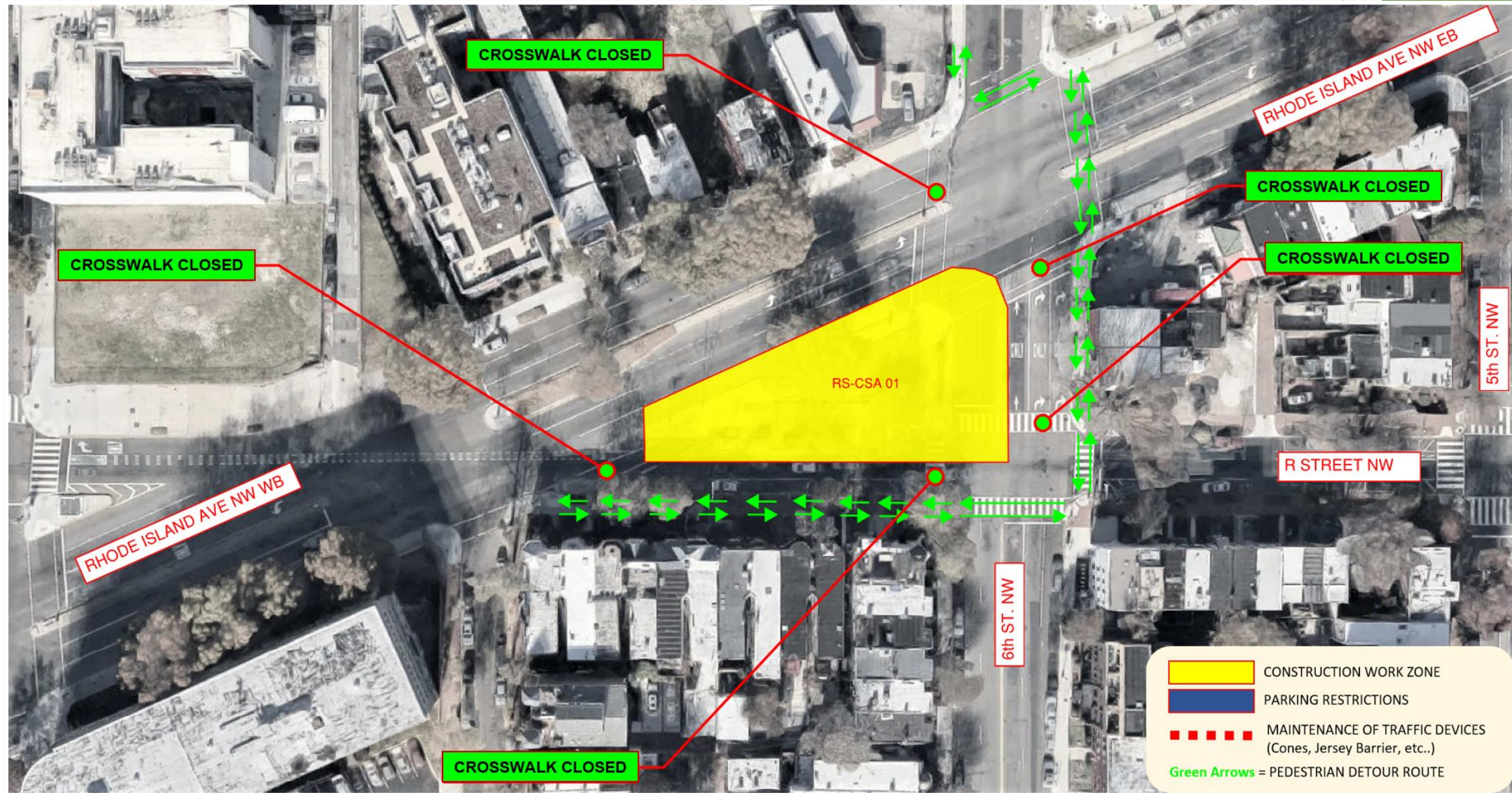
R STREET NW CONSTRUCTION SITE – TRAVEL LANES

MAIN IMPACT:

Westbound traffic on R Street is detoured to P Street NW. Please follow all detour signs.



R Street NW Construction Site: Pedestrian Detour *(Matt Wolniak)*



R STREET NW CONSTRUCTION SITE – PEDESTRIAN DETOUR

MAIN IMPACT:

Crosswalk closed at Rhode Island Avenue NW and 6th Street NW intersections and on 6th Street and R Street NW intersection. **Pedestrians, please follow the detour signs.**



NEBT Claims Process *(Hadiah Jordan)*

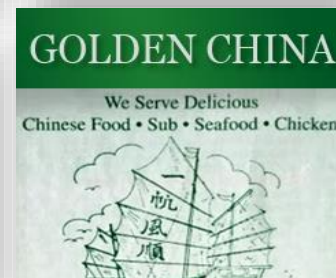
- If you are a property owner and you believe that construction activities undertaken as a result of this project have damaged your property in some way, you may send an email to dccleanrivers@dcwater.com or call the Hotline at 800-988-6151.
- A representative of the contractor, SIH, will contact you to receive the information for the claim. A claim will be initiated on your behalf and a copy will be transmitted to you. Further communications about the claim will occur between the property owner and DC Water's insurance company.
- The claim receives a claim number, and an adjuster investigates.
- It is recommended that when you see damage, report it.

Support Local Businesses During Construction

(Bill Levy)



MEATS ^{A_ND} FOODS
247 FLORIDA AVE NW - WASH. DC



Main Streets Contact Information *(Bill Levy)*

DC Water continues to partner with the Main Street organizations to work with businesses impacted by the Northeast Boundary Tunnel Project.



Alexander M. Padro, Executive Director

**875 N Street NW
Washington, DC 20001**

**202-265-SHAW
info@shawmainstreets.org
shawmainstreets.org**



Aisha Bond, Esq., Executive Director

Office Location:

22 Quincy Place, NW
Washington, D.C. 20001

Mailing Address:

P.O. Box 29068, Washington, D.C. 20002

**202-409-6485
info@northcapitoldc.com
northcapitoldc.com**

NEBT Contact Information



- Send your questions to:
dccleanrivers@dcwater.com
- Call our 24/7 NEBT Hotline:
(800) 988-6151
- Visit the NEBT Website:
dcwater.com/NEBT
- To receive e-newsletters send your email to dccleanrivers@dcwater.com



We will acknowledge questions from participants who are online and on the phone.

- **ONLINE PARTICIPANTS:** send your questions to the Host by using the Chat mode. You may also click on “Participants” to raise your hand for a question.
- **PHONE PARTICIPANTS:** press *9 to alert us that you want to ask a question. We will unmute you when it’s your turn to ask a question.