

*Clean Rivers Project
Northeast Boundary Tunnel*

Tunnel Forum Meeting

WELCOME NEIGHBORS!

April 11, 2019

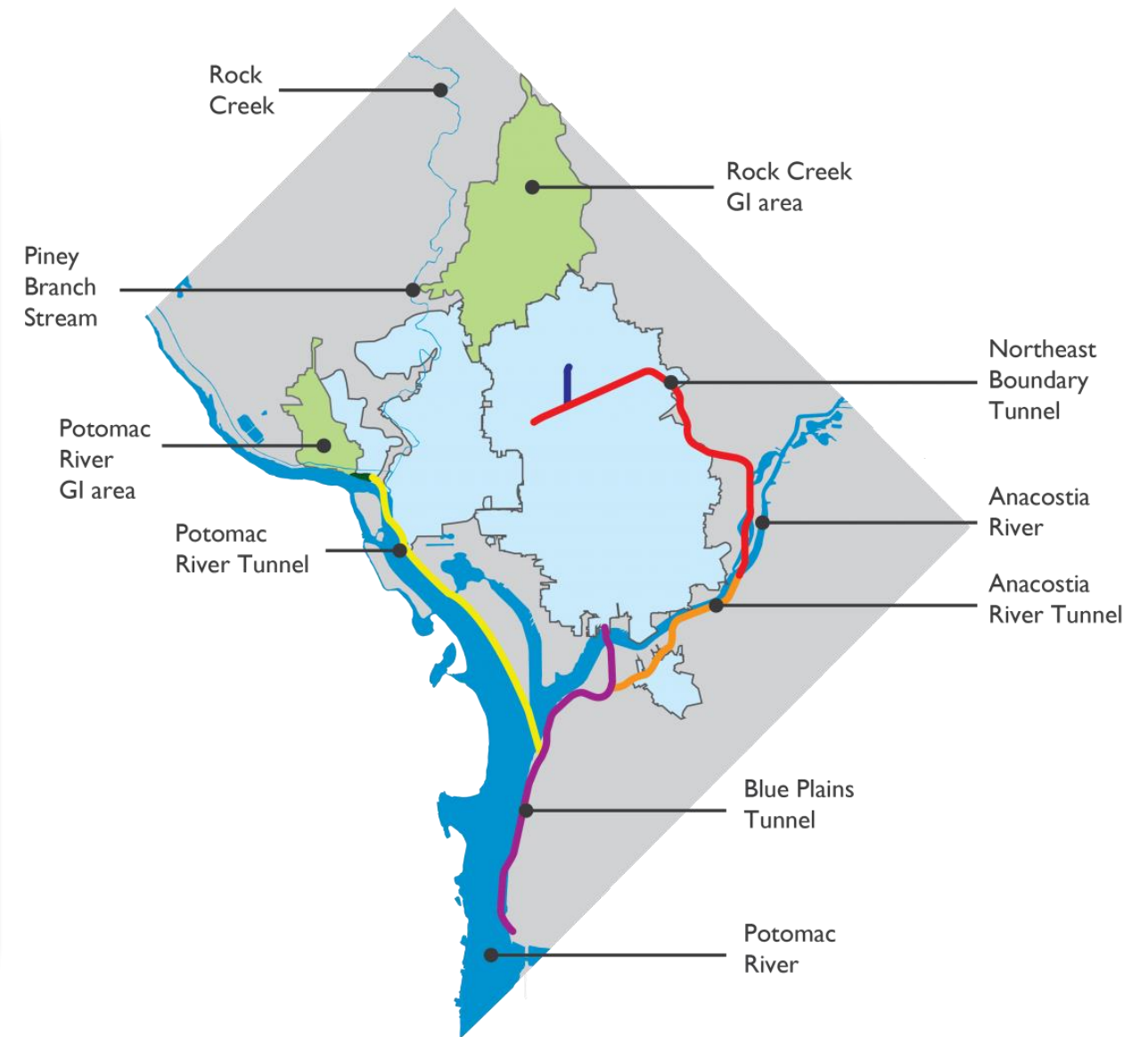
Welcome!



Tunnel Success

DC Water opened the first 7-mile segment of the Anacostia River Tunnel system in March 2018. This massive structure stores combined sewage during rain events, keeping sewage from overflowing to the river.

- From March through December 31, 2018, the tunnel prevented 4.57 billion gallons of sewage, and nearly 900 tons of trash, solids and debris, from entering the Anacostia River.
- The Northeast Boundary Tunnel will add approximately 90 million gallons of storage when it is placed into service in 2023.



Agenda

- **Welcome**
- **NEBT Outreach and Tunnel Forum Member Recruitment**
- **Responses to March 14th Tunnel Forum Concerns**
- **Bryant Street Alternative Parking Area**
- **Construction Sites Schedules**
 - **First Street NW Pumping Station**
 - **Florida Avenue NW**
 - **R Street NW**
- **Local Business Partnership with North Capitol Main Street**
- **Questions**

Note: Return your comment sheets to the front desk.

Responses to March 14th Tunnel Forum Concerns

CONCERN	RESPONSE
Uber like or shuttle service between Bryant Street APA and residents' homes.	Uber service between the Bryant Street APA and eligible addresses is approved for residents who have registered for the APA.
Does NEBT traffic study consider the expansion of Howard University housing and other local development and future parking needs?	The 2016 study took into consideration Howard University plans at that time. Since that time new plans have gone forward.
Reaching ALL affected community stakeholders in our outreach efforts.	We will prepare mailings to residents near the construction site areas.
Temporary suspension of street cleaning during construction.	This was arranged during the First Street Tunnel construction. We will work with the Tunnel Forum to temporarily suspend street cleaning during construction.
Closure of 3 rd Street NW: lack of access to the alleyway behind their homes, as well as lack of access to the alleyway for trash pickup	DPW will use a small truck allowing them to back out of the alley.
Traffic calming measures: signal timing, calm alley speeding Increased traffic on side streets as traffic is rerouted due to street closures.	We will monitor traffic and speeds in the neighborhood. Possible traffic calming measures include speed humps, speed trailers and narrowing of lanes to lower speeds. We can also work with MPD for enforcement.
Detailed summary of local road closures and durations.	The construction site updates will detail the travel restrictions, including road closures and parking restrictions along with the durations.
Notification timing	The construction site updates provide work sequence as a y look ahead for 2019 along with anticipated dates that work will begin.
Coordination with DC Health for vector control	Robust vector control is already required for to be implemented by SIH. Upon feedback from Tunnel Forum Members and working with the ANCs that range can be extended with the assistance of the Dept of Health.
Media Outreach Plan	The Commuter Outreach Plan includes radio advertising that directs listeners and readers to the project website hotline for more project information.

Tunnel Forum Recruitment

Construction Site	Representative	Alternate
First Street Pumping Station		
T Street		
Florida Avenue		
R Street		
Bloomingdale Civic Association		
Advisory Neighborhood Commissioners		
Local Blogs		

Tunnel Forums are reoccurring, collaborative meetings to share information about the project, gather community input, and collectively resolve issues while building relationships.

Participants Drive Solutions!

Get Involved to:

- Learn about what is happening
- Ask questions
- Provide feedback
- Get results!

Sign up today to be a member!

Contact Us:

NEBT Outreach Team: Hadiah Jordan, dccleanrivers@dcwater.com

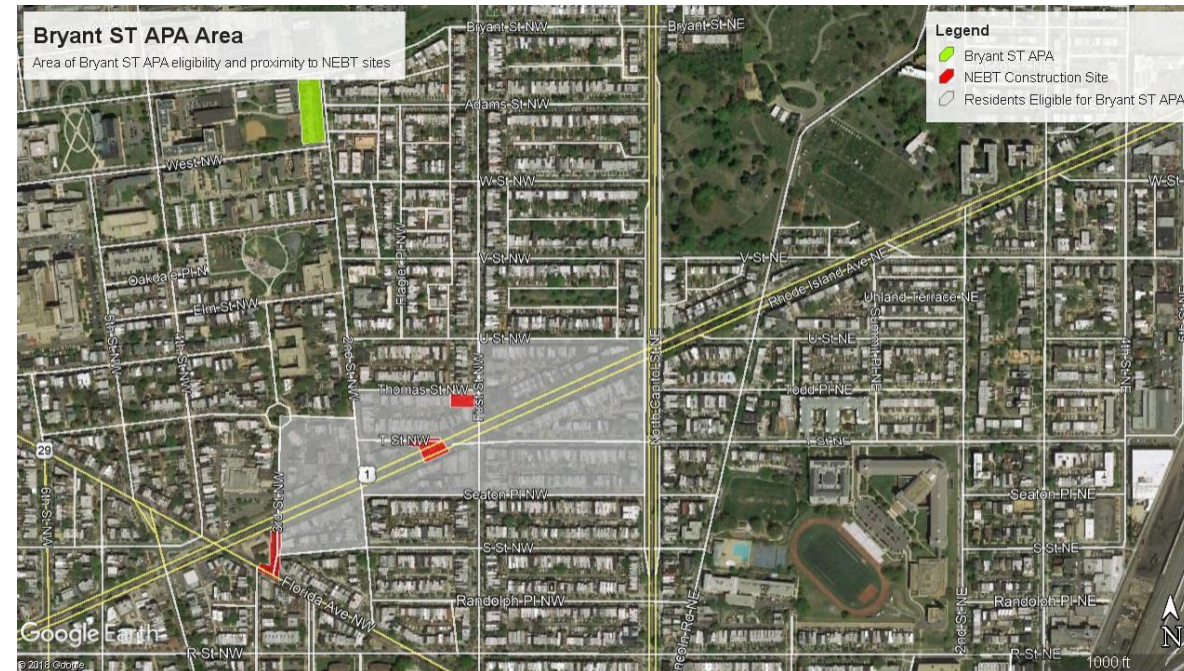
Northeast Boundary Tunnel Project: dcwater.com/NEBT

24/7 NEBT Hotline: 1-800-988-6151



Update on Bryant Street Alternative Parking Area (APA)

- Security guards posted at the APA
- Uber service has been approved for residents with parking permits to move between the APA and their registered address.



First Street NW Pumping Station Construction Site

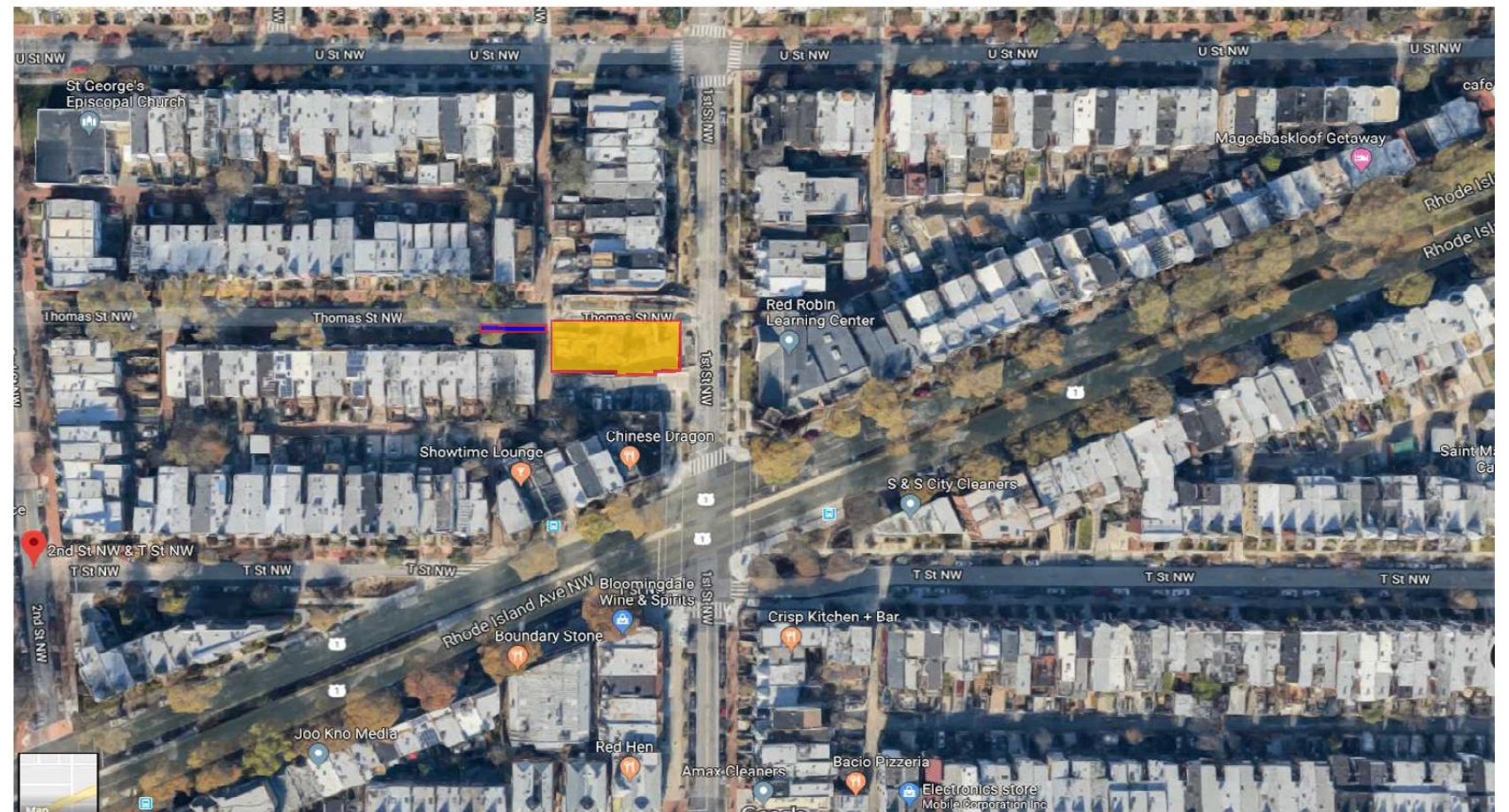
Construction Site Work Sequencing Overview

APRIL 2019 – DECEMBER 2019

- Mobilization on Site/Site Preparation
- Install Geotechnical and Monitoring Instrumentation
- Median Removal
- Jet Grout / Ground Improvement

PUMP STATION – FIRST STREET	
MOT PHASE:	Phase 1.A - Mobilization
DURATION:	Approximately 5 weeks
MAIN IMPACT:	Pedestrian Detour

-  WORK ZONE
-  PARKING RESTRICTION
-  CHANNELIZING DEVICES



All construction dates are approximate and could change.

First Street NW Pumping Station Construction Site

Rhode Island Avenue NW Median Removal

Phase 1: The contractor will remove the median on Rhode Island Avenue NW **between 2nd Street NW and First Street NW** to prepare for detours and lane shifts. **Expected begin date, 4/17/19. Duration—2.5 weeks.**

Travel and Parking Restrictions:

Traffic on Rhode Island Avenue will be reduced from three lanes to two lanes and 24-hour parking restrictions will be in place:

- **The Eastbound side of Rhode Island Avenue NW** between 3rd Street NW and First Street NW.
- **The Westbound side of Rhode Island Avenue NW** between North Capitol Street NW and 2nd Street NW.

PUMP STATION – FIRST STREET	
MOT PHASE:	Phase 1.B – Median and Tree Removal West Boundary
DURATION:	Approximately 2 weeks
MAIN IMPACT:	One Lane Closure in Rhode Island AV NW East Boundary and West Boundary



First Street NW Pumping Station Construction Site

Rhode Island Avenue NW Median Removal

Phase 2: The contractor will remove the median along Rhode Island Avenue NW **between First Street NW and North Capitol Street**. Expected begin date, beginning of May 2019. *Duration—2.5 weeks.*

Travel and Parking Restrictions:

Traffic on Rhode Island Avenue will be reduced from three lanes to two lanes and 24-hour parking restrictions will be in place:

- **The Eastbound side of Rhode Island Avenue NW** between 2nd Street NW and North Capitol Street NW .
- **The Westbound side of Rhode Island Avenue NW** between North Capitol Street NW and First Street NW.

PUMP STATION – FIRST STREET	
MOT PHASE:	Phase 1.C – Median and Tree Removal East Boundary
DURATION:	Approximately 2 weeks
MAIN IMPACT:	One Lane Closure in Rhode Island AV NW East Boundary and West Boundary

-  WORK ZONE
-  PARKING RESTRICTION
-  CHANNELIZING DEVICES



First Street NW Pumping Station Construction Site

Tree Replanting Plan

When NEBT construction is complete, the medians will be restored and new trees will be planted.

Willow Oak



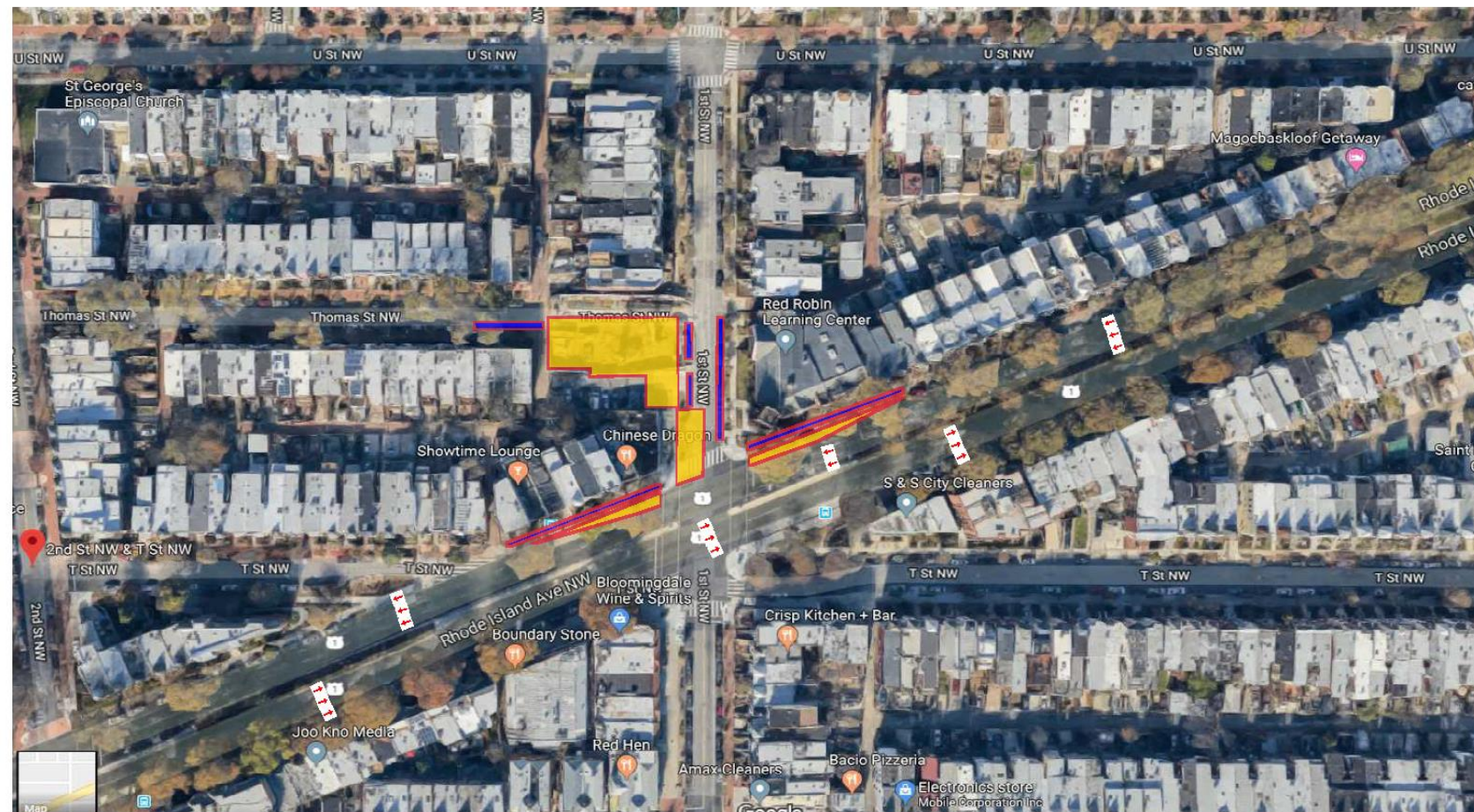
© Robert O'Brien

First Street NW Pumping Station Construction Site

Jet Grout Installation

PUMP STATION – FIRST STREET	
MOT PHASE:	Phase 2 – Preparation for Jet Grouting
DURATION:	Approximately 3 weeks
MAIN IMPACT:	Restriction Northbound Traffic in 1 st Street and Traffic Detour

-  WORK ZONE
-  PARKING RESTRICTION
-  CHANNELIZING DEVICES



Jet grouting is a construction method for ground improvement or soil stabilization. *Work is expected to begin in May 2019. Duration—3 weeks.*

Travel Restrictions:

- Northbound traffic will be closed on First Street between Rhode Island Avenue and Thomas Street NW.

24-Hour Parking Restrictions:

- Parking will be restricted on the westbound side of Rhode Island Avenue NW near the intersection of First Street NW. Parking will also be restricted on First Street NW between Thomas Street NW and Rhode Island Avenue NW.

All construction dates are approximate and could change.

First Street NW Pumping Station Construction Site

Jet Grouting

The contractor will install jet grout columns at the intersection of First Street NW and Rhode Island Avenue NW. We will update you when Phase 3 work is expected to begin. *Duration—6 weeks.*

Travel and Parking Restrictions:

- Rhode Island Avenue NW between 2nd Street NW and North Capitol Street will be reduced to two lanes of traffic in each direction.
- 24-Hour parking restrictions will be in place on the eastbound and westbound sides of Rhode Island Avenue NW between North Capitol Street and 2nd Street NW.



All construction dates are approximate and could change.

First Street NW Pumping Station Construction Site

Monitoring Noise and Vibration

- 24-hour noise and vibration meter continuously uploads data to our server for review
- The noise and vibration specialist checks meter regularly
- Meters are programmed with an alarm that when triggered, the specialist and others on the team, receive a notification
- Determine if alternative construction methods or additional mitigation is required based on meter readings
- A portable meter is available if a resident informs us of excessive noise or vibration impacts

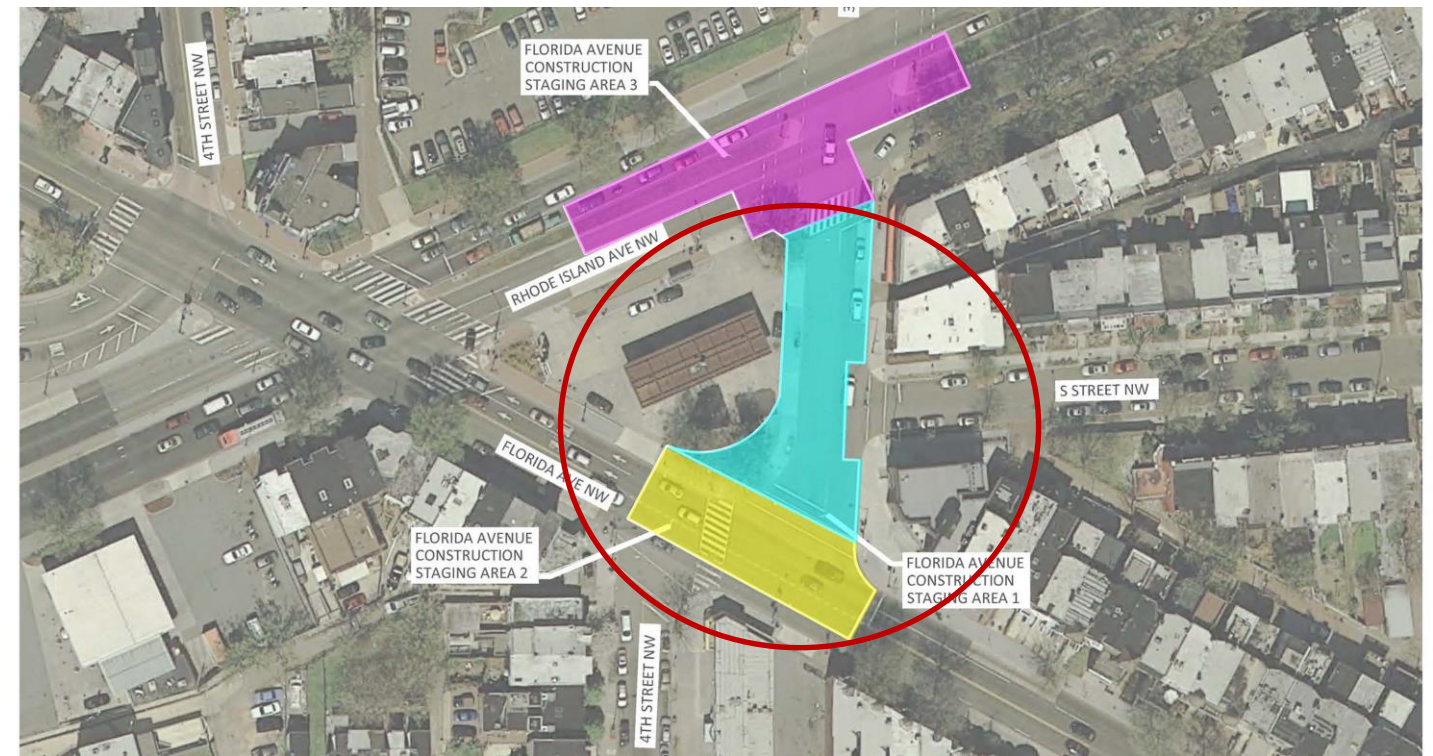


Florida Avenue Construction Site

Construction Site Work Sequencing Overview

APRIL 2019 – AUGUST 2019

- Utility Location
- Mobilization on Site
- Remove portions of Florida Avenue sidewalk
- Install Secant Piles for Shaft and Near Surface Structures



Florida Avenue Construction Site Utility Location

FLORIDA AVENUE	
MOT PHASE:	Field Survey Phase 3
DURATION:	Approximately 2.5 weeks
MAIN IMPACT:	One lane closure in 3 rd Street between Rhode Island Av. and Florida Av.

-  WORK ZONE
-  PARKING RESTRICTION
-  CHANNELIZING DEVICES



Utility location work is located on the east side of 3rd Street NW between Rhode Island Avenue NW and Florida Avenue NW. *Duration—2.5 weeks.*

Travel Restrictions:

- 3rd Street will remain open to traffic with one lane closed and the sidewalks will remain open to pedestrians.

Florida Avenue NW Construction Site

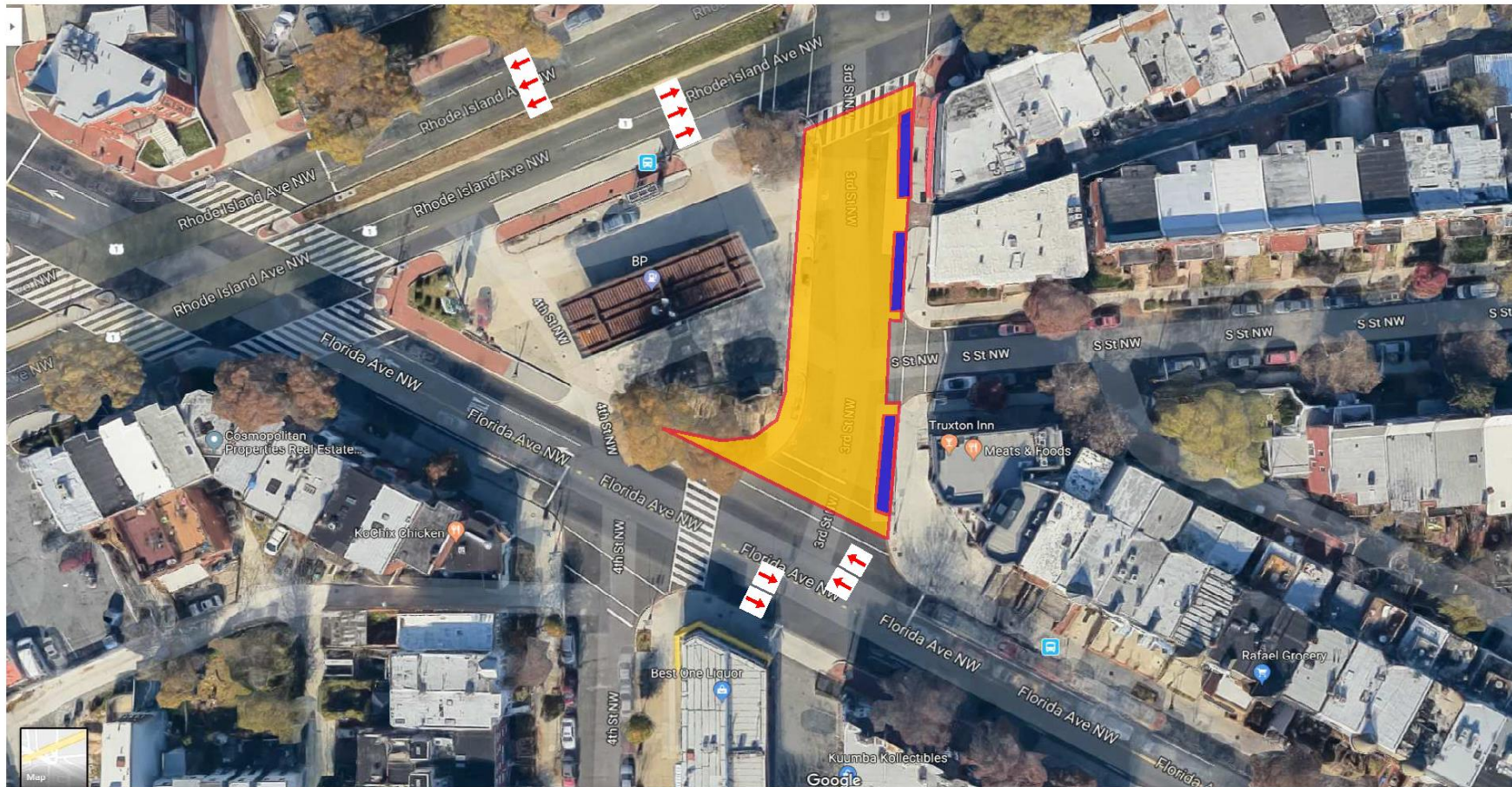
3rd Street NW Mobilization

Mobilization Work is expected to begin in April 2019.

FLORIDA AVENUE

MOT PHASE:	Phase 1 - Mobilization
DURATION:	Approximately 5 weeks
MAIN IMPACT:	3 rd Street Closed between Rhode Island Av. and Florida Av.

-  WORK ZONE
-  PARKING RESTRICTION
-  CHANNELIZING DEVICES



Travel Restrictions:

- *Duration—Until end of 2022.*
- Mobilizing the construction staging area requires closing the 1700 block of 3rd Street NW in both directions between Rhode Island Avenue NW and Florida Avenue NW.
- The 200 block of S Street NW will be accessible to traffic from 2nd Street NW only.
- The alley between the 200 blocks of Rhode Island Avenue NW and S Street NW will be closed at the 3rd Street entrance. The alley entrances from 2nd Street NW and S Street NW will remain open.

Trash Pickup:

DPW will use a narrow truck to pick up trash and will reverse to exit the alley between Rhode Island Avenue NW and S Street NW.

All construction dates are approximate and could change.

Florida Avenue NW Construction Site

Remove Portions of Sidewalk on Florida Avenue

Sidewalk Work is expected to begin in late April 2019.

FLORIDA AVENUE	
MOT PHASE:	Phase 2.A – Florida Avenue Sidewalk Removal
DURATION:	Approximately 2 weeks
MAIN IMPACT:	3 rd Street Closed between Rhode Island Av. and Florida Av. and 1 lane closed in Florida Av. Eastbound

-  WORK ZONE
-  PARKING RESTRICTION
-  CHANNELIZING DEVICES



A portion of the sidewalk on Florida Avenue near 4th Street NW will be removed to provide space for lane shifts. *Duration— approximately 2 weeks.*

Travel Restrictions:

- 3rd Street will be closed to traffic.
- One eastbound lane will be closed on Florida Avenue.

All construction dates are approximate and could change.

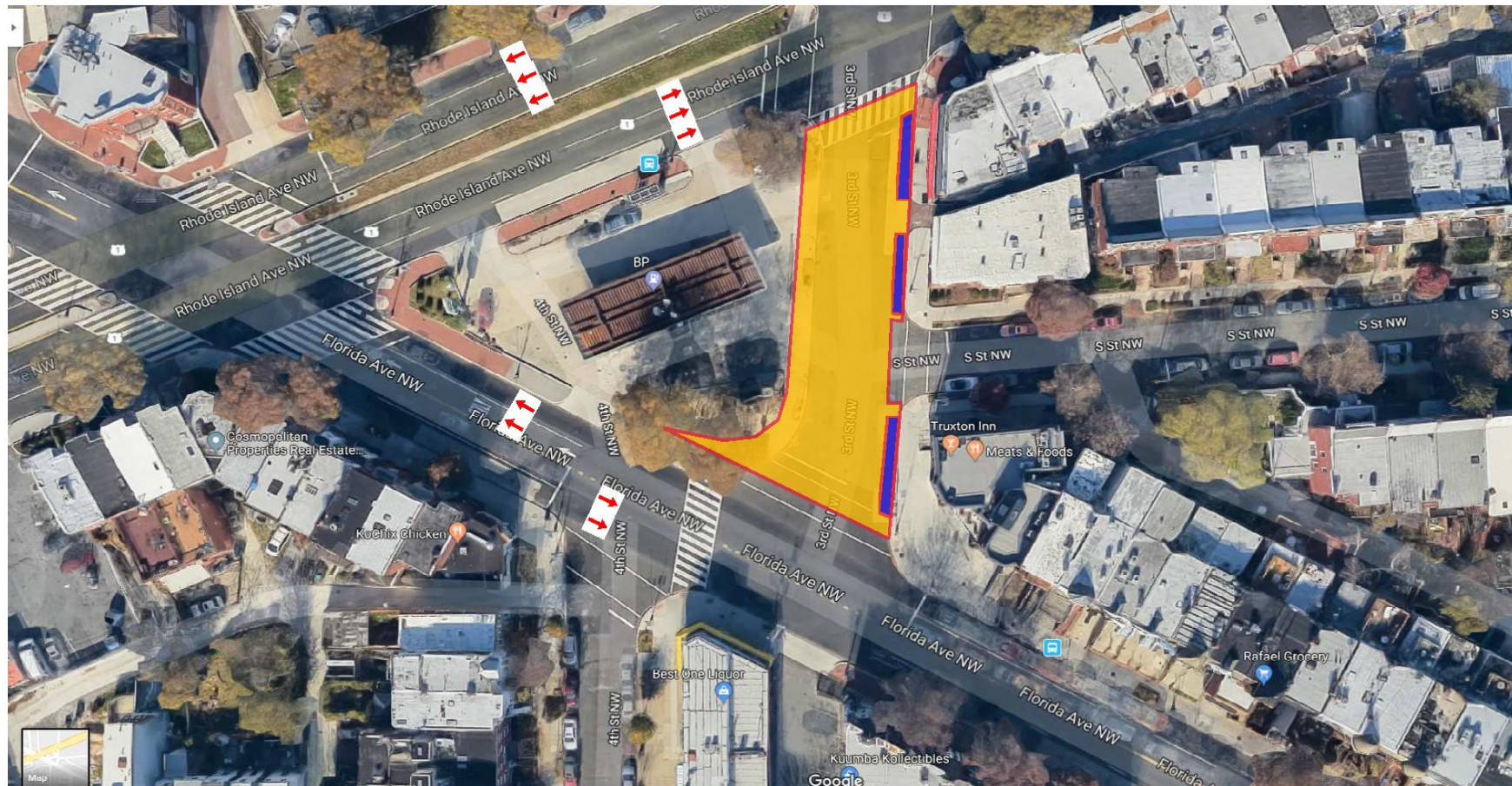
Florida Avenue NW Construction Site

Install Drop Shaft Secant Piles

Secant Pile Work is expected to begin in May 2019.

FLORIDA AVENUE	
MOT PHASE:	Phase 3 – Drop Shaft Secant Piles
DURATION:	Approximately 9 weeks
MAIN IMPACT:	One lane closure in 3 rd Street between Rhode Island Av. and Florida Av.

- WORK ZONE
- PARKING RESTRICTION
- CHANNELIZING DEVICES



Installation of secant piles work will take place on 3rd Street NW between Rhode Island Avenue NW and Florida Avenue NW. *Duration—approximately 9 weeks.*

Travel Restrictions:

- 3rd Street will be closed to traffic.

All construction dates are approximate and could change.

Florida Avenue NW Construction Site

Install Drop Shaft Secant Piles

Secant Pile Work is expected to begin in July 2019.

FLORIDA AVENUE	
MOT PHASE:	Phase 4 – Secant Piles for Near Surface Structures
DURATION:	Approximately 6 weeks
MAIN IMPACT:	3 rd Street Closed between Rhode Island Av. and Florida Av. and 2 lanes in Florida Av. Westbound Closed

- WORK ZONE
- PARKING RESTRICTION
- CHANNELIZING DEVICES

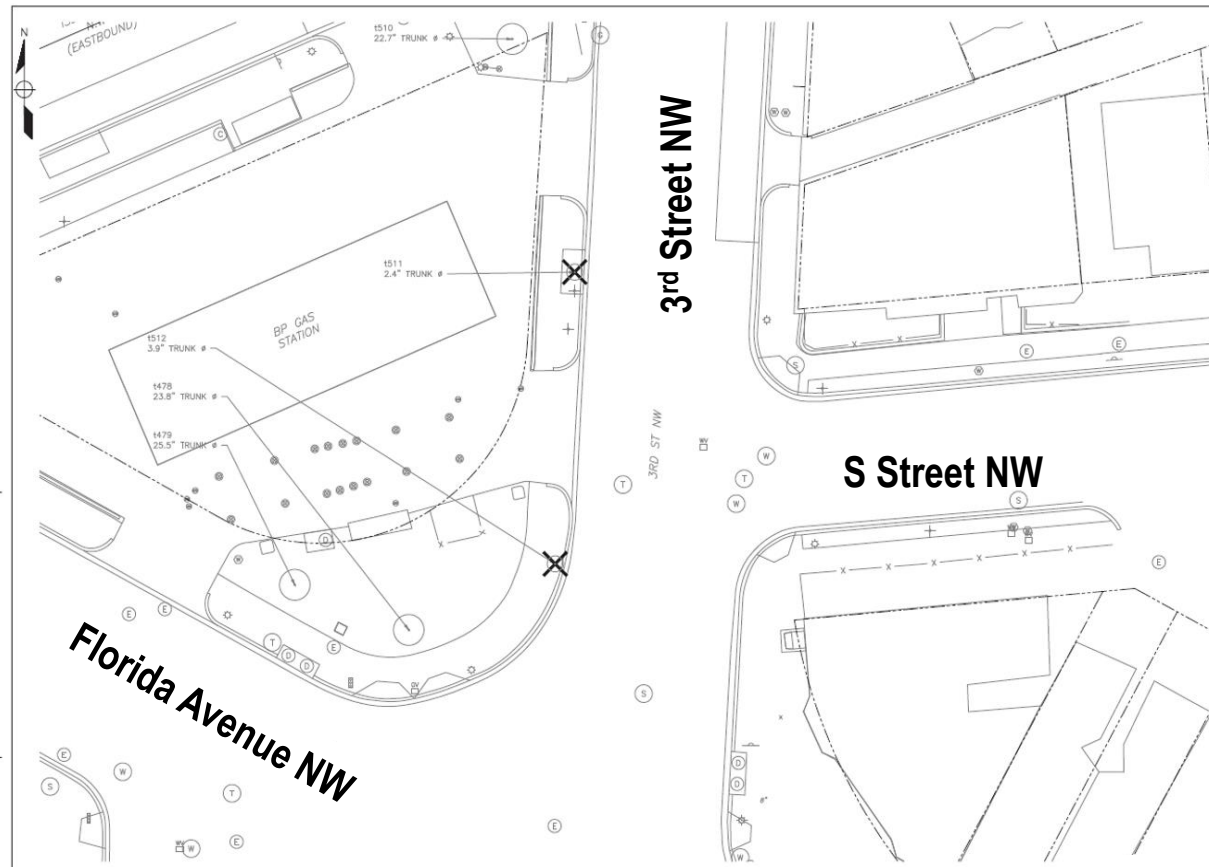


Installation of secant piles work will extend onto Florida Avenue NW. *Duration—approximately 6 weeks.*

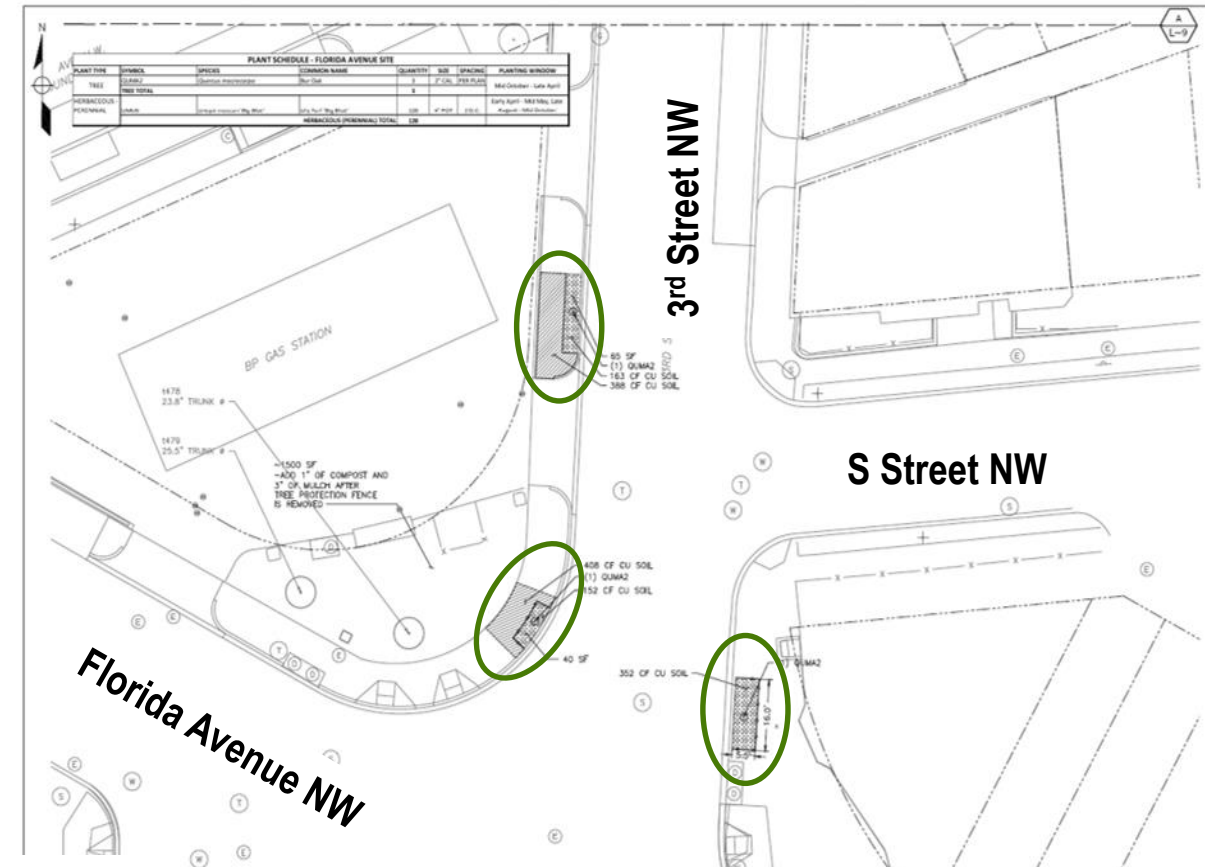
Travel Restrictions:

- 3rd Street will be closed to traffic.
- One lane in each direction will be open on Florida Avenue.

Florida Avenue NW Construction Site Tree Removal and Replanting Plan



X = Trees to be removed.



○ = Trees to be replanted.

Bur Oak



© Robert O'Brien

R Street NW Construction Site

Construction Site Work Sequencing Overview

R Street NW

- **Completed Utility Relocation**
- **MAY 2019 – DECEMBER 2019**
 - Mobilization at Cooper Gordon Park
 - Install Slurry Walls for R Street Drop Shaft Support of Excavation
 - Permeation Grouting
- **JANUARY 2020 – JUNE 2020**
 - Near Surface Structures, Shoring
 - Shaft Excavation
 - Install Concrete Final Line to Shaft
 - Remove Tunnel Boring Machine from Shaft



R Street NW
Construction Site

R Street NW Construction Site

Cooper Gordon Park Mobilization

R - STREET

MOT PHASE:	Phase 1 – Mobilization and Drop Shaft Slurry Wall Construction
DURATION:	Approximately 26 weeks
MAIN IMPACT:	One lane closure in Rhode Island Av Eastbound. Reducing and shifting 6 th Street NW and R-Street

-  WORK ZONE
-  PARKING RESTRICTION
-  CHANNELIZING DEVICES

Mobilization in the park includes setting up a fenced area around the perimeter of Cooper Gordon Park, removing park trees and park features, and setting up the site for construction. *Duration—approximately 26 weeks.*

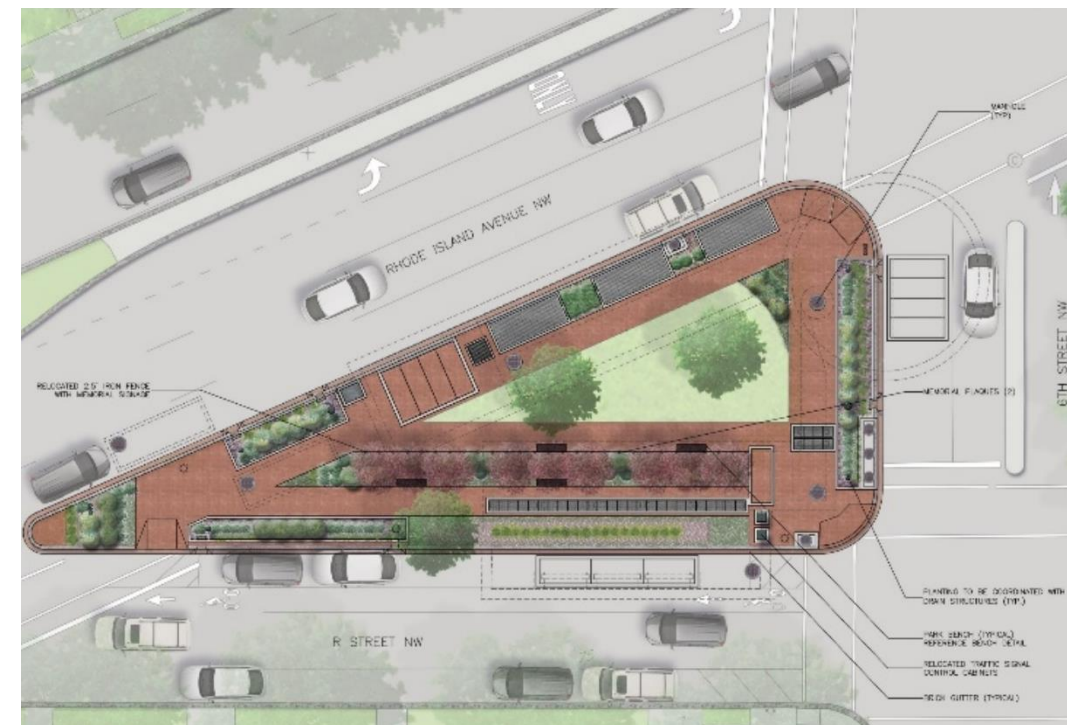
Travel Restrictions:

- One eastbound lane closed on Rhode Island Avenue NW.
- 6th Street NW between Rhode Island Avenue and R Street NW:
 - Southbound will be reduced to one lane.
 - Northbound will be two lanes, including a dedicated right turn lane.
- 600-block of R Street will maintain one lane for traffic and a bicycle lane.
- Parking restrictions along R Street between Marion Street and 5th Street NW, Rhode Island Avenue NW, and on 6th Street NW.



R Street NW Construction Site

Restoration Plan



Restoration Plan and
Renderings
of Cooper/Gordon Park

North Capitol Main Street Partnership

Service	Description
Business Impact Mitigation Assistance	<ul style="list-style-type: none">• Construction Impact Mitigation Plan• Wayfinding Signage and Beautification Plan• Needs Assistance and Health Check
Economic Vitality	<ul style="list-style-type: none">• Web, Social Media, and Mobil Delivery• Marketing and Branding• Negotiation Assistance
Design	<ul style="list-style-type: none">• Storefront Enhancement• Storefront Signage

North Capitol Main Street Contact Information

202-588-5340

northcapitoldc.com

Questions?

