

# Clean Rivers Project Northeast Boundary Tunnel (NEBT) Tunnel Forum Meeting

May 26, 2022

## Construction Sites

- Rhode Island Avenue NE
- 4<sup>th</sup> Street NE

# Greetings Neighbors!

## Welcome to the Tunnel Forum Virtual Meeting!



### Participation Tips:

- We are recording this Tunnel Forum. It will be posted on DC Water's YouTube site.
- Participants may opt to turn on or off your video.
- All participant lines are muted to minimize disruptions.
- The Questions and Answers (Q&A) period will be held at the end of the presentation. **Please hold your questions until the Q&A portion of the meeting.**
- During the Q&A period of the meeting, we will acknowledge questions from participants who are online and on phone.
- **ONLINE PARTICIPANTS:** send your questions to the Host by using the Chat mode. You may also click on "Participants" to raise your hand for a question.
- **PHONE PARTICIPANTS:** press \*9 to alert us that you want to ask a question. We will unmute you when it's your turn to ask a question.

# Agenda

1. Site Safety
2. Anacostia River Tunnel System
3. Responses to Recent Concerns
4. Construction Site Updates
  - Rhode Island Avenue NE
  - 4<sup>th</sup> Street NE
5. NEBT Claims Process
6. Main Streets Partnership
7. Outreach Team Contact Information

# Safety *(Alan Etter)*

Coronavirus restrictions have been lifted for most indoor and outdoor areas. Lane Construction abides by the latest DC Department of Health and DC Water guidance.

- Masks are optional but encouraged indoors
- Social distancing is optional but encouraged indoors
- Testing is made available if symptoms appear
- Constant monitoring of local and regional trends
- NEBT meetings will continue to be virtual

To inquire about the city's Coronavirus status, call [1-855-363-0333](tel:1-855-363-0333) or visit [coronavirus.dc.gov](https://coronavirus.dc.gov).

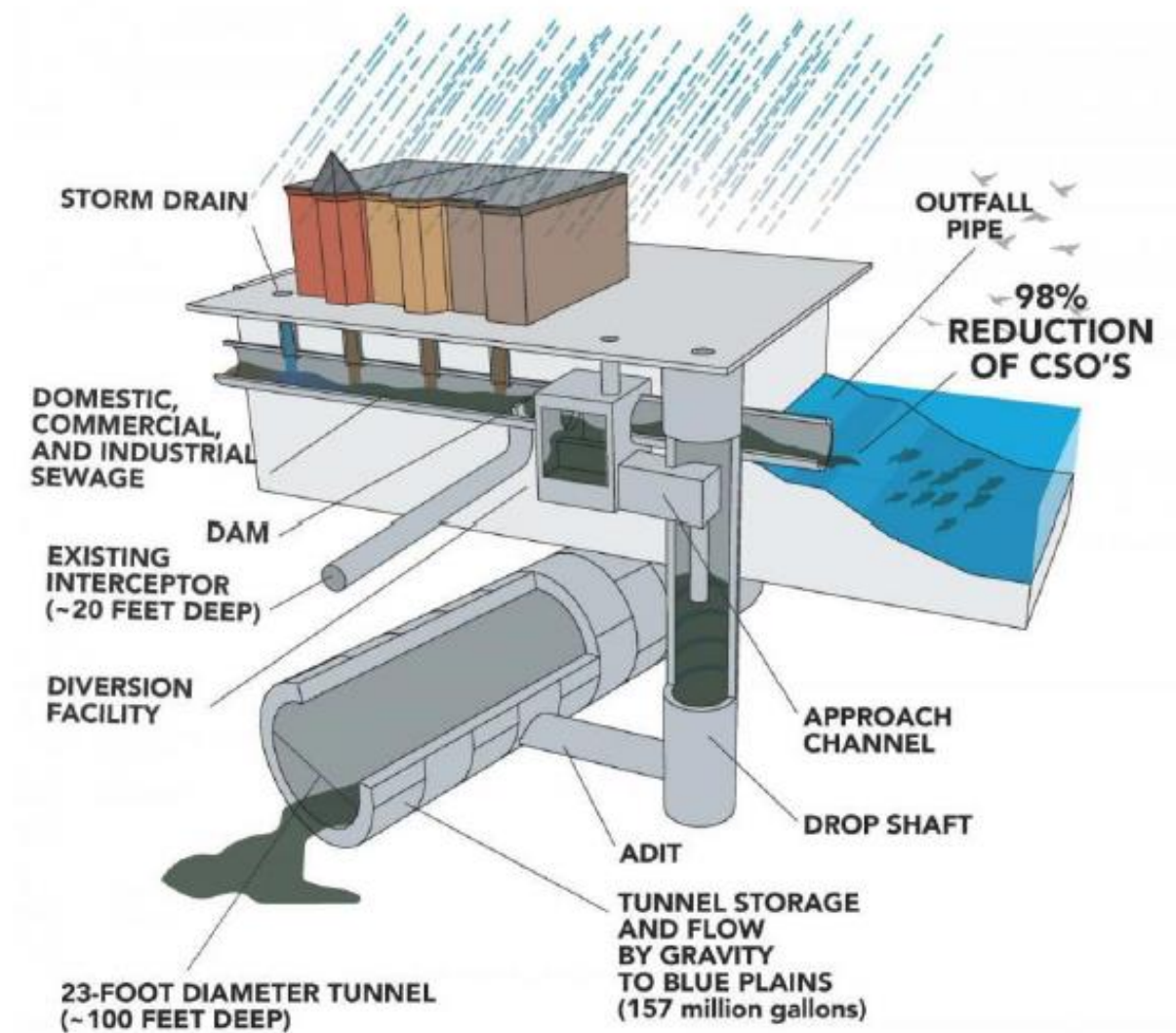
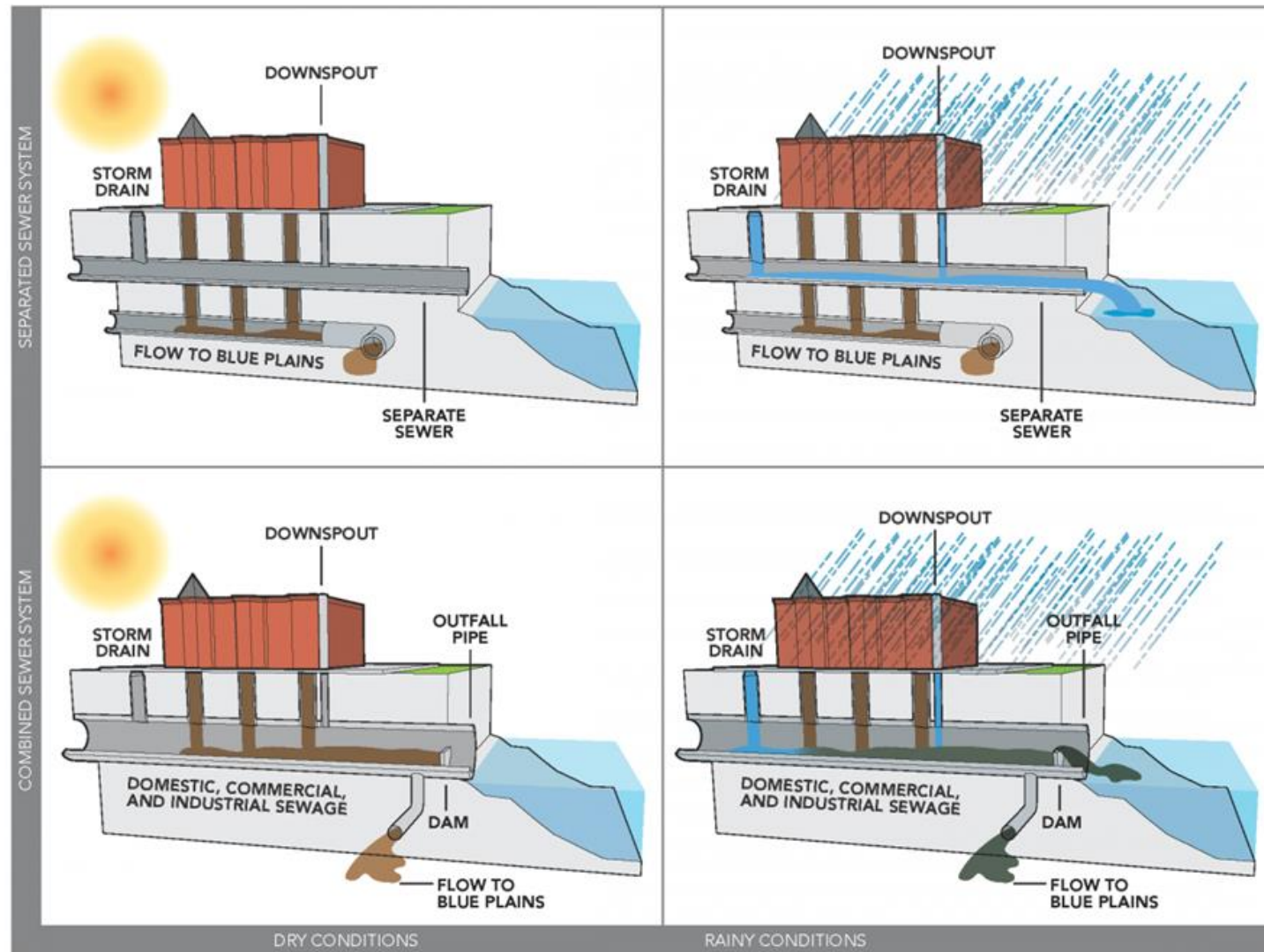
## Site Safety: Four Points

- Pay attention to all signs and stay on designated walking paths near and around active sites
- All construction equipment have the right of way—dump trucks, lowboys, forklifts, etc.
- Listen to the direction of site personnel while construction activities are going on around the site
- All construction entrances and exits must always remain clear of the public's vehicles or during work activities





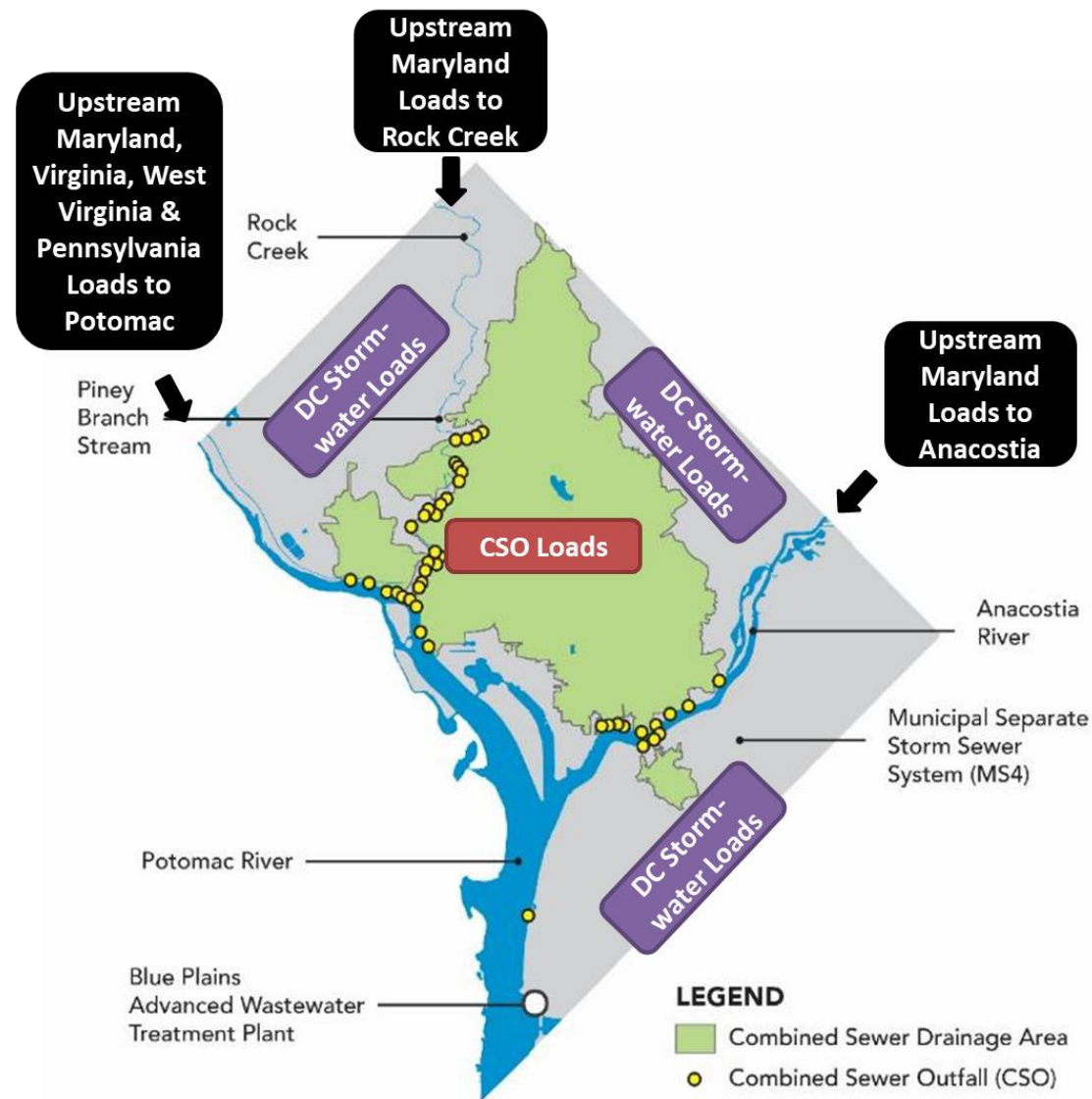
# The CSO Problem and the Solution: What are we constructing? *(Bill Levy)*



# DC Clean Rivers Project Background: Water Quality Benefits *(Bill Levy)*

## Anacostia River CSO System

- Over **13.3 billion** gallons captured to date
- Over **8,111 tons** of trash, debris, and other solids captured
- Exceeding predicted capture rate (90% > 80%)
- First year in operation was the wettest year on record for the District of Columbia



**Water Quality Standards**  
**Established by DOEE and EPA:**  
Anacostia, Potomac, and Rock Creek are all designated Class A waters (primary contact recreation)

**Pollution Sources**

- Combined sewer overflows (DC Water)
- Separate stormwater runoff (DOEE)
- Upstream loads (MD, VA, WV, PA)

**DC Clean Rivers Project**

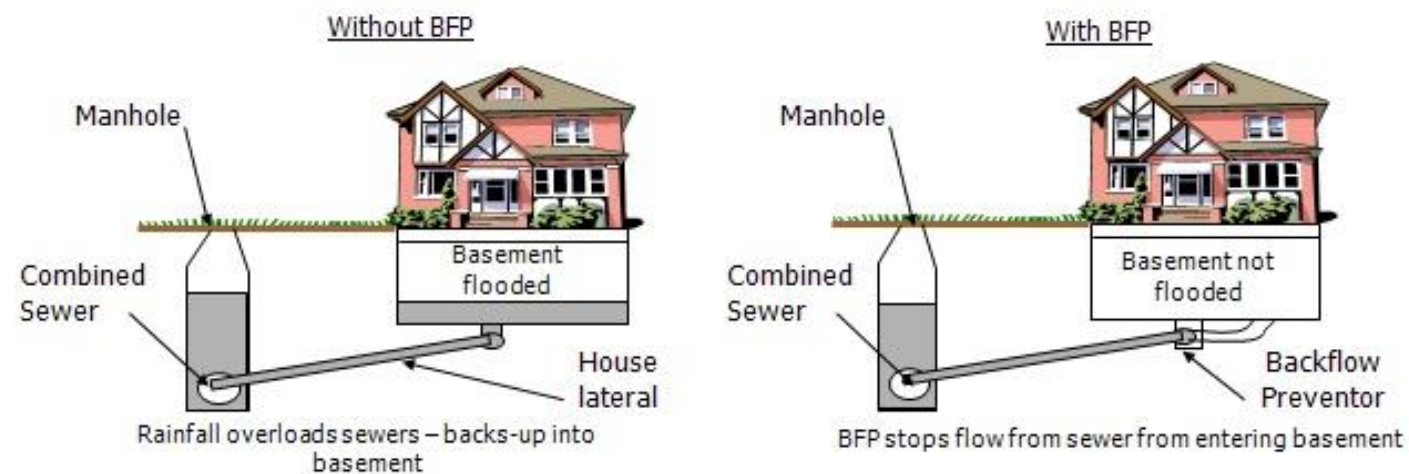
- Addresses CSOs as a pollution source
- Federally mandated by a consent decree (stipulated penalties)
- Determined by District Government and EPA to comply with Class A water quality standards

\* **CSO = Combined Sewer Overflows.**  
Learn more at [dcwater.com/css](http://dcwater.com/css)



# Backwater Valve Information and Rebate Program Application *(Bill Levy)*

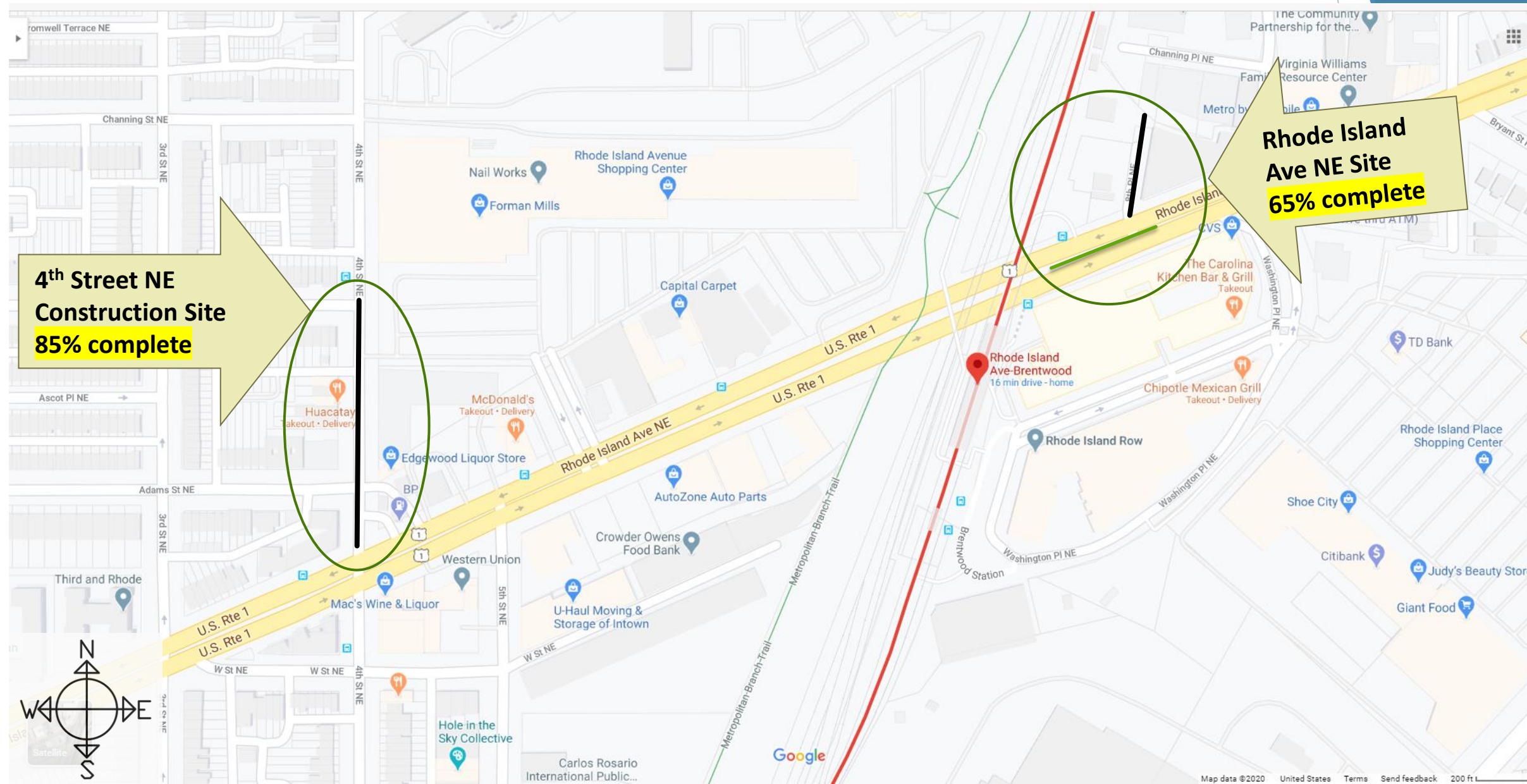
Backwater valves, also known as backflow prevention devices, are installed on a sewer lateral that connects the building to the public sewer in the street. A properly working backwater valve allows flow to go in only one direction (out), preventing wastewater from entering your building during surcharges of the public sewer system or back-ups caused by storms.



Please contact DC Water Community Outreach Manager: Emanuel Briggs (202) 787-2003, [emanuel.briggs@dcwater.com](mailto:emanuel.briggs@dcwater.com) for more information on the eligibility process and required documentation in support of the application.

# Construction Site Updates & Percent Complete

(Andrea Sesenna and Matt Wolniak)



— The black line = the Construction Site locations.



# 4th Street NE Construction Site

(Andrea Sesenna)

All construction dates are approximate and could change.

CONSTRUCTION WORK HOURS	
Monday – Friday	7:00 AM to 7:00 PM
Saturday	7:00 AM to 5:00 PM
Construction End Date	End of Summer 2022





# 4th Street NE Construction Site

*(Andrea Sesenna)*

## **Current Activities:**

All backfilling of the diversion chamber is complete. Road, curb, gutter and sidewalk restoration is ongoing with tentative completion set for mid to late June.

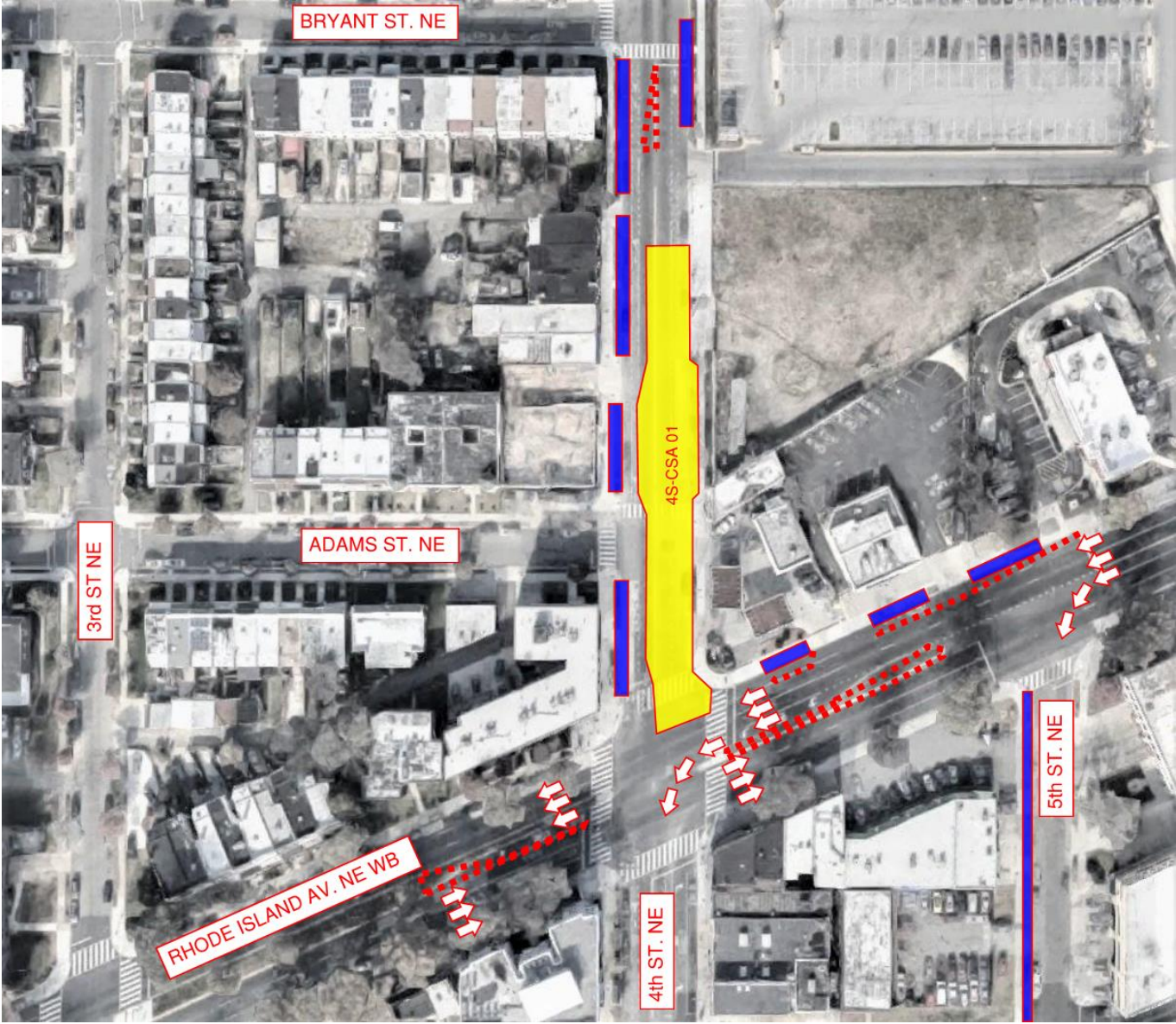
## **Future Work:**

A smaller construction site will be established at the corner of 4th & Adams Streets. Secant piles will be installed over the course of 2 ½ weeks to support construction of a ventilation vault. A catch basin will be constructed following completion of the ventilation vault. The area will be restored after this work, and the site should be completely restored by the end of Summer 2022.





# 4th Street NE Construction Site: Traffic Pattern *(Matt Wolniak)*



4 <sup>TH</sup> STREET NE CONSTRUCTION SITE	
TRAFFIC PATTERN:	The traffic pattern will change in the Summer of 2022.
MAIN IMPACT:	4 <sup>th</sup> Street NE is closed to northbound traffic between Rhode Island Avenue NE and Bryant Street NE.



# 4th Street NE Construction Site: Pedestrian Detour *(Matt Wolniak)*



- CONSTRUCTION WORK ZONE
- PARKING RESTRICTIONS
- MAINTENANCE OF TRAFFIC DEVICES  
(Cones, Jersey Barrier, etc..)
- Green Arrows = PEDESTRIAN DETOUR ROUTE

**4<sup>TH</sup> STREET NE CONSTRUCTION SITE – Pedestrian Detour**

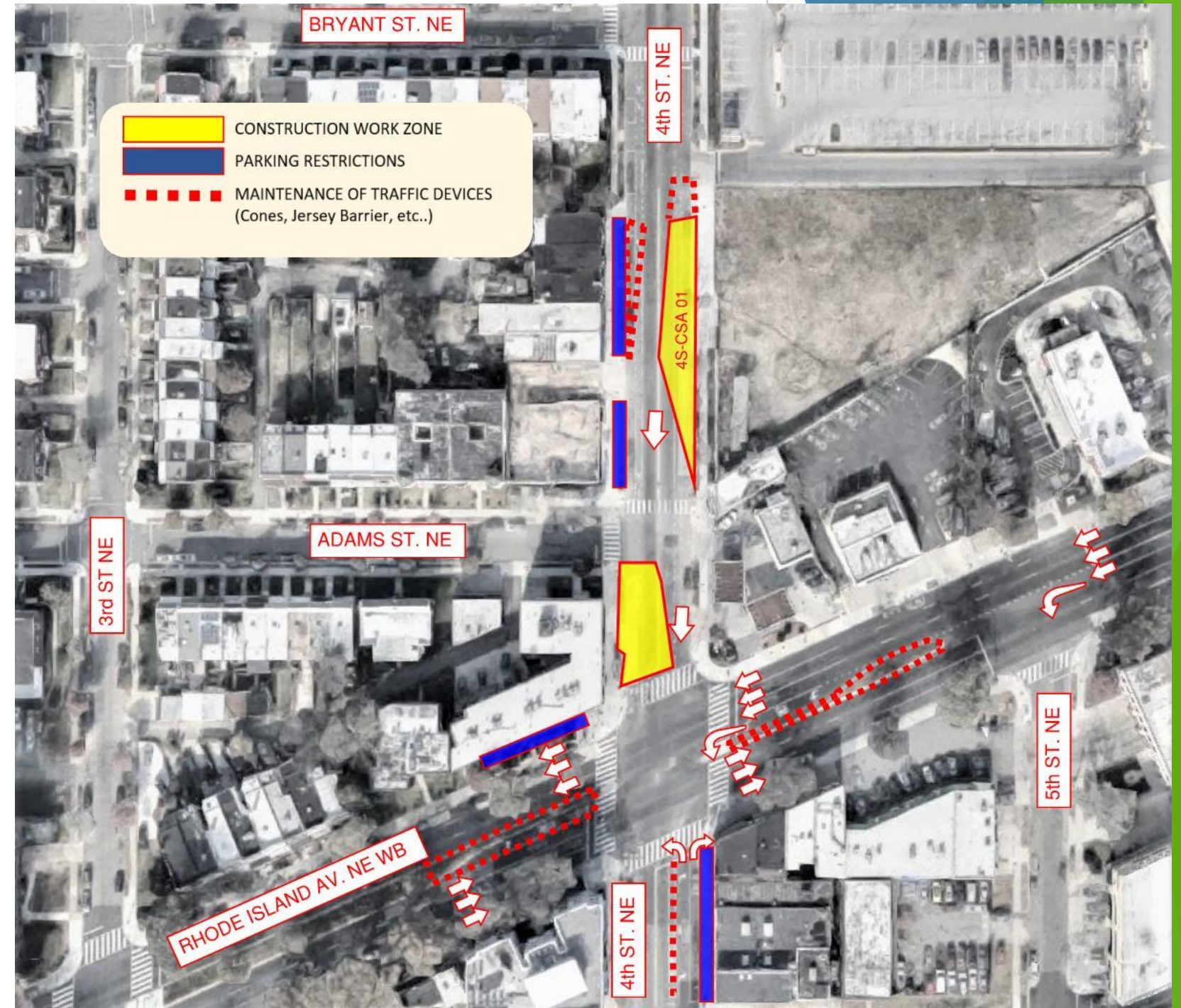
PEDESTRIAN DETOUR:	The pedestrian detour will continue.
MAIN IMPACT:	Pedestrian path provided around the construction site.



# 4th Street NE Construction Site: Traffic Pattern *(Matt Wolniak)*

## 4<sup>TH</sup> STREET NE CONSTRUCTION SITE

TRAFFIC PATTERN:	The traffic pattern will be implemented in summer of 2022.
MAIN IMPACT:	4 <sup>th</sup> Street NE is closed to northbound traffic between Rhode Island Avenue NE and Bryant Street NE. Other development projects on Rhode Island Avenue NE will impact the number of open westbound travel lanes.





# 4th Street NE Construction Site: Restoration Plan *(Bill Levy)*

## 4TH STREET NE



### PLANT LIST



Common Name:  
**Golden Rain Tree**  
Species:  
**Koelreuteria Paniculata**  
Symbol:  
**KOPA**



Common Name:  
**English Oak**  
Species:  
**Quercus Robur**  
Symbol:  
**QURO**



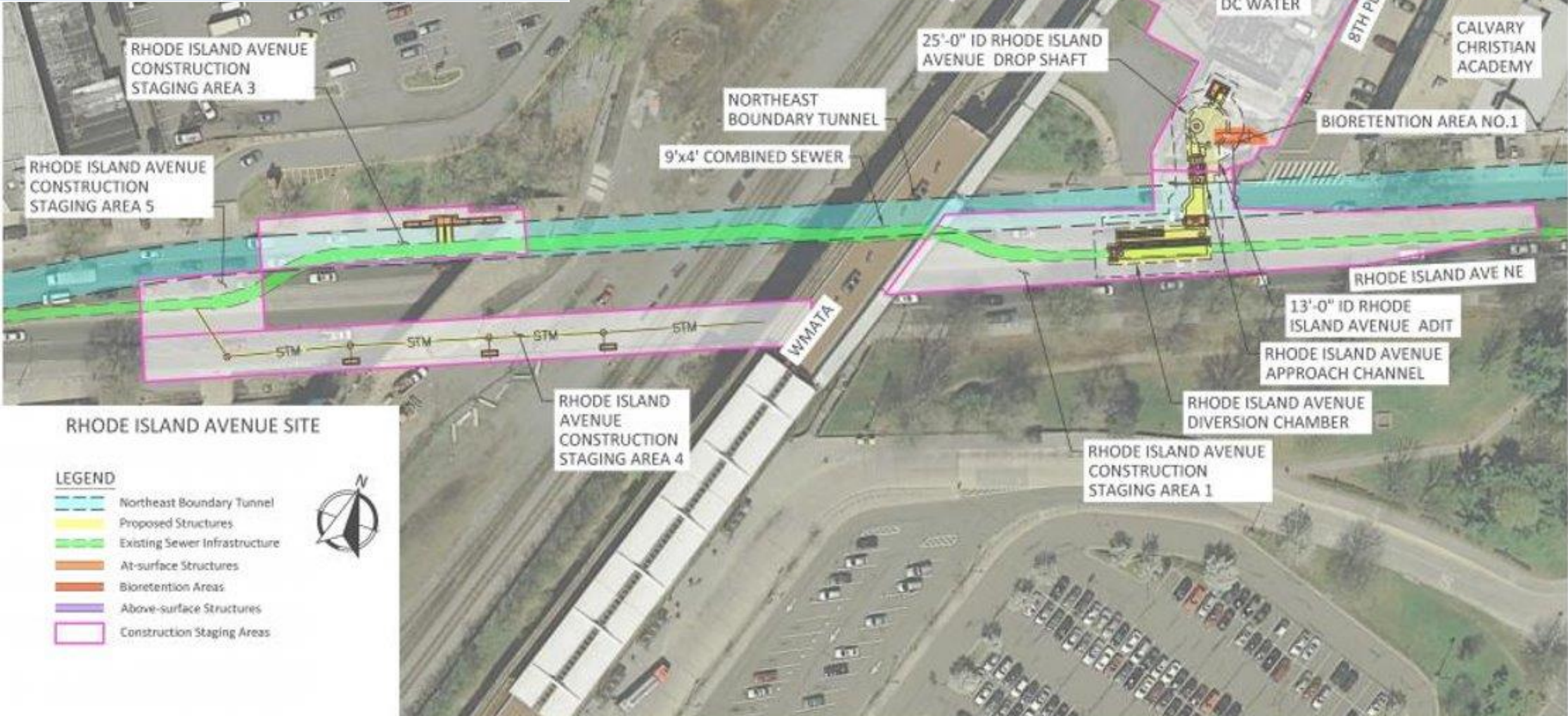


# Rhode Island Ave NE Construction Site

(Andrea Sesenna)

All construction dates are approximate and could change.

CONSTRUCTION WORK HOURS	
Monday - Friday	7:00 AM to 7:00 PM
Saturday (occasionally)	7:00 AM to 5:00 PM
Construction End Date	February 2023



- LEGEND**
- Northeast Boundary Tunnel
  - Proposed Structures
  - Existing Sewer Infrastructure
  - At-surface Structures
  - Bioretention Areas
  - Above-surface Structures
  - Construction Staging Areas



# Rhode Island Ave NE Construction Site

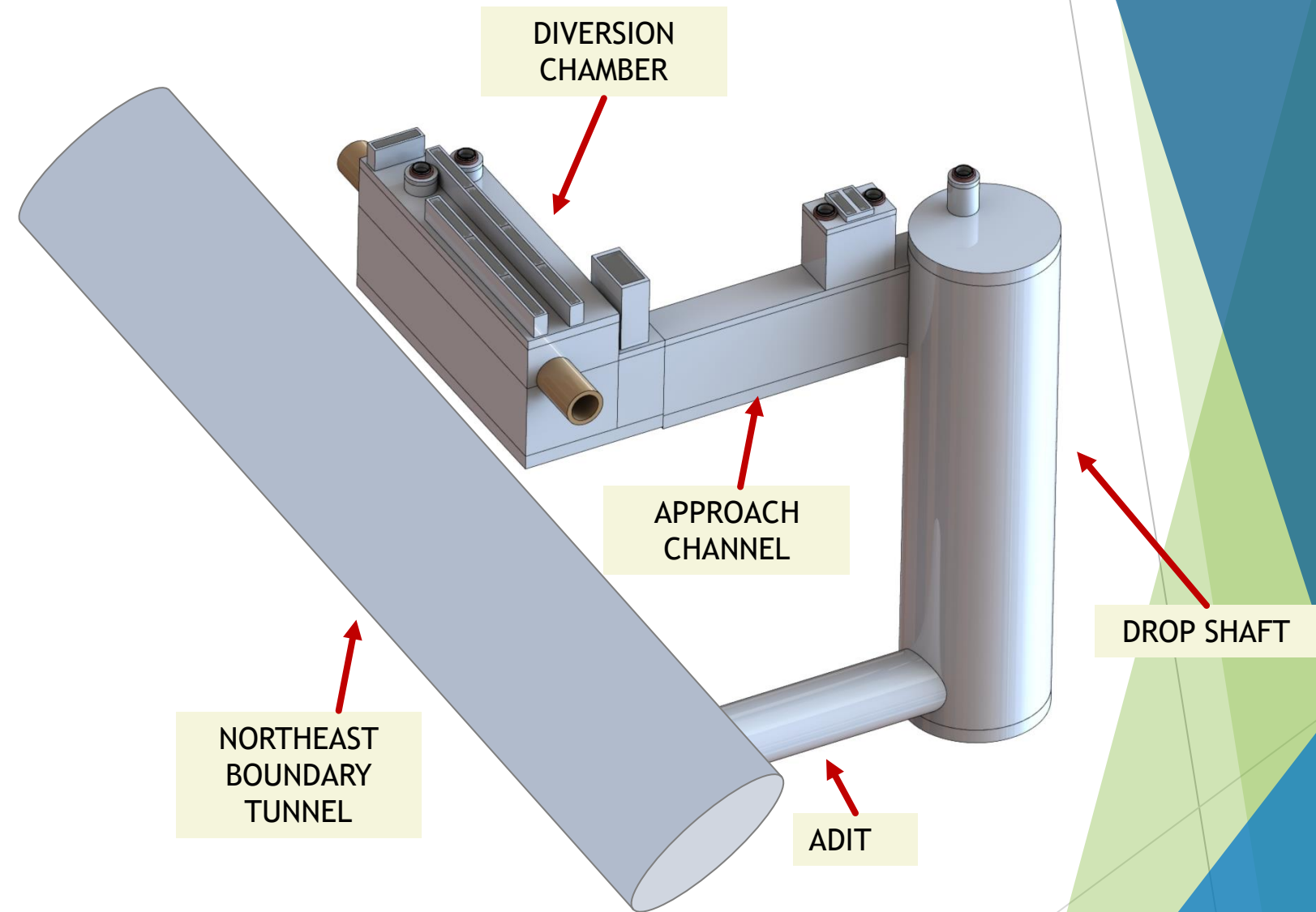
(Andrea Sesenna)

## Current Activities:

Excavation and concrete application for the diversion chamber are complete. The concrete liner for the adit, the hydraulic structure for the shaft, and the ventilation vault have all been completed. Construction of a 27" storm line and leak testing will be ongoing.

## Future Work:

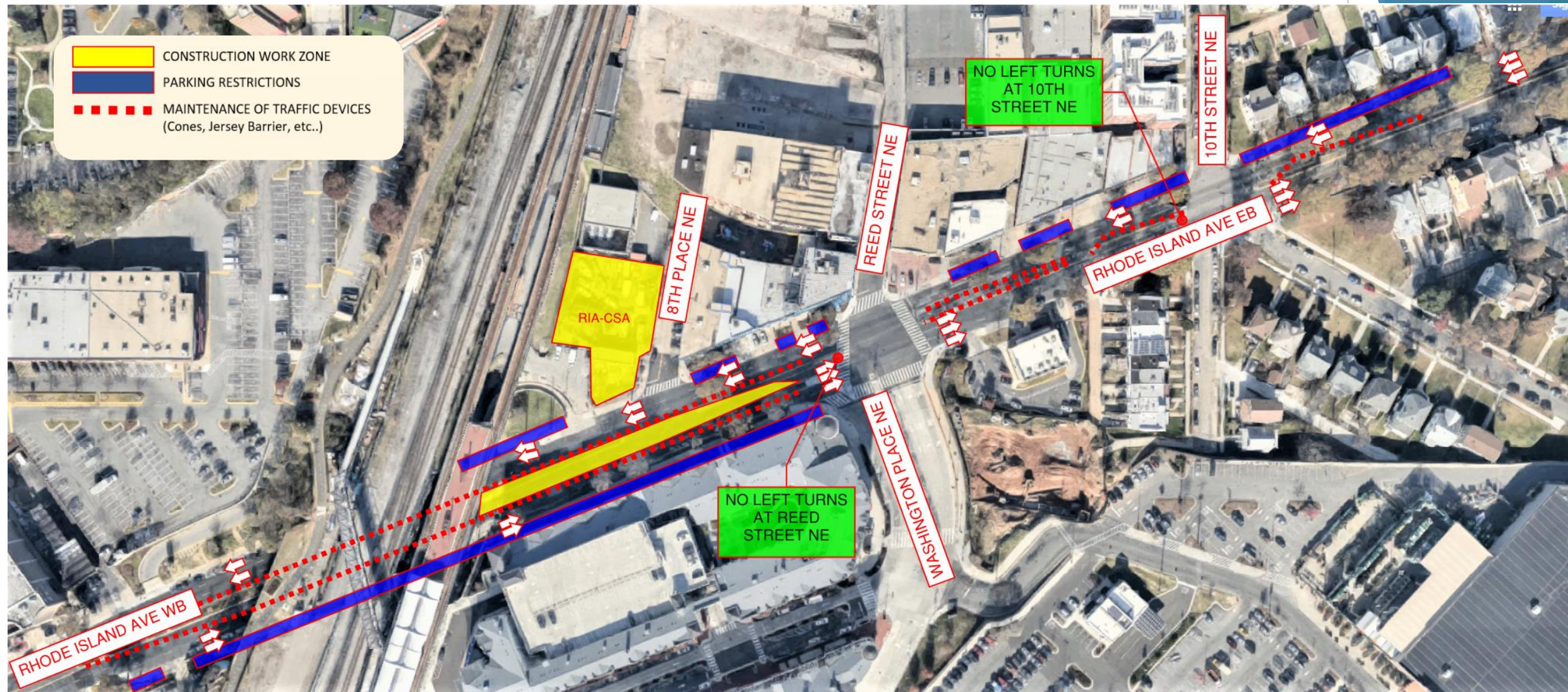
After the diversion chamber restoration is complete, the inlet excavation and approach channel work will begin. The tentative completion date for the site is early 2023.



Map of the diversion facility at the Rhode Island Ave NE Construction Site



# Rhode Island Ave NE Construction Site: Traffic Pattern *(Matt Wolniak)*

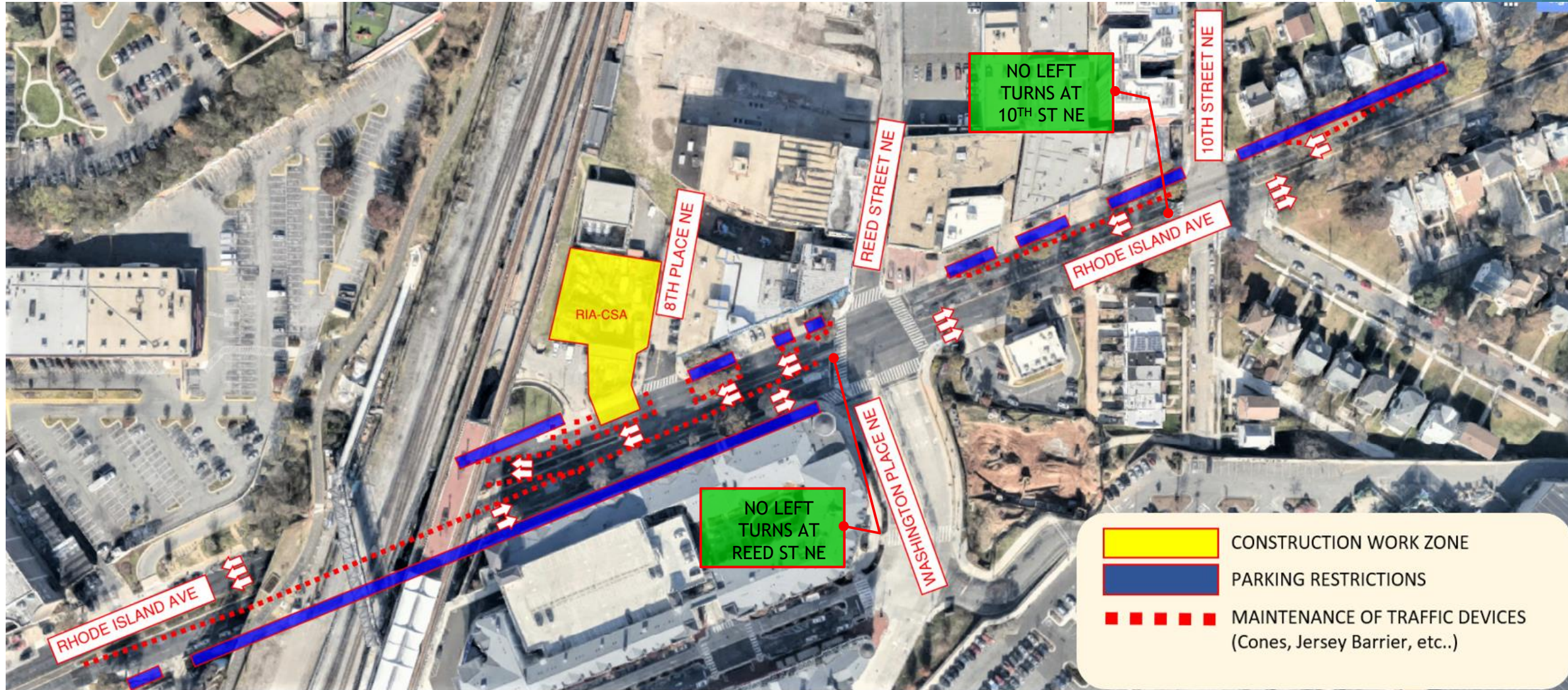


## RHODE ISLAND AVENUE NE CONSTRUCTION SITE

TRAFFIC PATTERN:	The traffic pattern on Rhode Island Avenue NE will change in the summer of 2022.
MAIN IMPACT:	Two lanes in each direction on Rhode Island Avenue NE are routed to go around the construction area in middle lanes. <b>No left turns permitted from eastbound Rhode Island Ave to Reed Street and 10<sup>th</sup> Street.</b>



# Rhode Island Ave NE Construction Site: Traffic Pattern *(Matt Wolniak)*



## RHODE ISLAND AVENUE NE CONSTRUCTION SITE

TRAFFIC PATTERN:

The traffic pattern will be implemented in the summer of 2022 and the 2 lanes in each direction will continue.

MAIN IMPACT:

**No left turns are permitted from eastbound Rhode Island Ave to Reed Street and 10<sup>th</sup> Street.**



# Green Infrastructure Technology: Typical Bioretention *(Bill Levy)*

## Physical Components

Inlet with Energy Dissipation  
(Downstream Outlet Not Shown)

Safety Fence

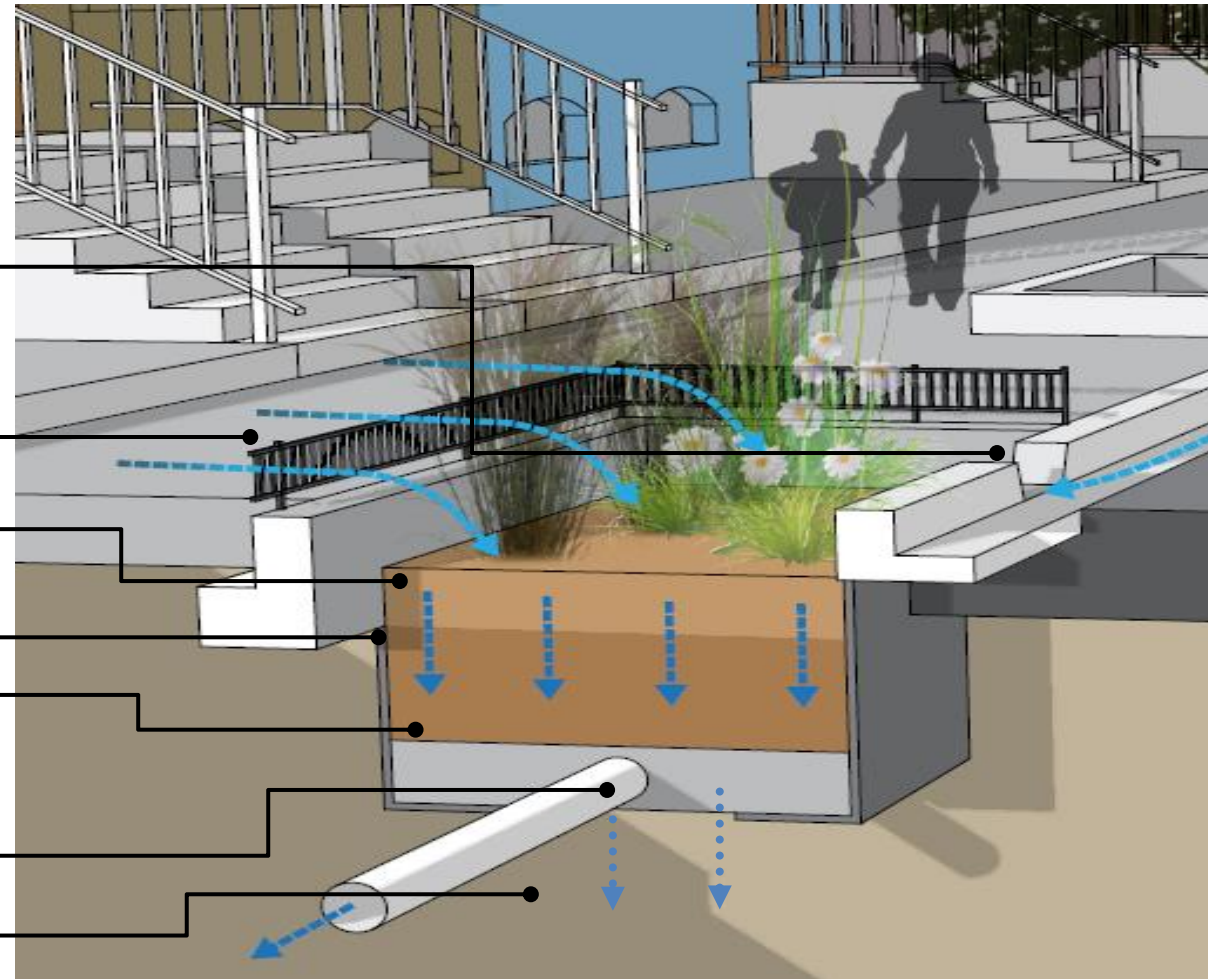
Bioretention Soil Media

Impermeable Liner

Choker Layer to Prevent  
BSM Migration

Aggregate Layer for Storage

Perforated Underdrain  
Connects to Solid Pipe to Sewer



**Planter Bioretention in Tree Planter**

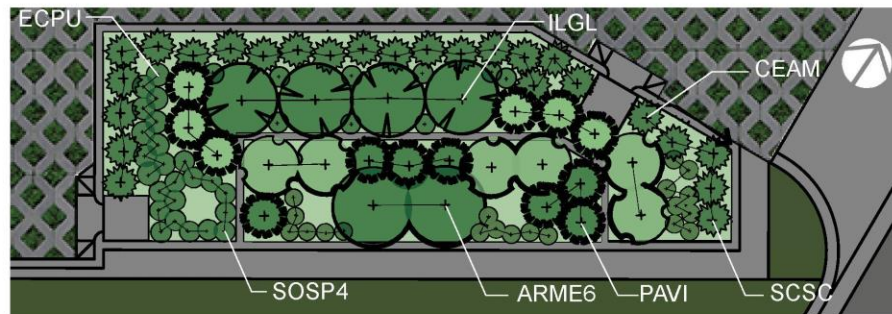
## Typical Sizing

- Approximate width: Width of planter strip and or parking lane (for curb extension bioretention)
- Approximate Depth: 5"
- Approximate Length: 20'-40'

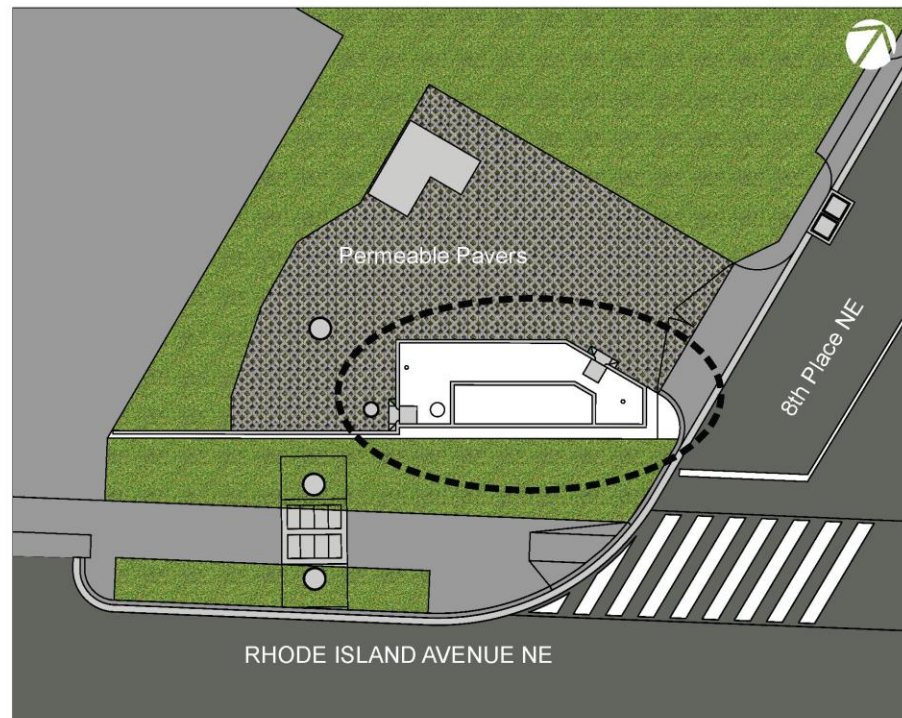


# Rhode Island Ave NE Construction Site: Restoration Plan *(Bill Levy)*

## RHODE ISLAND AVENUE NE



ENLARGED VIEW

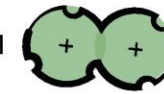


GENERAL VIEW

### PLANT LIST



Common Name:  
**New Jersey Tea**  
Species:  
**Ceanothus Americanus**  
Symbol:  
**CEAM**



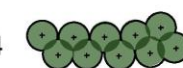
Common Name:  
**Purple Coneflower**  
Species:  
**Echinacea Purpurea**  
Symbol:  
**ECPU**



Common Name:  
**Inkberry, Compacta**  
Species:  
**Ilex Glabra 'Compacta'**  
Symbol:  
**ILGL**



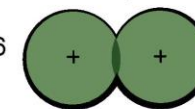
Common Name:  
**Goldenrod 'Golden Fleece'**  
Species:  
**Solidago Sphacelata**  
Symbol:  
**SOSP4**



Common Name:  
**Cheyenne Sky**  
Species:  
**Panicumvirgatum Cheyennesky**  
Symbol:  
**PAVI**



Common Name:  
**Black Chokeberry 'Morton'**  
Species:  
**Aronia Melanocarpa 'Morton'**  
Symbol:  
**ARME6**



Common Name:  
**Little Bluestem 'MinnblueA'**  
Species:  
**Schizachyrium Scoparium 'MinnblueA'**  
Symbol:  
**SCSC**



# NEBT Claims Process *(Hadiah Jordan)*

- If you are a property owner and you believe that construction activities undertaken as a result of this project have damaged your property in some way, you may send an email to [dccleanrivers@dcwater.com](mailto:dccleanrivers@dcwater.com) or call the Hotline at 800-988-6151.
- A representative of the contractor, SIH, will contact you to receive the information for the claim. A claim will be initiated on your behalf and a copy will be transmitted to you. Further communications about the claim will occur between the property owner and DC Water's insurance company.
- The claim receives a claim number, and an adjuster investigates.
- It is recommended that when you see damage, report it.



# Rhode Island Avenue NE Main Street

*(Bill Levy)*

**Michaela Blanchard, Executive Director**

[ed@friendsofria.org](mailto:ed@friendsofria.org)

202-808-9050

[riainmainstreet.org](http://riainmainstreet.org)

Office Location

2300 Rhode Island Avenue NE, Suite 202



# NEBT Contact Information



- Send your questions to:  
[dccleanrivers@dcwater.com](mailto:dccleanrivers@dcwater.com)
- Call our 24/7 NEBT Hotline:  
(800) 988-6151
- Visit the NEBT Website:  
[dcwater.com/NEBT](http://dcwater.com/NEBT)
- To receive e-newsletters send your email to [dccleanrivers@dcwater.com](mailto:dccleanrivers@dcwater.com)





We will acknowledge questions from participants who are online and on the phone.

- **ONLINE PARTICIPANTS:** send your questions to the Host by using the Chat mode. You may also click on “Participants” to raise your hand for a question.
- **PHONE PARTICIPANTS:** press \*9 to alert us that you want to ask a question. We will unmute you when it’s your turn to ask a question.