

FIELD INVESTIGATIONS, SURVEYS, AND INSPECTIONS

NOTICE OF SANITARY SEWER FIELD WORK

(National Park Service – Glover Archbold Park)

DC Water’s Contractors will be conducting field investigations, surveys, and routine inspections of the sanitary sewer and manholes in this park. These efforts will help to identify existing site conditions and environmental resources to support analyses, permitting, and design for future maintenance-related activities for the sanitary sewer system in this area. General site walks and observations will be performed near the assets. Additionally, the following activities generally will be performed within 100 feet of sewer infrastructure; however, they may extend beyond 100 feet as necessary (see **Figure 1** and attached).

- Tree survey
- Threatened and endangered species habitat identification
- Reconnaissance of stream reaches
- Phase IA cultural resources reconnaissance
- Manhole inspections
- Topographic survey and non-intrusive subsurface utility designations
- Stream geomorphic assessment
- Manhole excavations to locate buried manholes

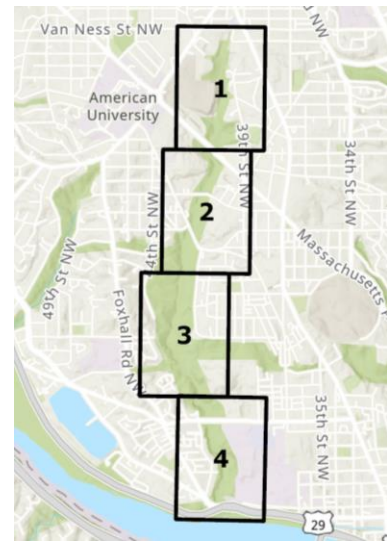


Figure 1. Study Area Index Map

Please see schedule, potential traffic impacts, and other important information below:

SCHEDULE

- Estimated start: November 2024
- Estimated completion: March 2026
- Normal work hours: 8:00 a.m. – 5:00 p.m., Monday through Friday

IMPORTANT INFORMATION

- The activities will not involve any mechanized equipment.
- All activities will be performed in accordance with conditions of the existing Blanket Permit with the exception of authorization from NPS to perform some activities beyond 100 feet of sewer infrastructure as necessary.
- Streambed material sampled on site via a sieve analysis will be returned in place.
- All equipment is portable and will be removed from the site daily.

TRAFFIC

- The activities will not significantly impact traffic in the area.

We apologize for any inconvenience and thank you in advance for your cooperation.

FOR MORE INFORMATION, PLEASE CONTACT:

DC Water Project Manager: Peter Kelley (202) 787-2540 / peter.kelley@dcwater.com

DC Water 24-hr Emergency/Command Center: (202) 612-3400

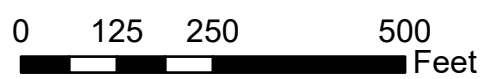
DC Water Office of Marketing and Communications (202) 787-2200



Legend

- Manholes
- Combined Storm/Wastewater
- Sanitary
- Storm
- Cross Connection
- 200-ft Buffer
- National Parks

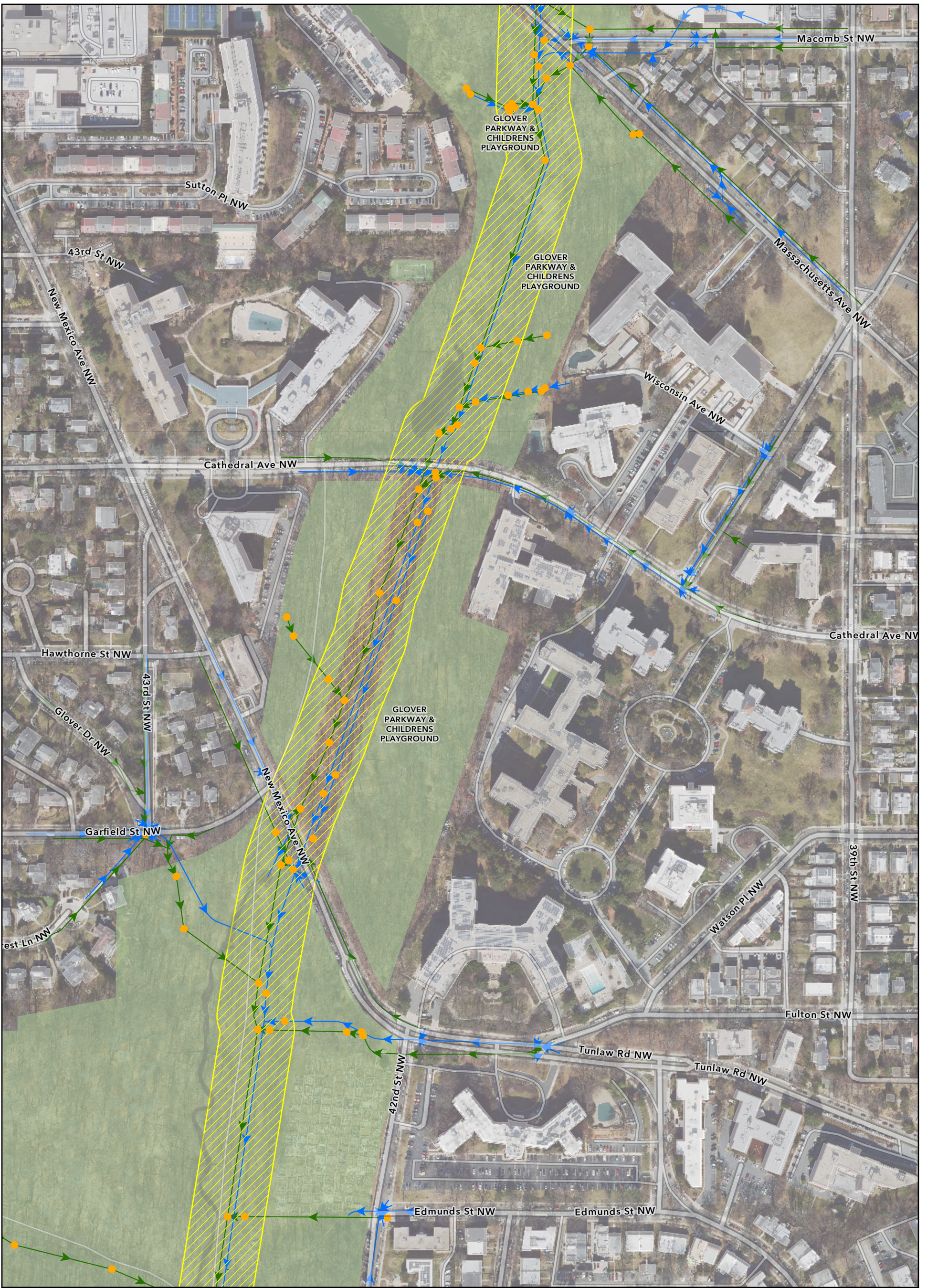
Glover Archbold Park Study Area Map



Map 1 of 4



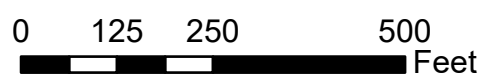
Scale: 1:3,000
 Created By: MDC
 Source: ESRI, DC Water, DCOCTO



Legend

- Manholes
- Combined Storm/Wastewater
- Sanitary
- Storm
- Cross Connection
- 200-ft Buffer
- National Parks

**Glover Archbold Park
Study Area Map**



Map 2 of 4



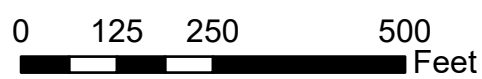
Scale: 1:3,000
Created By: MDC
Source: ESRI, DC Water, DCOCTO



Legend

- Manholes
- Combined Storm/Wastewater
- Sanitary
- Storm
- Cross Connection
- 200-ft Buffer
- National Parks

**Glover Archbold Park
Study Area Map**



Map 3 of 4



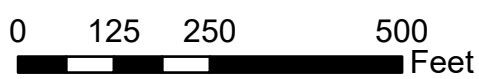
Scale: 1:3,000
Created By: MDC
Source: ESRI, DC Water, DCOCTO



Legend

- Manholes
- Combined Storm/Wastewater
- Sanitary
- Storm
- Cross Connection
- 200-ft Buffer
- National Parks

**Glover Archbold Park
Study Area Map**



Map 4 of 4



Scale: 1:3,000
Created By: MDC
Source: ESRI, DC Water, DCOCTO