

Sewer System Evaluation Study (SSES) – Phase II Northeast Area Woodridge Area 1

OVERVIEW

DC Water will be assessing the sanitary sewer lines, manholes, and other features that may be related to flow in sewers in Woodridge Area, NE. This initiative will help us understand the root causes for storm related backups in the separate sewer system in this neighborhood. Unlike a third of the City that combines storm and sewage in the same pipe, storm pipes and sewage pipes were constructed in this area to separate them. The flooding that the residents experienced during the September 10th 2020 storm, is an indication that there are unintended pathways for storm water to enter the sewer resulting in the backups that the residents experienced. The study is the first step in the process to identify pathways for rainwater to enter the sewer, so that solutions can be engineered to address them. The project area is defined in the map on the back. Work that is currently scheduled to be completed in the field is described below.

SCOPE OF WORK

- **Manhole Inspections** – The condition of each manhole will be assessed for needed repair to eliminate routes for large volume of rainwater entry.
- **Closed Circuit Television (CCTV) Inspection** – CCTV inspection of select sewer pipes will be performed by a robotic camera to evaluate whether there is a cross connection with storm sewer or another entry point that is allowing water to enter the sewers.
- **Smoke Testing** – NON-TOXIC, non-staining, white smoke will be blown into the sanitary sewer system during dry weather conditions to verify if there are cross connections with the storm sewers or any other pathways for allowing rainwater to enter the sewers that are not easily detectable above ground.
- **Dyed-Water Testing** – Following smoke testing, if the stormwater entry locations cannot be pinpointed, a non-toxic, water-soluble green dye will be used to help track and/or confirm the connections.

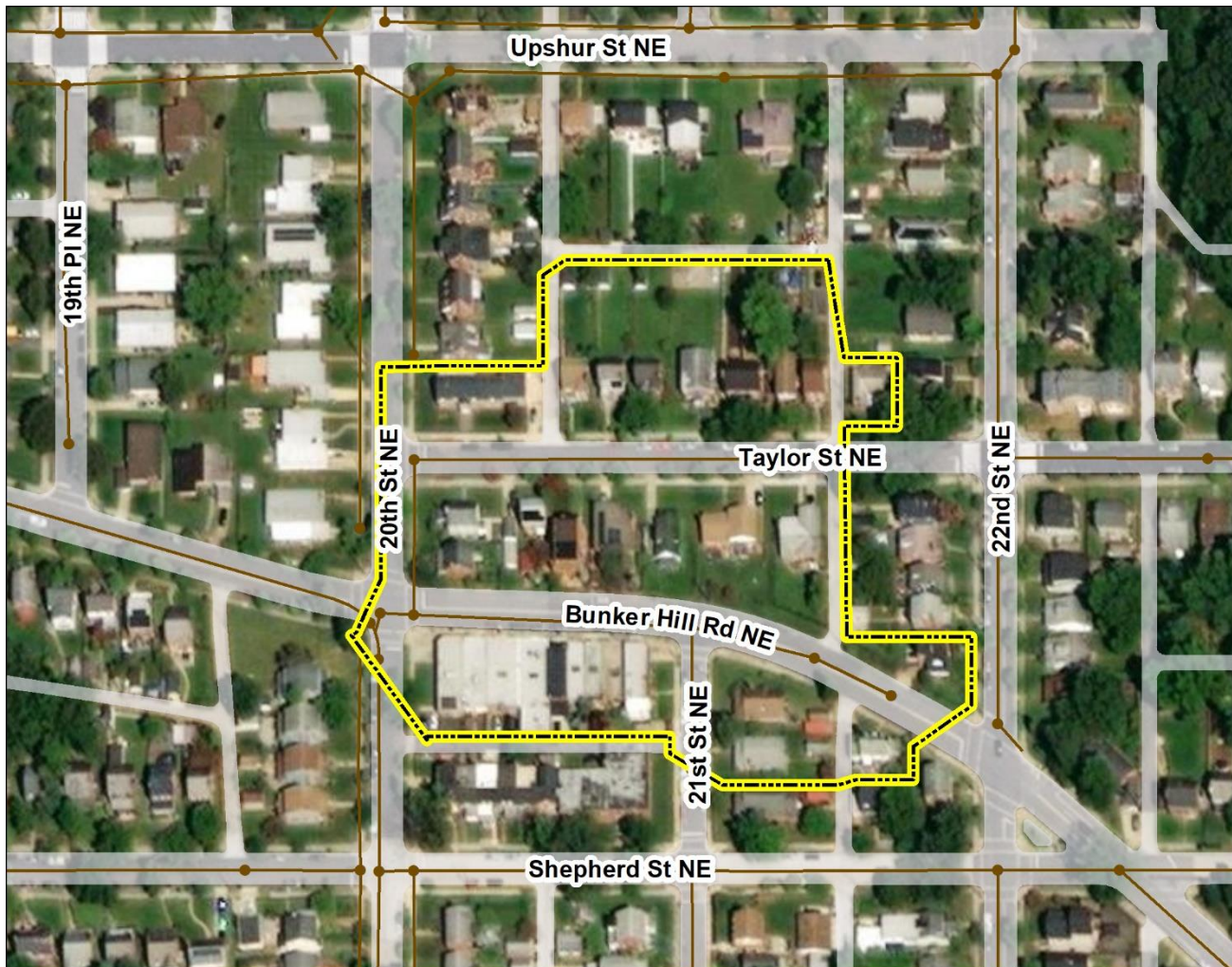
SCHEDULE

- Estimated Manhole Inspection start: August 2021
Lateral Inspections in Public Space (weather dependent) start: August 2021
- Estimated CCTV Inspection start: August/September 2021
- Estimated Smoke Testing start: August 2021 (**Public Notice will be given prior to testing**)
- Estimated Dye Testing start: August/September 2021
- Normal work hours: Monday – Saturday, 8:00am – 5:00pm
- The schedule for field work is highly dependent on weather. For example, smoke testing will **not** be performed within 24 hours after a rain event.
- Estimated completion of all field work: September 2021

IMPORTANT INFORMATION

- CCTV inspections of the sewer will access the sewer through manholes. These, as well as manhole inspections and stormwater inspections, may necessitate the partial or complete closure of local roads, and may affect access or parking in the area. Notice will be given in advance of any needed closures or other prohibited access. Ideally, street closures will occur during the day and most likely will be for a block or two at a time, for a few hours.
- CCTV inspections will be mostly done during the day. If significant flow is observed during the day, CCTV inspections may be done at night when flows are lower.
- Door hanger notifications will be distributed 2 to 5 business days in advance of smoke and dyed-water testing in your area. More information and instructions will be included on the door hangers.

Sewer System Evaluation Study (SSES) – Phase II Northeast Area
Woodridge Area 1



FOR MORE INFORMATION, PLEASE CONTACT:

DC Water Project Community Liaison: Emanuel Briggs (202) 787-2003, emanuel.briggs@dcwater.com

DC Water Project Manager: M. Ella Garcia, PE (202) 787-2465, mariaella.garcia@dcwater.com

DC Water Project Contractor: Carlos Cuneo (301) 479-1252, ccuneo@brwncald.com

DC Water Smoke Testing Hotline: (703) 340-1077

DC Water 24-hr Emergency/Command Center: (202) 612-3400

DC Water Office of Marketing and Communications: (202) 787-2200